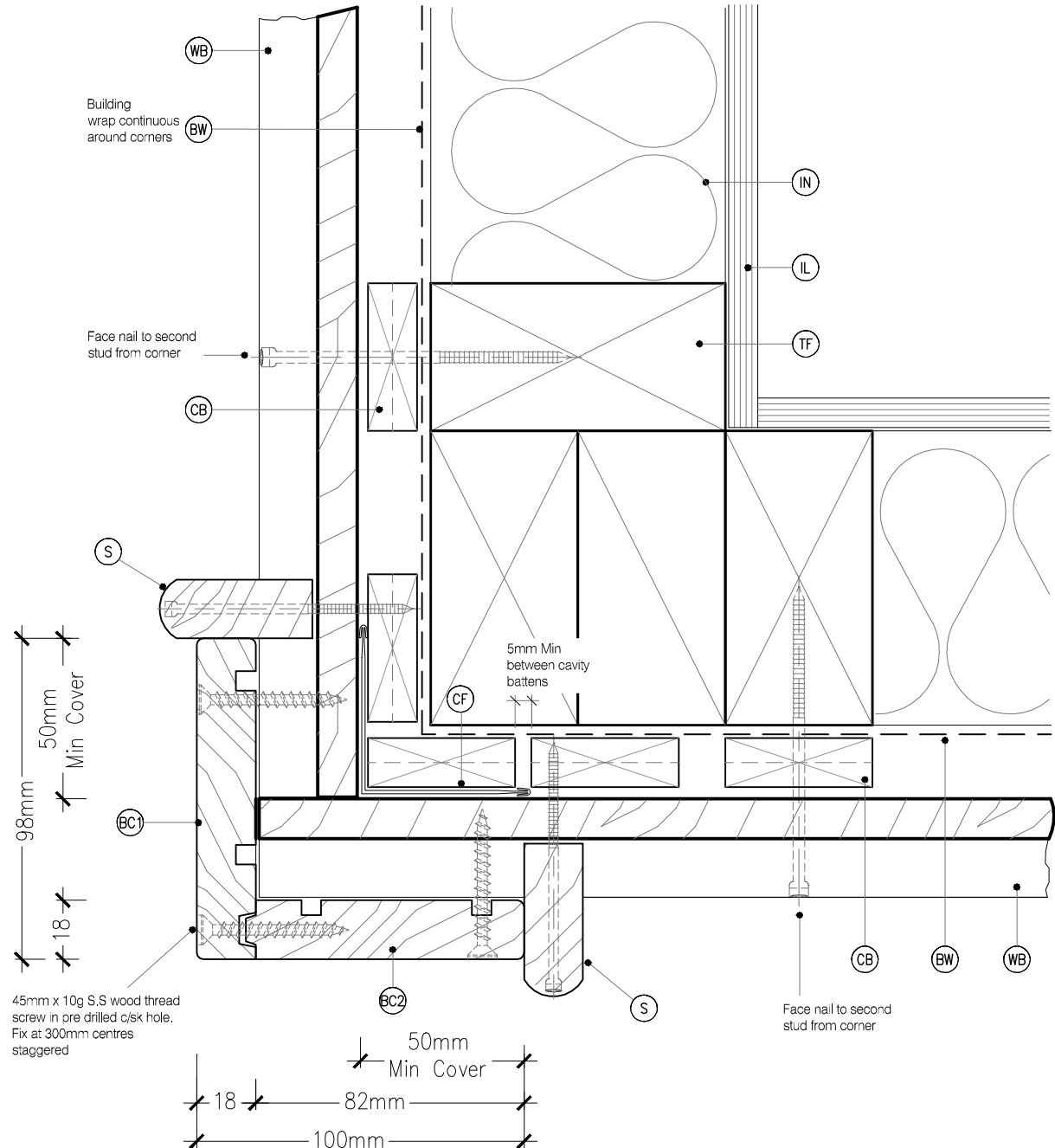


LEGEND :

PEF PEF ROD BACKING: Foam backing rod with sealant to perimeter that forms a waterproof air-seal. (Sealant 2:1 Ratio)	FT3 FLEXIBLE FLASHING TAPE: Flexible flashing tape lapped into corner, Refer NZBC E2/AS1 4.3.11	CF CORNER FLASHING: Aluminium, PVC or Stainless Steel corner flashing. Refer NZBC E2/AS1 4.3 50x50 Hem or Hook to Flashing Edges 75x75 NO. Hem or Hook Required EXTRA HIGH WIND ZONE 100x100 Hem or Hook to Flashing Edges, Refer NZBC E2/AS1 4.5.1
CB CAVITY BATTEN: 45x20 KLC Generation II, MicroPro H3.2 FJ Cavity Batten to form a 20mm cavity	FT4 FLEXIBLE FLASHING TAPE: Flexible flashing tape wrapped around pipe and over building wrap, Refer NZBC E2/AS1 4.3.11 & Figure 68	S SCRIBER: KLC Generation II, MicroPro H3.2 (10mm wide min) profile cut to fit weatherboard, sealant to back of scriber and 75 x 3.15mm Galvanised nail in 3mm predrilled hole. 40x18 or 65x18 depending on weatherboard size
IL INTERNAL LINING: Selected Internal Lining	WB WEATHER BOARD: KLC Generation II, MicroPro H3.2 Bevel Back Weatherboard. Profile to NZS 3617	
BW BUILDING WRAP: Flexible Wall Underlay, As per NZBC E2/AS1 - Table 23, In extra high wind zones, Rigid Underlay required (9.1.7.2 E2/AS1)	BC1 BOXED CORNER COVER : 98x18 KLC Generation II, MicroPro H3.2 Cover Batten to boxed corners	
IN INSULATION: Selected Insulation	BC2 BOXED CORNER COVER: 85x18 KLC Generation II, MicroPro H3.2 Cover Batten to boxed corners	
TF TIMBER FRAME: H1.2 min treated timber framing		



MicroPro® Wood Treatment Technology

- KLC use the MicroPro Micronized Copper Azole (MCA) based preservative system for their wood products. It accounts for 80% of wood treated in the US for domestic applications.
- Micronized Copper Azole (MCA) preservatives are EPA-approved for use in NZ and AUS to NZS3640:2003 and AS1604:12012
- MicroPro preservative is applied using high-pressure and vacuum-pressure in the impregnation process in KLC's modern, automated treatment facility.
- Cut End Treatment: All cut ends surfaces are to be double coated and sealed before fixing. With a alkyl (oil based) primer
- MicroPro preservative solution has benefits of reduced corrosivity. Use Hot Dip Galvanised Fasteners & Stainless Steel fasteners. MicroPro may be placed in direct contact with Aluminium Building products in interior applications, and above ground exterior applications that provide proper water drainage
- MicroPro® is the first wood treatment process to be EPP (Environmentally Preferable Product) certified by Scientific Certification Systems based on a life cycle assessment.
- MicroPro® is environmentally sustainable, is low leaching, low VOC emissions and the award of the GREENGUARD Children and Schools Certification from the Greenguard® Environmental Institute.
- MicroPro® Wood Treatment Technology has received a Global GreenTag GreenRate™ Level A this declaration is 'Fit-for-Purpose' and confirmed for Green Building compliance.
- MicroPro® Wood Treatment Technology has received GreenTag PhD™ proving claims that MicroPro® is safe for human health (and ecosystems).

CAD REF :KLC CF20 BB50-56 - GENERAL DETAILS 02.dwg

DATE :11/10/2020



www.klc.co.nz

DETAILS MAY BE SUBJECT TO CHANGE WITHOUT NOTICE
COPYRIGHT © "KLC LIMITED" ALL RIGHTS ASSERTED



TYPE **Generation II H3.2 Exterior Cladding Systems**
Bevel Back Weatherboard - Cavity Fix

NAME **External Boxed Corner**



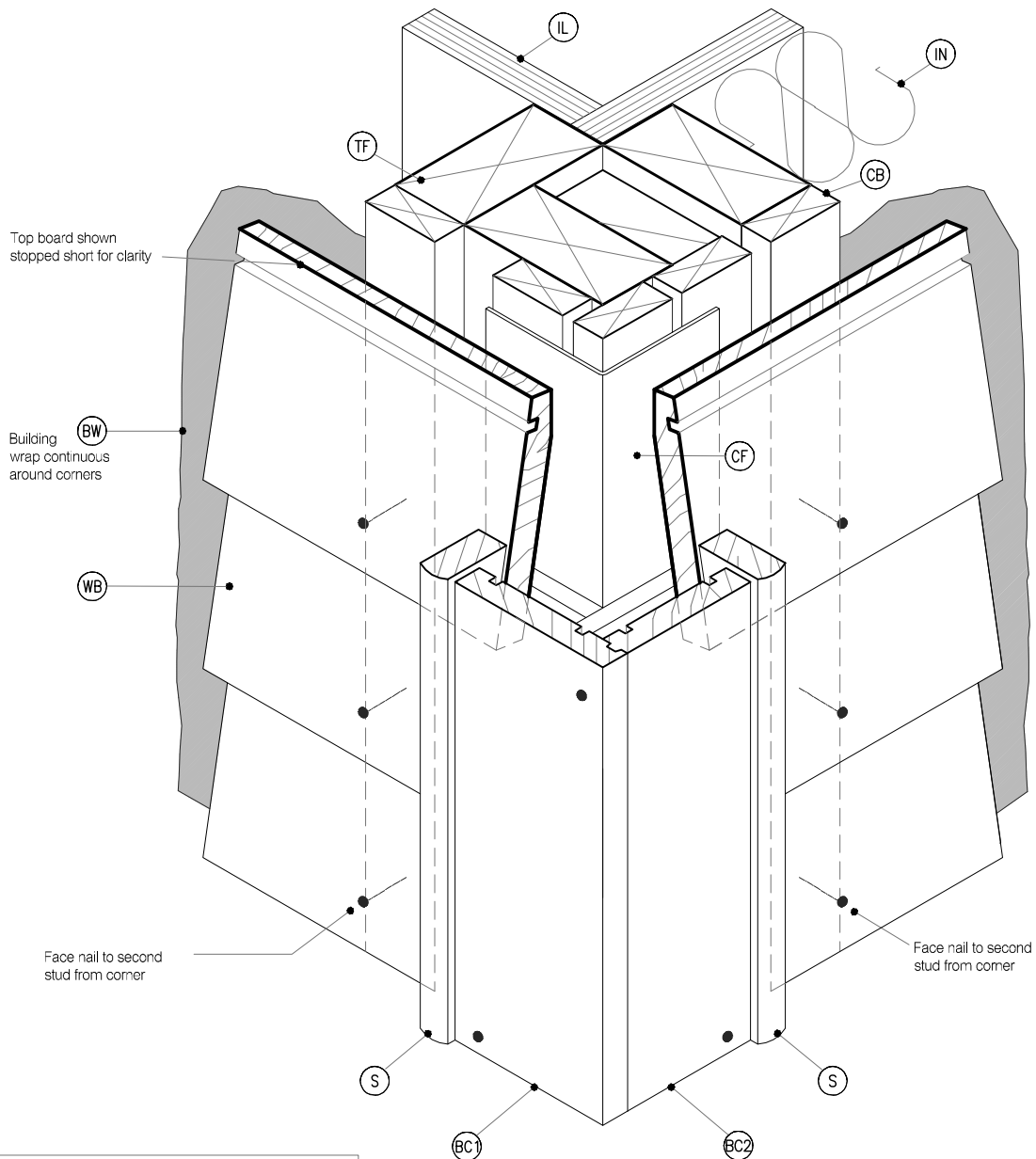
DRAWING SCALE
1:2 @ A4

ISSUE DATE
26/03/2019

DRAWING No	REVISION
KLC CF20 BB50	1

LEGEND :

PEF PEF ROD BACKING: Foam backing rod with sealant to perimeter that forms a waterproof air-seal. (Sealant 2:1 Ratio)	FT3 FLEXIBLE FLASHING TAPE: Flexible flashing tape lapped into corner, Refer NZBC E2/AS1 4.3.11	CF CORNER FLASHING: Aluminium, PVC or Stainless Steel corner flashing. Refer NZBC E2/AS1 4.3 50x50 Hem or Hook to Flashing Edges 75x75 NO. Hem or Hook Required EXTRA HIGH WIND ZONE 100x100 Hem or Hook to Flashing Edges, Refer NZBC E2/AS1 4.5.1
CB CAVITY BATTEN: 45x20 KLC Generation II, MicroPro H3.2 FJ Cavity Batten to form a 20mm cavity	FT4 FLEXIBLE FLASHING TAPE: Flexible flashing tape wrapped around pipe and over building wrap, Refer NZBC E2/AS1 4.3.11 & Figure 68	S SCRIBER: KLC Generation II, MicroPro H3.2 (10mm wide min) profile cut to fit weatherboard, sealant to back of scriber and 75 x 3.15mm Galvanised nail in 3mm predrilled hole. 40x18 or 65x18 depending on weatherboard size
IL INTERNAL LINING: Selected Internal Lining	WB WEATHER BOARD: KLC Generation II, MicroPro H3.2 Bevel Back Weatherboard. Profile to NZS 3617	
BW BUILDING WRAP: Flexible Wall Underlay, As per NZBC E2/AS1 - Table 23, In extra high wind zones, Ridgid Underlay required (9.1.7.2 E2/AS1)	BC1 BOXED CORNER COVER : 98x18 KLC Generation II, MicroPro H3.2 Cover Batten to boxed corners	
IN INSULATION: Selected Insulation	BC2 BOXED CORNER COVER: 85x18 KLC Generation II, MicroPro H3.2 Cover Batten to boxed corners	
TF TIMBER FRAME: H1.2 min treated timber framing		



NOTE :
Box corner trim must not be continuous over solid floor joists.

MicroPro® Wood Treatment Technology

- KLC use the MicroPro Micronized Copper Azole (MCA) based preservative system for their wood products. It accounts for 80% of wood treated in the US for domestic applications.
- Micronized Copper Azole (MCA) preservatives are EPA-approved for use in NZ and AUS to NZS3640:2003 and AS1604:12012
- MicroPro preservative is applied using high-pressure and vacuum-pressure in the impregnation process in KLC's modern, automated treatment facility.
- Cut End Treatment : All cut ends surfaces are to be double coated and sealed before fixing. With a alkylid (oil based) primer
- MicroPro preservative solution has benefits of reduced corrosivity. Use Hot Dip Galvanised Fasteners & Stainless Steel fasteners. MicroPro may be placed in direct contact with Aluminium Building products in interior applications, and above ground exterior applications that provide proper water drainage
- MicroPro® is the first wood treatment process to be EPP (Environmentally Preferable Product) certified by Scientific Certification Systems based on a life cycle assessment.
- MicroPro® is environmentally sustainable, is low leaching, low VOC emissions and the award of the GREENGUARD Children and Schools Certification from the Greenguard® Environmental Institute.
- MicroPro® Wood Treatment Technology has received a Global GreenTag GreenRate™ Level A this declaration is 'Fit-for-Purpose' and confirmed for Green Building compliance.
- MicroPro® Wood Treatment Technology has received GreenTag PhD™ proving claims that MicroPro® is safe for human health (and ecosystems).

CAD REF : KLC CF20 BB50-56 - GENERAL DETAILS 02.dwg
DATE : 11/10/2020



www.klc.co.nz
DETAILS MAY BE SUBJECT
TO CHANGE WITHOUT NOTICE
COPYRIGHT © "KLC LIMITED" ALL RIGHTS ASSERTED



TYPE Generation II H3.2 Exterior Cladding Systems
Bevel Back Weatherboard - Cavity Fix

NAME 3D - External Boxed Corner



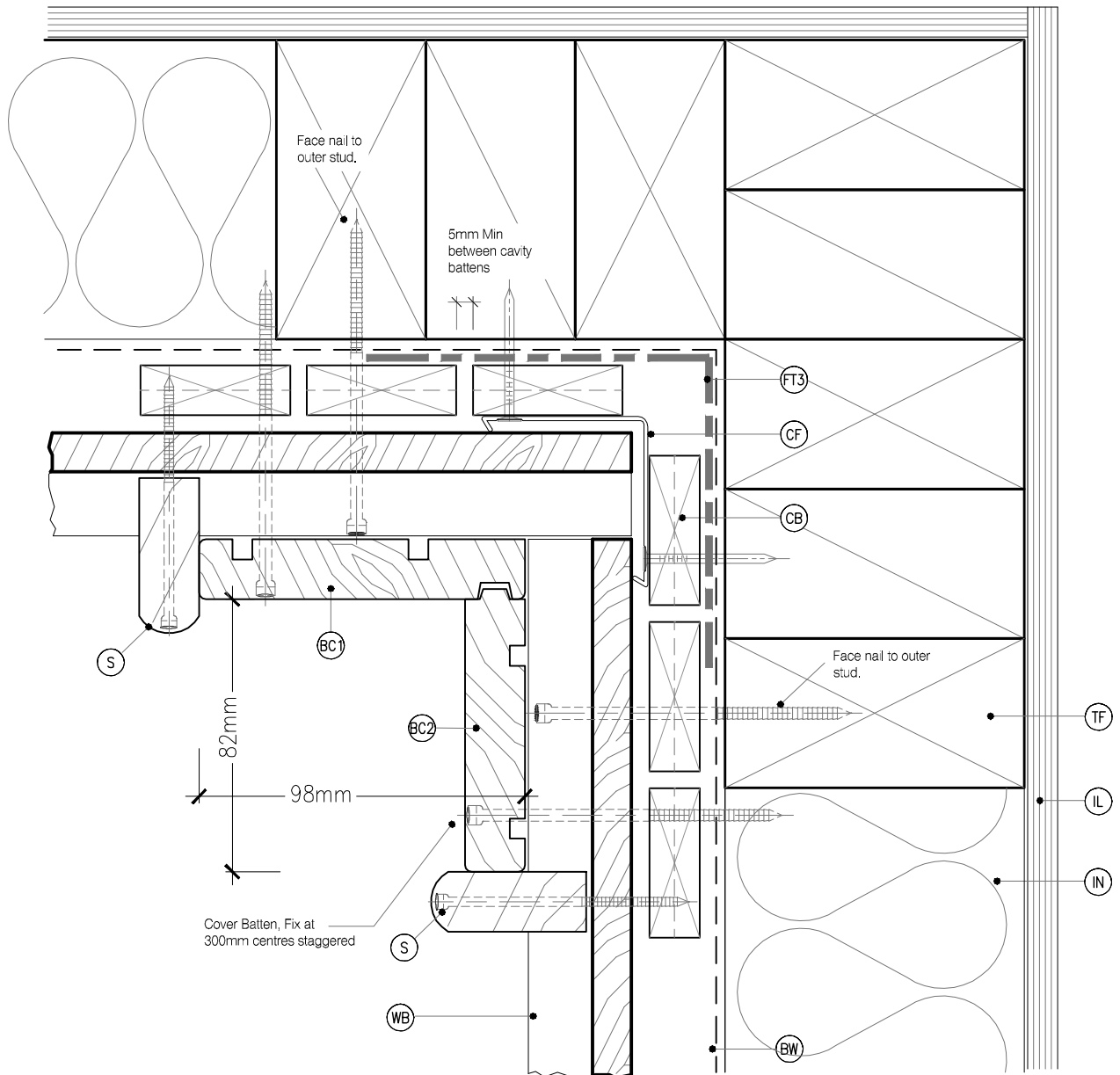
DRAWING SCALE
1:2 @ A4

ISSUE DATE
26/03/2019

DRAWING No KLC CF20 BB51
REVISION 1

LEGEND :

PEF PEF ROD BACKING: Foam backing rod with sealant to perimeter that forms a waterproof air-seal. (Sealant 2:1 Ratio)	FT3 FLEXIBLE FLASHING TAPE: Flexible flashing tape lapped into corner, Refer NZBC E2/AS1 4.3.11	CF CORNER FLASHING: Aluminium, PVC or Stainless Steel corner flashing. Refer NZBC E2/AS1 4.3 50x50 Hem or Hook to Flashing Edges 75x75 NO. Hem or Hook Required EXTRA HIGH WIND ZONE 100x100 Hem or Hook to Flashing Edges, Refer NZBC E2/AS1 4.5.1
CB CAVITY BATTEN: 45x20 KLC Generation II, MicroPro H3.2 FJ Cavity Batten to form a 20mm cavity	FT4 FLEXIBLE FLASHING TAPE: Flexible flashing tape wrapped around pipe and over building wrap, Refer NZBC E2/AS1 4.3.11 & Figure 68	S SCRIBER: KLC Generation II, MicroPro H3.2 (10mm wide min) profile cut to fit weatherboard, sealant to back of scriber and 75 x 3.15mm Galvanised nail in 3mm predrilled hole. 40x18 or 65x18 depending on weatherboard size
IL INTERNAL LINING: Selected Internal Lining	WB WEATHER BOARD: KLC Generation II, MicroPro H3.2 Bevel Back Weatherboard. Profile to NZS 3617	
BW BUILDING WRAP: Flexible Wall Underlay, As per NZBC E2/AS1 - Table 23, In extra high wind zones, Rigid Underlay required (9.1.7.2 E2/AS1)	BC1 BOXED CORNER COVER : 98x18 KLC Generation II, MicroPro H3.2 Cover Batten to boxed corners	
IN INSULATION: Selected Insulation	BC2 BOXED CORNER COVER: 85x18 KLC Generation II, MicroPro H3.2 Cover Batten to boxed corners	
TF TIMBER FRAME: H1.2 min treated timber framing		



DETAIL NOTES :

1. Aluminium extrusion must not be continuous over solid floor joists.
2. Corner Flashing is recommended but not required by E2/AS1
3. Flashing tape is recommended due to movement that may occur in corners but it is not required by E2/AS1

MicroPro® Wood Treatment Technology

1. KLC use the MicroPro Micronized Copper Azole (MCA) based preservative system for their wood products. It accounts for 80% of wood treated in the US for domestic applications.
2. Micronized Copper Azole (MCA) preservatives are EPA-approved for use in NZ and AUS to NZS3640:2003 and AS1604:12012
3. MicroPro preservative is applied using high-pressure and vacuum-pressure in the impregnation process in KLC's modern, automated treatment facility.
4. Cut End Treatment : All cut ends surfaces are to be double coated and sealed before fixing. With a alkyl (oil based) primer
5. MicroPro preservative solution has benefits of reduced corrosivity. Use Hot Dip Galvanised Fasteners & Stainless Steel fasteners. MicroPro may be placed in direct contact with Aluminium Building products in interior applications, and above ground exterior applications that provide proper water drainage
6. MicroPro® is the first wood treatment process to be EPP (Environmentally Preferable Product) certified by Scientific Certification Systems based on a life cycle assessment.
7. MicroPro® is environmentally sustainable, is low leaching, low VOC emissions and the award of the GREENGUARD Children and Schools' Certification from the Greenguard® Environmental Institute.
8. MicroPro® Wood Treatment Technology has received a Global GreenTag GreenRate™ Level A this declaration is 'Fit-for-Purpose' and confirmed for Green Building compliance.
9. MicroPro® Wood Treatment Technology has received GreenTag PhD™ proving claims that MicroPro® is safe for human health (and ecosystems).

CAD REF : KLC CF20 BB50-56 - GENERAL DETAILS 02.dwg
DATE : 11/10/2020



www.klc.co.nz
DETAILS MAY BE SUBJECT
TO CHANGE WITHOUT NOTICE
COPYRIGHT © "KLC LIMITED" ALL RIGHTS ASSERTED



TYPE **Generation II H3.2 Exterior Cladding Systems**
Bevel Back Weatherboard - Cavity Fix

NAME **Internal Boxed Corner**



DRAWING SCALE
1:2 @ A4

ISSUE DATE
26/03/2019

DRAWING No **KLC CF20 BB52** REVISION **1**

LEGEND :

- | | | |
|--|--|--|
| <p>(PEF) PEF ROD BACKING: Foam backing rod with sealant to perimeter that forms a waterproof air-seal. (Sealant 2:1 Ratio)</p> <p>(CB) CAVITY BATTEN: 45x20 KLC Generation II, MicroPro H3.2 FJ Cavity Batten to form a 20mm cavity</p> <p>(IL) INTERNAL LINING: Selected Internal Lining</p> <p>(BW) BUILDING WRAP: Flexible Wall Underlay, As per NZBC E2/AS1 - Table 23, In extra high wind zones, Rigid Underlay required (9.1.7.2 E2/AS1)</p> <p>(IN) INSULATION: Selected Insulation</p> <p>(TF) TIMBER FRAME: H1.2 min treated timber framing</p> | <p>(FT3) FLEXIBLE FLASHING TAPE: Flexible flashing tape lapped into corner, Refer NZBC E2/AS1 4.3.11</p> <p>(FT4) FLEXIBLE FLASHING TAPE: Flexible flashing tape wrapped around pipe and over building wrap, Refer NZBC E2/AS1 4.3.11 & Figure 68</p> <p>(WB) WEATHER BOARD: KLC Generation II, MicroPro H3.2 Bevel Back Weatherboard. Profile to NZS 3617</p> <p>(BC1) BOXED CORNER COVER : 98x18 KLC Generation II, MicroPro H3.2 Cover Batten to boxed corners</p> <p>(BC2) BOXED CORNER COVER: 85x18 KLC Generation II, MicroPro H3.2 Cover Batten to boxed corners</p> | <p>(CF) CORNER FLASHING: Aluminium, PVC or Stainless Steel corner flashing. Refer NZBC E2/AS1 4.3 50x50 Hem or Hook to Flashing Edges 75x75 NO. Hem or Hook Required EXTRA HIGH WIND ZONE 100x100 Hem or Hook to Flashing Edges, Refer NZBC E2/AS1 4.5.1</p> <p>(S) SCRIBER: KLC Generation II, MicroPro H3.2 (10mm wide min) profile cut to fit weatherboard, sealant to back of scribe and 75 x 3.15mm Galvanised nail in 3mm predrilled hole. 40x18 or 65x18 depending on weatherboard size</p> |
|--|--|--|

(FT3)

Flashing tape is recommended due to movement that may occur in corners but it is not required by E2/AS1

(CF)

Corner Flashing is recommended but not required by E2/AS1

Weatherboards this side to run through to stud and to be fixed first.

Double stud and solid nogging

(TF)

(IL)

(CB)

(BW)

(WB)

(BC2)

(BC1)

(S)

(S)

MicroPro® Wood Treatment Technology

- KLC use the MicroPro Micronized Copper Azole (MCA) based preservative system for their wood products. It accounts for 80% of wood treated in the US for domestic applications.
- Micronized Copper Azole (MCA) preservatives are EPA-approved for use in NZ and AUS to NZS3640:2003 and AS1604:12012
- MicroPro preservative is applied using high-pressure and vacuum-pressure in the impregnation process in KLC's modern, automated treatment facility.
- Cut End Treatment : All cut ends surfaces are to be double coated and sealed before fixing. With a alkylid (oil based) primer
- MicroPro preservative solution has benefits of reduced corrosivity. Use Hot Dip Galvanised Fasteners & Stainless Steel fasteners. MicroPro may be placed in direct contact with Aluminium Building products in interior applications, and above ground exterior applications that provide proper water drainage.
- MicroPro® is the first wood treatment process to be EPP (Environmentally Preferable Product) certified by Scientific Certification Systems based on a life cycle assessment.
- MicroPro® is environmentally sustainable, is low leaching, low VOC emissions and the award of the GREENGUARD Children and Schools Certification from the Greenguard® Environmental Institute.
- MicroPro® Wood Treatment Technology has received a Global GreenTag GreenRate™ Level A this declaration is 'Fit-for-Purpose' and confirmed for Green Building compliance.
- MicroPro® Wood Treatment Technology has received GreenTag PhD™ proving claims that MicroPro® is safe for human health (and ecosystems).



www.klc.co.nz

DETAILS MAY BE SUBJECT TO CHANGE WITHOUT NOTICE
COPYRIGHT © "KLC LIMITED" ALL RIGHTS ASSERTED



TYPE **Generation II H3.2 Exterior Cladding Systems**
Bevel Back Weatherboard - Cavity Fix

NAME **3D - Internal Boxed Corner**



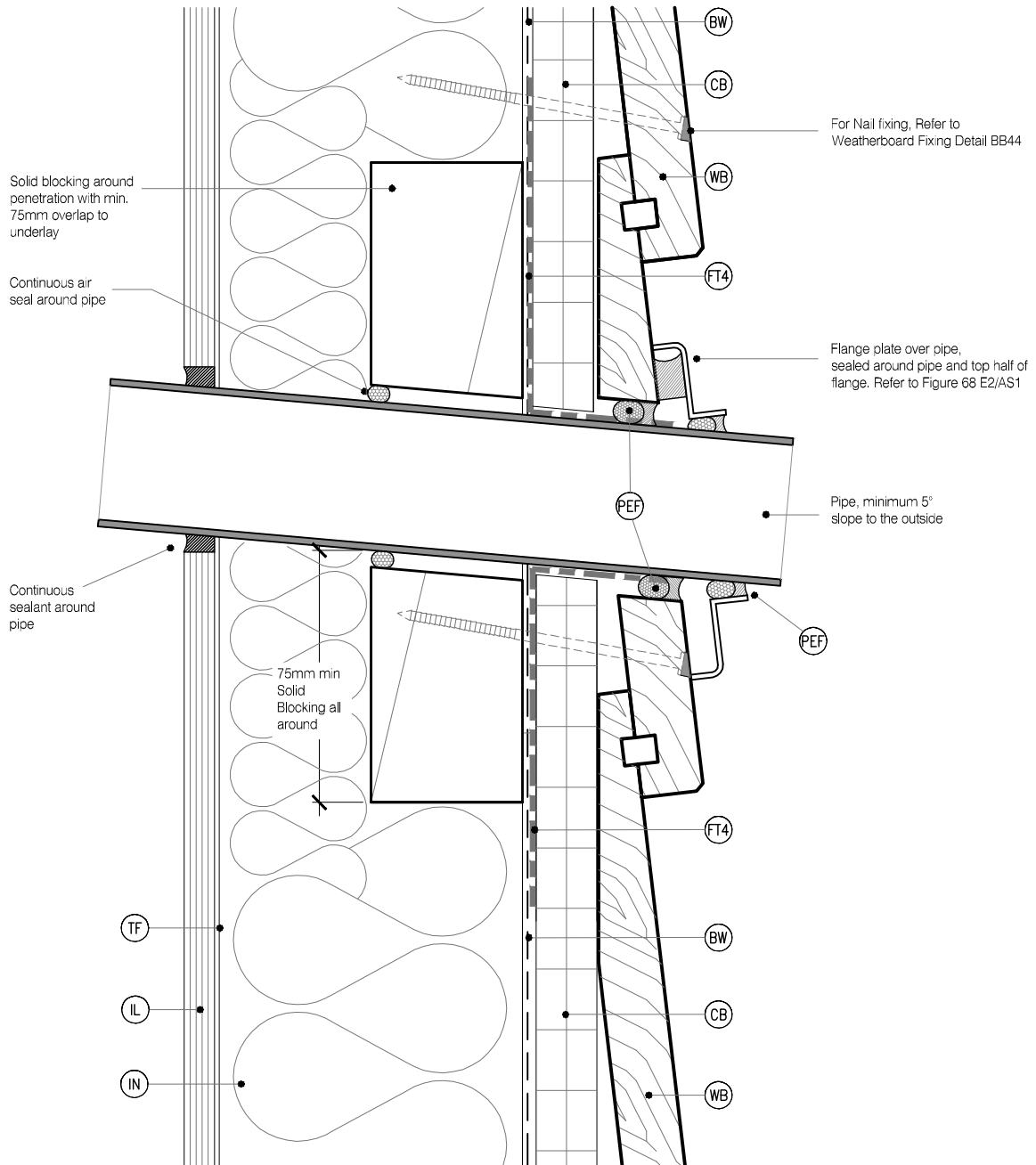
DRAWING SCALE
1:2 @ A4

ISSUE DATE
26/03/2019

DRAWING No	REVISION
KLC CF20 BB53	1

LEGEND :

PEF PEF ROD BACKING: Foam backing rod with sealant to perimeter that forms a waterproof air-seal. (Sealant 2:1 Ratio)	FT3 FLEXIBLE FLASHING TAPE: Flexible flashing tape lapped into corner, Refer NZBC E2/AS1 4.3.11	CF CORNER FLASHING: Aluminium, PVC or Stainless Steel corner flashing. Refer NZBC E2/AS1 4.3 50x50 Hem or Hook to Flashing Edges 75x75 NO. Hem or Hook Required EXTRA HIGH WIND ZONE 100x100 Hem or Hook to Flashing Edges, Refer NZBC E2/AS1 4.5.1
CB CAVITY BATTEN: 45x20 KLC Generation II, MicroPro H3.2 FJ Cavity Batten to form a 20mm cavity	FT4 FLEXIBLE FLASHING TAPE: Flexible flashing tape wrapped around pipe and over building wrap, Refer NZBC E2/AS1 4.3.11 & Figure 68	S SCRIBER: KLC Generation II, MicroPro H3.2 (10mm wide min) profile cut to fit weatherboard, sealant to back of scriber and 75 x 3.15mm Galvanised nail in 3mm predrilled hole. 40x18 or 65x18 depending on weatherboard size
IL INTERNAL LINING: Selected Internal Lining	WB WEATHER BOARD: KLC Generation II, MicroPro H3.2 Bevel Back Weatherboard. Profile to NZS 3617	
BW BUILDING WRAP: Flexible Wall Underlay, As per NZBC E2/AS1 - Table 23, In extra high wind zones, Ridgid Underlay required (9.1.7.2 E2/AS1)	BC1 BOXED CORNER COVER : 98x18 KLC Generation II, MicroPro H3.2 Cover Batten to boxed corners	
IN INSULATION: Selected Insulation	BC2 BOXED CORNER COVER: 85x18 KLC Generation II, MicroPro H3.2 Cover Batten to boxed corners	
TF TIMBER FRAME: H1.2 min treated timber framing		



MicroPro® Wood Treatment Technology

- KLC use the MicroPro Micronized Copper Azole (MCA) based preservative system for their wood products. It accounts for 80% of wood treated in the US for domestic applications.
- Micronized Copper Azole (MCA) preservatives are EPA-approved for use in NZ and AUS to NZS3640:2003 and AS1604:12012
- MicroPro preservative is applied using high-pressure and vacuum-pressure in the impregnation process in KLC's modern, automated treatment facility.
- Cut End Treatment: All cut ends surfaces are to be double coated and sealed before fixing. With a alkyl (oil based) primer
- MicroPro preservative solution has benefits of reduced corrosivity. Use Hot Dip Galvanised Fasteners & Stainless Steel fasteners. MicroPro may be placed in direct contact with Aluminium Building products in interior applications, and above ground exterior applications that provide proper water drainage.
- MicroPro® is the first wood treatment process to be EPP (Environmentally Preferable Product) certified by Scientific Certification Systems based on a life cycle assessment.
- MicroPro® is environmentally sustainable, is low leaching, low VOC emissions and the award of the GREENGUARD Children and Schools Certification from the Greenguard® Environmental Institute.
- MicroPro® Wood Treatment Technology has received a Global GreenTag GreenRate™ Level A this declaration is 'Fit-for-Purpose' and confirmed for Green Building compliance.
- MicroPro® Wood Treatment Technology has received GreenTag PhD™ proving claims that MicroPro® is safe for human health (and ecosystems).



Generation II H3.2 Exterior Cladding Systems Bevel Back Weatherboard - Cavity Fix

NAME Pipe Penetration



DRAWING SCALE
1:2 @ A4

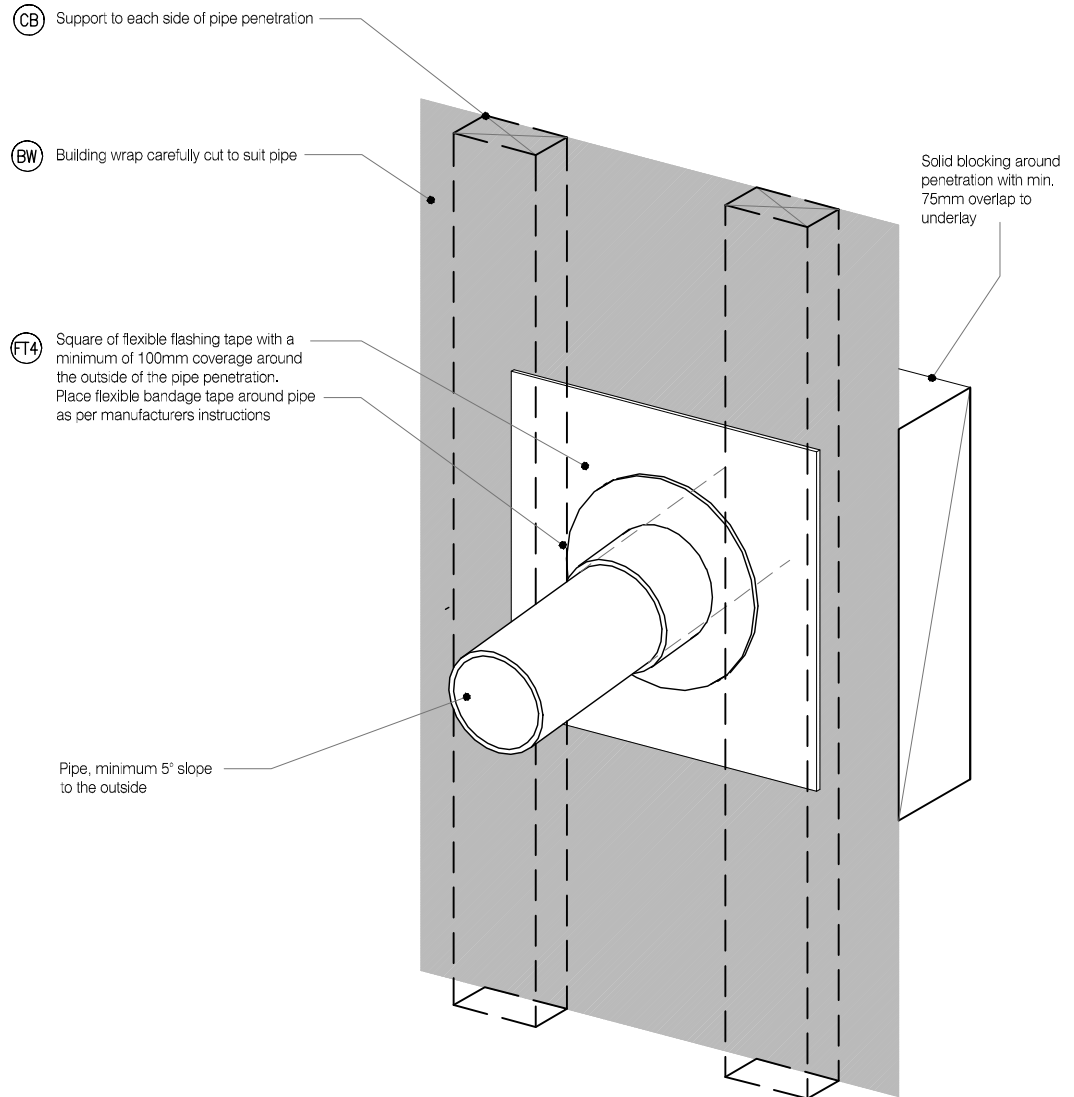
ISSUE DATE
26/03/2019

DRAWING No
KLC CF20 BB54

REVISION
1

LEGEND :

PEF PEF ROD BACKING: Foam backing rod with sealant to perimeter that forms a waterproof air-seal. (Sealant 2:1 Ratio)	FT3 FLEXIBLE FLASHING TAPE: Flexible flashing tape lapped into corner, Refer NZBC E2/AS1 4.3.11	CF CORNER FLASHING: Aluminium, PVC or Stainless Steel corner flashing. Refer NZBC E2/AS1 4.3 50x50 Hem or Hook to Flashing Edges 75x75 NO. Hem or Hook Required EXTRA HIGH WIND ZONE 100x100 Hem or Hook to Flashing Edges, Refer NZBC E2/AS1 4.5.1
CB CAVITY BATTEN: 45x20 KLC Generation II, MicroPro H3.2 FJ Cavity Batten to form a 20mm cavity	FT4 FLEXIBLE FLASHING TAPE: Flexible flashing tape wrapped around pipe and over building wrap, Refer NZBC E2/AS1 4.3.11 & Figure 68	S SCRIBER: KLC Generation II, MicroPro H3.2 (10mm wide min) profile cut to fit weatherboard, sealant to back of scribe and 75 x 3.15mm Galvanised nail in 3mm predrilled hole. 40x18 or 65x18 depending on weatherboard size
IL INTERNAL LINING: Selected Internal Lining	WB WEATHER BOARD: KLC Generation II, MicroPro H3.2 Bevel Back Weatherboard. Profile to NZS 3617	
BW BUILDING WRAP: Flexible Wall Underlay, As per NZBC E2/AS1 - Table 23, In extra high wind zones, Ridgid Underlay required (9.1.7.2 E2/AS1)	BC1 BOXED CORNER COVER : 98x18 KLC Generation II, MicroPro H3.2 Cover Batten to boxed corners	
IN INSULATION: Selected Insulation	BC2 BOXED CORNER COVER: 85x18 KLC Generation II, MicroPro H3.2 Cover Batten to boxed corners	
TF TIMBER FRAME: H1.2 min treated timber framing		



MicoPro® Wood Treatment Technology

- KLC use the MicroPro Micronized Copper Azole (MCA) based preservative system for their wood products. It accounts for 80% of wood treated in the US for domestic applications.
- Micronized Copper Azole (MCA) preservatives are EPA-approved for use in NZ and AUS to NZS3640:2003 and AS1604:12012
- MicroPro preservative is applied using high-pressure and vacuum-pressure in the impregnation process in KLC's modern, automated treatment facility.
- Cut End Treatment : All cut ends surfaces are to be double coated and sealed before fixing. With a alkylid (oil based) primer
- MicroPro preservative solution has benefits of reduced corrosivity. Use Hot Dip Galvanised Fasteners & Stainless Steel fasteners. MicroPro may be placed in direct contact with Aluminium Building products in interior applications, and above ground exterior applications that provide proper water drainage.
- MicroPro® is the first wood treatment process to be EPP (Environmentally Preferable Product) certified by Scientific Certification Systems based on a life cycle assessment.
- MicroPro® is environmentally sustainable, is low leaching, low VOC emissions and the award of the GREENGUARD Children and Schools Certification from the Greenguard® Environmental Institute.
- MicroPro® Wood Treatment Technology has received a Global GreenTag GreenRate™ Level A this declaration is 'Fit-for-Purpose' and confirmed for Green Building compliance.
- MicroPro® Wood Treatment Technology has received GreenTag PhD™ proving claims that MicroPro® is safe for human health (and ecosystems).



TYPE **Generation II H3.2 Exterior Cladding Systems**
Bevel Back Weatherboard - Cavity Fix

NAME **3D - Pipe Penetration**



DRAWING SCALE
1:2 @ A4

ISSUE DATE
26/03/2019

DRAWING No **KLC CF20 BB55** REVISION **1**