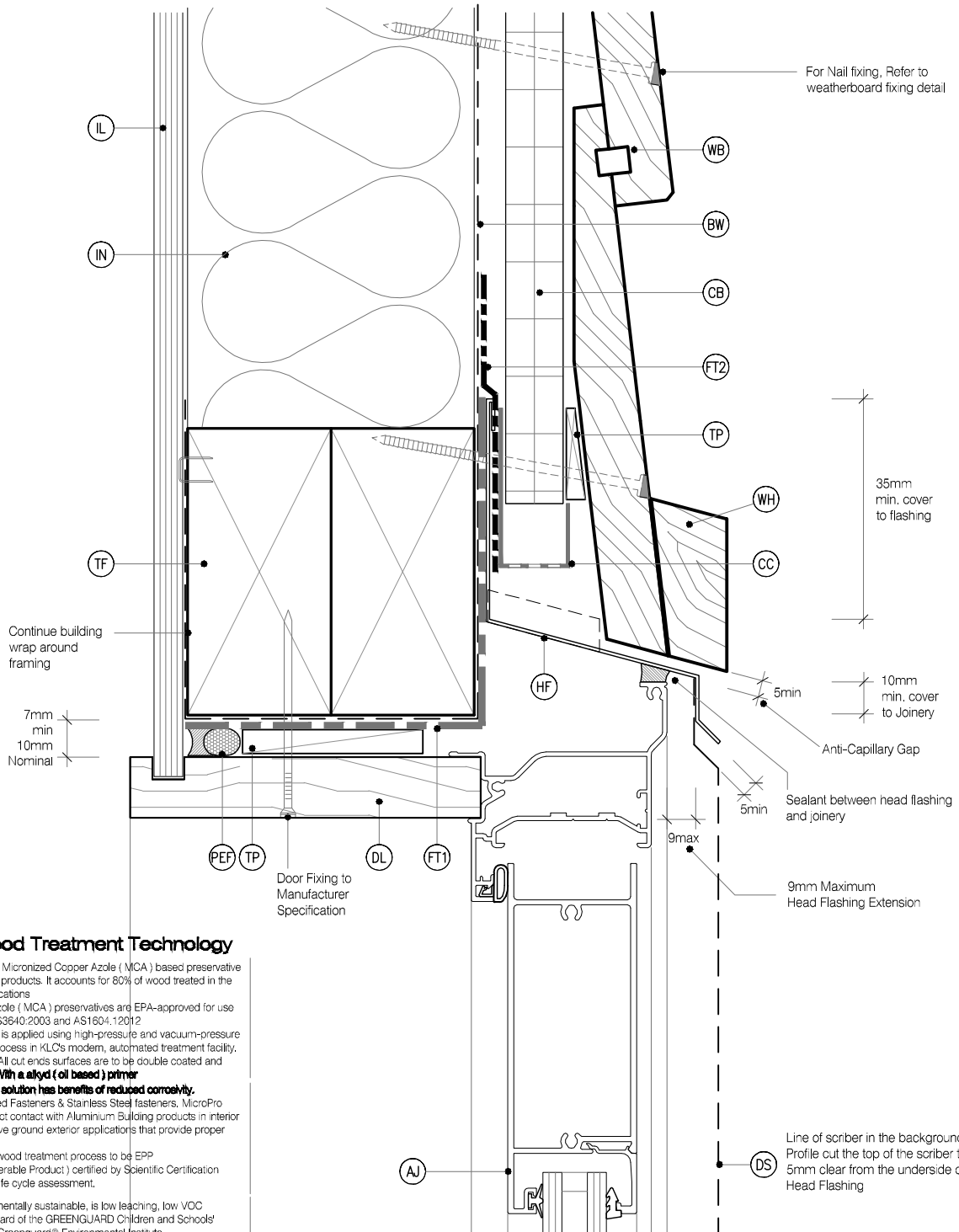


LEGEND :

- (PEF) PEF ROD BACKING: Foam backing rod with sealant to cavity in door perimeter that forms a waterproof air-seal. (Sealant 2:1 Ratio)
- (AJ) ALUMINIUM JOINERY: Selected double glazed aluminium joinery
- (IL) INTERNAL LINING: Selected Internal Lining
- (BW) BUILDING WRAP: Flexible Wall Underlay, As per NZBC E2/AS1 - Table 23, In extra high wind zones, Rigid Underlay required (9.1.7.2 E2/AS1)
- (CC) CAVITY CLOSURE: Cavity closure strip, positioned to give a 15mm Min drip edge to cladding
- (CB) CAVITY BATTEN: 45x20 KLC Generation II, MicroPro H3.2 FJ Cavity Batten to form a 20mm cavity

- (FT1) FLASHING TAPE: Flashing tape over wrap 70mm (50 min) turn-down required in corners only. Refer to Fig. 72 of NZBC E2/AS1
- (FT2) FLEXIBLE FLASHING TAPE: Flexible flashing tape lapped over aluminium head flashing or 2nd layer of Building Wrap to taped joint or top of frame
- (TF) TIMBER FRAME: H:1.2 min treated timber framing
- (WB) WEATHER BOARD: KLC Generation II, MicroPro H3.2 Bevel Back Weatherboard, Profile to NZS 3617
- (IN) INSULATION: Selected Insulation
- (HF) HEAD FLASHING: Aluminium head flashing with minimum 15 degree fall and optional hemmed edges as per table 7 E2/AS1
- (TP) TIMBER PACKER: MicroPro H3.2 Treated Packer

- (SS) SILL SCRIBER: MicroPro H3.2, Horizontal batten under window as necessary to suit profile
- (DL) DOOR LINER: As Specified (We Recommend MicroPro H3.2 Liners & Sills)
- (WH) WEATHERHEAD: MicroPro H3.2, Horizontal batten above window as necessary to suit profile, shaped to shed water, sealant to back of sill scriber
- (WZ) WANZ SUPPORT: Provide window support as required by joinery manufacturer
- (TP) TIMBER PACKER: MicroPro H3.2 Treated Packer
- (DS) DOOR SCRIBER: KLC Generation II, MicroPro H3.2 profile cut to fit weatherboard, sealant to back of scribe, 40x18 or 65x18 depending on weatherboard size



MicroPro® Wood Treatment Technology

- KLC use the MicroPro Micronized Copper Azole (MCA) based preservative system for their wood products. It accounts for 80% of wood treated in the US for domestic applications
- Micronized Copper Azole (MCA) preservatives are EPA-approved for use in NZ and AUS to NZS3610:2003 and AS1604.12012
- MicroPro preservative is applied using high-pressure and vacuum-pressure in the impregnation process in KLC's modern, automated treatment facility.
- Cut-End Treatment : All cut ends surfaces are to be double coated and sealed before fixing. With a alkyl (oil based) primer
- MicroPro preservative solution has benefits of reduced corrosivity.** Use Hot Dip Galvanised Fasteners & Stainless Steel fasteners. MicroPro may be placed in direct contact with Aluminium Building products in interior applications, and above ground exterior applications that provide proper water drainage
- MicroPro® is the first wood treatment process to be EPP (Environmentally Preferable Product) certified by Scientific Certification Systems based on a life cycle assessment.
- MicroPro® is environmentally sustainable, is low leaching, low VOC emissions and the award of the GREENGUARD Children and Schools' Certification from the Greenguard® Environmental Institute.
- MicroPro® Wood Treatment Technology has received a Global GreenTag GreenRate™ Level A this declaration is 'Fit-for-Purpose' and confirmed for Green Building compliance.
- MicroPro® Wood Treatment Technology has received GreenTag PhD™ proving claims that MicroPro® is safe for human health (and ecosystems).

CAD REF :KLC CF20 BB20-25 - 0000 DETAILS.dwg

DATE :11/10/2020



www.klc.co.nz
DETAILS MAY BE SUBJECT
TO CHANGE WITHOUT NOTICE
COPYRIGHT © "KLC LIMITED" ALL RIGHTS ASSERTED



TYPE **Generation II H3.2 Exterior Cladding Systems
Bevel Back Weatherboard - Cavity Fix**

NAME **Door Head Detail - Aluminium Joinery**



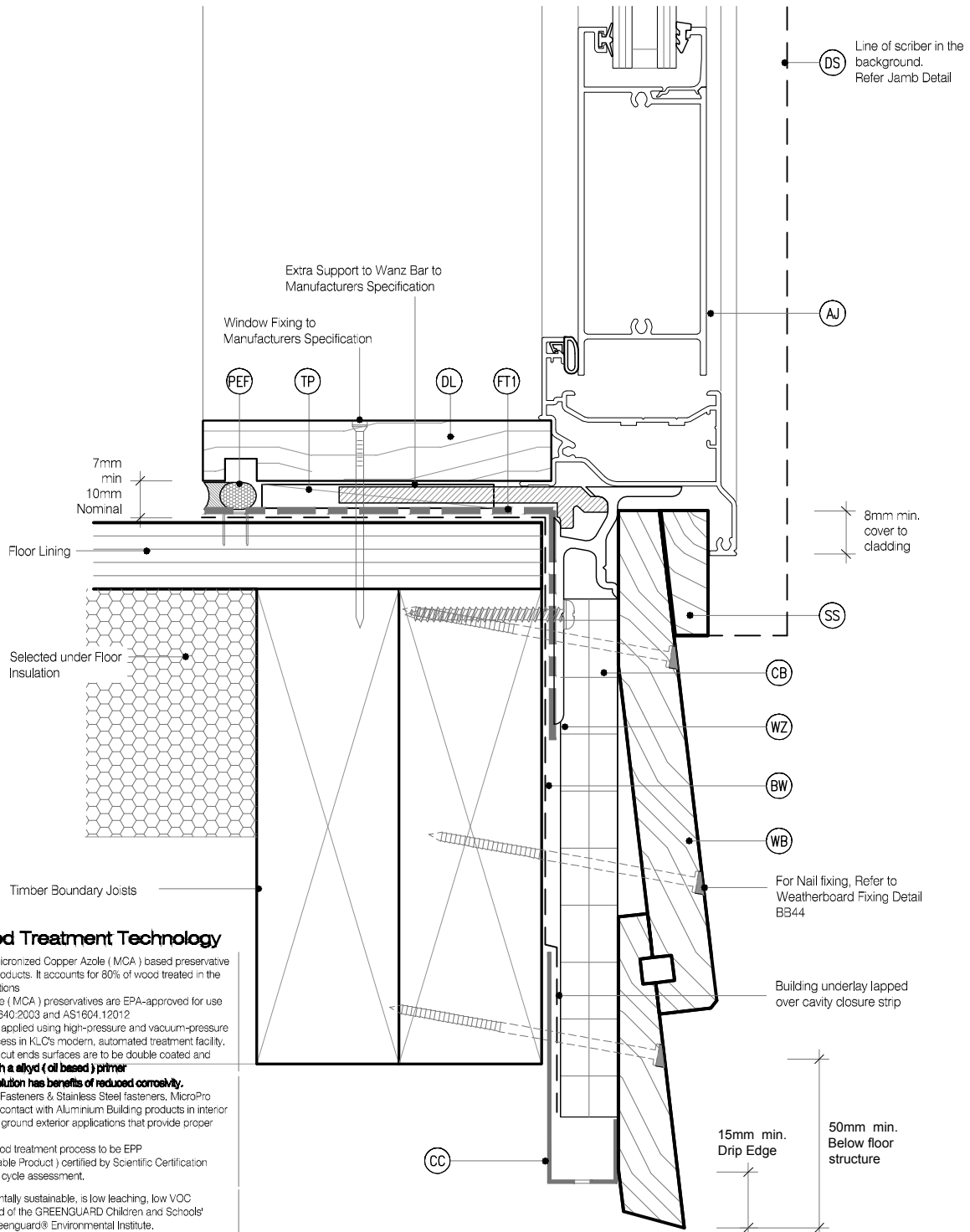
DRAWING SCALE
1:2 @ A4

ISSUE DATE
26/03/2019

DRAWING No **KLC CF20 BB20** REVISION **1**

LEGEND :

PEF PEF ROD BACKING: Foam backing rod with sealant to cavity in door perimeter that forms a waterproof air-seal. (Sealant 2:1 Ratio)	FT1 FLASHING TAPE: Flashing tape over wrap 70mm (50 min) turn-down required in corners only. Refer to Fig. 72 of NZBC E2/AS1	SS SILL SCRIBER: MicroPro H3.2, Horizontal batten under window as necessary to suit profile
AJ ALUMINIUM JOINERY: Selected double glazed aluminium joinery	FT2 FLEXIBLE FLASHING TAPE: Flexible flashing tape lapped over aluminium head flashing or 2nd layer of Building Wrap to taped joint or top of frame	DL DOOR LINER: As Specified (We Recommend MicroPro H3.2 Liners & Sills)
IL INTERNAL LINING: Selected Internal Lining	TF TIMBER FRAME: H1.2 min treated timber framing	WH WEATHERHEAD: MicroPro H3.2, Horizontal batten above window as necessary to suit profile, shaped to shed water, sealant to back of sill scriber
BW BUILDING WRAP: Flexible Wall Underlay, As per NZBC E2/AS1 - Table 23, In extra high wind zones, Rigid Underlay required (9.1.7.2 E2/AS1)	WB WEATHER BOARD: KLC Generation II, MicroPro H3.2 Bevel Back Weatherboard, Profile to NZS 3617	WZ WANZ SUPPORT: Provide window support as required by joinery manufacturer
CC CAVITY CLOSURE: Cavity closure strip, positioned to give a 15mm Min drip edge to cladding	IN INSULATION: Selected Insulation	TP TIMBER PACKER: MicroPro H3.2 Treated Packer
CB CAVITY BATTEN: 45x20 KLC Generation II, MicroPro H3.2 FJ Cavity Batten to form a 20mm cavity	HF HEAD FLASHING: Aluminium head flashing with minimum 15 degree fall and optional hemmed edges as per table 7 E2/AS1	DS DOOR SCRIBER: KLC Generation II, MicroPro H3.2 profile cut to fit weatherboard, sealant to back of scriber, 40x18 or 65x18 depending on weatherboard size
	TP TIMBER PACKER: MicroPro H3.2 Treated Packer	



MicroPro® Wood Treatment Technology

- KLC use the MicroPro Micronized Copper Azole (MCA) based preservative system for their wood products. It accounts for 80% of wood treated in the US for domestic applications
- Micronized Copper Azole (MCA) preservatives are EPA-approved for use in NZ and AUS to NZS3640:2003 and AS1604.12012
- MicroPro preservative is applied using high-pressure and vacuum-pressure in the impregnation process in KLC's modern, automated treatment facility.
- Cut End Treatment : All cut ends surfaces are to be double coated and sealed before fixing. With a alkyl (oil based) primer
- MicroPro preservative solution has benefits of reduced corrosivity.** Use Hot Dip Galvanised Fasteners & Stainless Steel fasteners. MicroPro may be placed in direct contact with Aluminium Building products in interior applications, and above ground exterior applications that provide proper water drainage
- MicroPro® is the first wood treatment process to be EPP (Environmentally Preferable Product) certified by Scientific Certification Systems based on a life cycle assessment.
- MicroPro® is environmentally sustainable, is low leaching, low VOC emissions and the award of the GREENGUARD Children and Schools' Certification from the Greenguard® Environmental Institute.
- MicroPro® Wood Treatment Technology has received a Global GreenTag GreenRate™ Level A this declaration is 'Fit-for-Purpose' and confirmed for Green Building compliance.
- MicroPro® Wood Treatment Technology has received GreenTag PhD™ proving claims that MicroPro® is safe for human health (and ecosystems).



www.klc.co.nz
DETAILS MAY BE SUBJECT
TO CHANGE WITHOUT NOTICE
COPYRIGHT © "KLC LIMITED" ALL RIGHTS ASSERTED

TYPE **Generation II H3.2 Exterior Cladding Systems**
Bevel Back Weatherboard - Cavity Fix

NAME **Door Sill Detail - Aluminium Joinery**



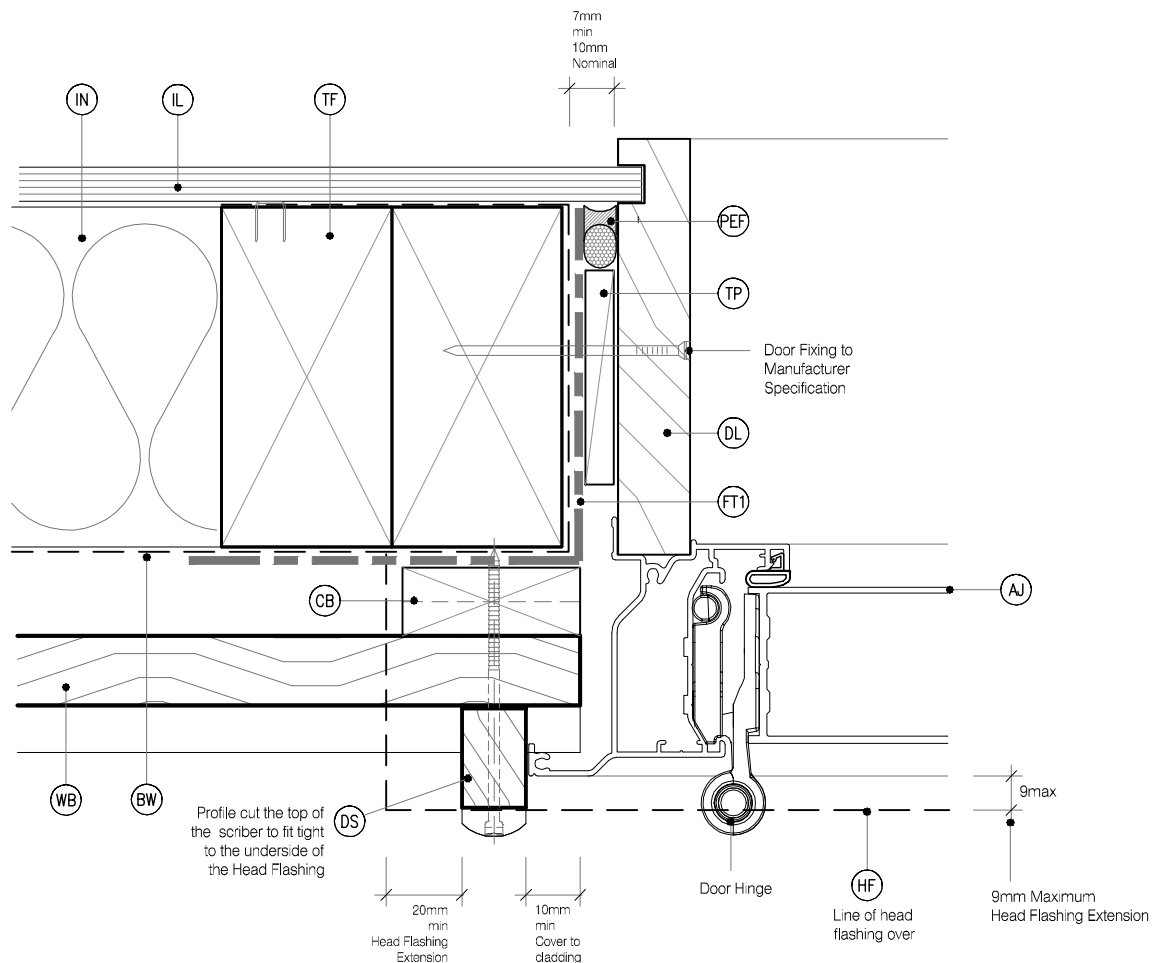
DRAWING SCALE
1:2 @ A4

ISSUE DATE
26/03/2019

DRAWING No **KLC CF20 BB21** REVISION **1**

LEGEND :

PEF PEF ROD BACKING: Foam backing rod with sealant to cavity in door perimeter that forms a waterproof air-seal. (Sealant 2:1 Ratio)	FT1 FLASHING TAPE: Flashing tape over wrap 70mm (50 min) turn-down required in corners only. Refer to Fig. 72 of NZBC E2/AS1	SS SILL SCRIBER: MicroPro H3.2, Horizontal batten under window as necessary to suit profile
AJ ALUMINIUM JOINERY: Selected double glazed aluminium joinery	FT2 FLEXIBLE FLASHING TAPE: Flexible flashing tape lapped over aluminium head flashing or 2nd layer of Building Wrap to taped joint or top of frame	DL DOOR LINER: As Specified (We Recommend MicroPro H3.2 Liners & Sills)
IL INTERNAL LINING: Selected Internal Lining	TF TIMBER FRAME: H1.2 min treated timber framing	WH WEATHERHEAD: MicroPro H3.2, Horizontal batten above window as necessary to suit profile, shaped to shed water, sealant to back of sill scriber
BW BUILDING WRAP: Flexible Wall Underlay, As per NZBC E2/AS1 - Table 23, In extra high wind zones, Rigid Underlay required (9.1.7.2 E2/AS1)	WB WEATHER BOARD: KLC Generation II, MicroPro H3.2 Bevel Back Weatherboard, Profile to NZS 3617	WZ WANZ SUPPORT: Provide window support as required by joinery manufacturer
CC CAVITY CLOSURE: Cavity closure strip, positioned to give a 15mm Min drip edge to cladding	IN INSULATION: Selected Insulation	TP TIMBER PACKER: MicroPro H3.2 Treated Packer
CB CAVITY BATTEN: 45x20 KLC Generation II, MicroPro H3.2 FJ Cavity Batten to form a 20mm cavity	HF HEAD FLASHING: Aluminium head flashing with minimum 15 degree fall and optional hemmed edges as per table 7 E2/AS1	DS DOOR SCRIBER: KLC Generation II, MicroPro H3.2 profile cut to fit weatherboard, sealant to back of scribe, 40x18 or 65x18 depending on weatherboard size



MicroPro® Wood Treatment Technology

- KLC use the MicroPro Micronized Copper Azole (MCA) based preservative system for their wood products. It accounts for 80% of wood treated in the US for domestic applications.
- Micronized Copper Azole (MCA) preservatives are EPA-approved for use in NZ and AUS to NZS3640:2003 and AS1604:12012
- MicroPro preservative is applied using high-pressure and vacuum-pressure in the impregnation process in KLC's modern, automated treatment facility.
- Cut End Treatment: All cut ends surfaces are to be double coated and sealed before fixing. With a alkyl (oil based) primer
- MicroPro preservative solution has benefits of reduced corrosivity. Use Hot Dip Galvanised Fasteners & Stainless Steel fasteners. MicroPro may be placed in direct contact with Aluminium Building products in interior applications, and above ground exterior applications that provide proper water drainage.
- MicroPro® is the first wood treatment process to be EPP (Environmentally Preferable Product) certified by Scientific Certification Systems based on a life cycle assessment.
- MicroPro® is environmentally sustainable, is low leaching, low VOC emissions and the award of the GREENGUARD Children and Schools Certification from the Greenguard® Environmental Institute.
- MicroPro® Wood Treatment Technology has received a Global GreenTag GreenRate™ Level A this declaration is 'Fit-for-Purpose' and confirmed for Green Building compliance.
- MicroPro® Wood Treatment Technology has received GreenTag PhD™ proving claims that MicroPro® is safe for human health (and ecosystems).

CAD REF : KLC CF20 BB20-25 - DOOR DETAILS.dwg

DATE : 11/10/2020



www.klc.co.nz

DETAILS MAY BE SUBJECT TO CHANGE WITHOUT NOTICE
COPYRIGHT © KLC LIMITED ALL RIGHTS ASSERTED



TYPE **Generation II H3.2 Exterior Cladding Systems**
Bevel Back Weatherboard - Cavity Fix

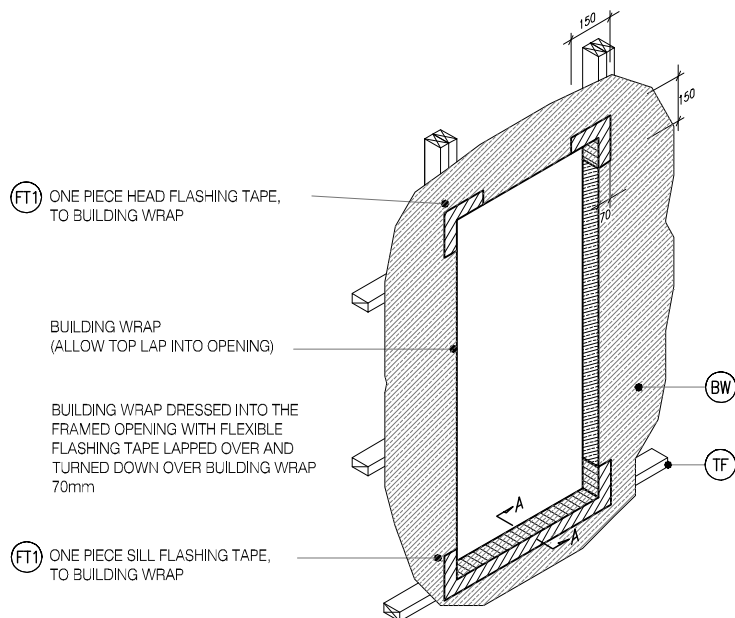
NAME **Door Jamb Detail - Aluminium Joinery**



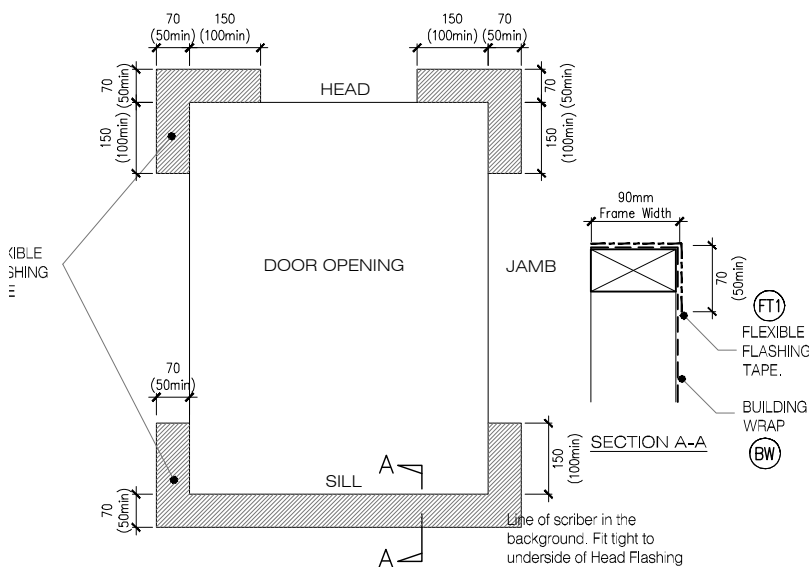
DRAWING SCALE
1:2 @ A4

ISSUE DATE
26/03/2019

DRAWING No **KLC CF20 BB22** REVISION **1**



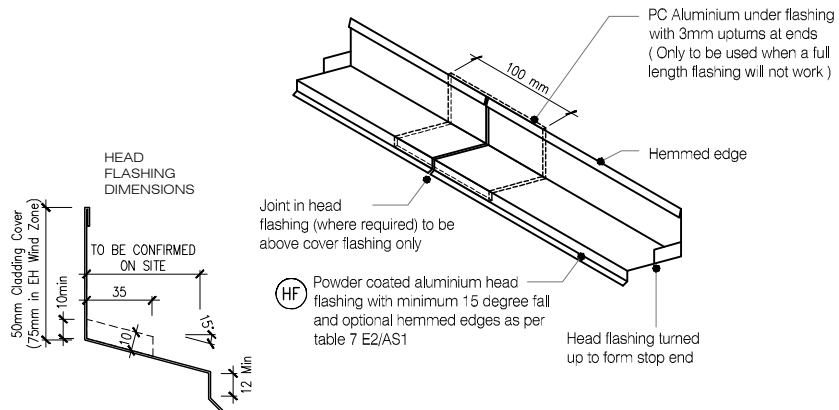
D4 TYPICAL DOOR OPENING (FLASHING TAPE)
BB23 SCALE : N.T.S



D5 FLEXIBLE BUILDING WRAP AT OPENING
BB23 SCALE : 1 / 5 @ A1, 1 / 10 @ A3

MicroPro® Wood Treatment Technology

1. KLC use the MicroPro Micronized Copper Azole (MCA) based preservative system for their wood products. It accounts for 80% of wood treated in the US for domestic applications
2. Micronized Copper Azole (MCA) preservatives are EPA-approved for use in NZ and AUS to NZS3640:2003 and AS1604:12012
3. MicroPro preservative is applied using high-pressure and vacuum-pressure in the impregnation process in KLC's modern, automated treatment facility.
4. Cut End Treatment: All cut ends surfaces are to be double coated and sealed before fixing. With a alkyl (oil based) primer
5. MicroPro preservative solution has benefits of reduced corrosivity. Use Hot Dip Galvanised Fasteners & Stainless Steel fasteners. MicroPro may be placed in direct contact with Aluminium Building products in interior applications, and above ground exterior applications that provide proper water drainage
6. MicroPro® is the first wood treatment process to be EPP (Environmentally Preferable Product) certified by Scientific Certification Systems based on a life cycle assessment.
7. MicroPro® is environmentally sustainable, is low leaching, low VOC emissions and the award of the GREENGUARD Children and Schools' Certification from the Greenguard® Environmental Institute.
8. MicroPro® Wood Treatment Technology has received a Global GreenTag GreenRate™ Level A this declaration is 'Fit-for-Purpose' and confirmed for Green Building compliance.
9. MicroPro® Wood Treatment Technology has received GreenTag PhD™ proving claims that MicroPro® is safe for human health (and ecosystems).



ONE PIECE PC ALUMINIUM HEAD FLASHING 15° SLOPE WITH 10mm min COVER TO JOINERY EXTEND 30mm min EITHER SIDE OF JOINERY WITH STOP ENDS

D6 TYPICAL HEAD & FLASHING JOINT
BB23 SCALE : 1 / 2 @ A1, 1 / 4 @ A3