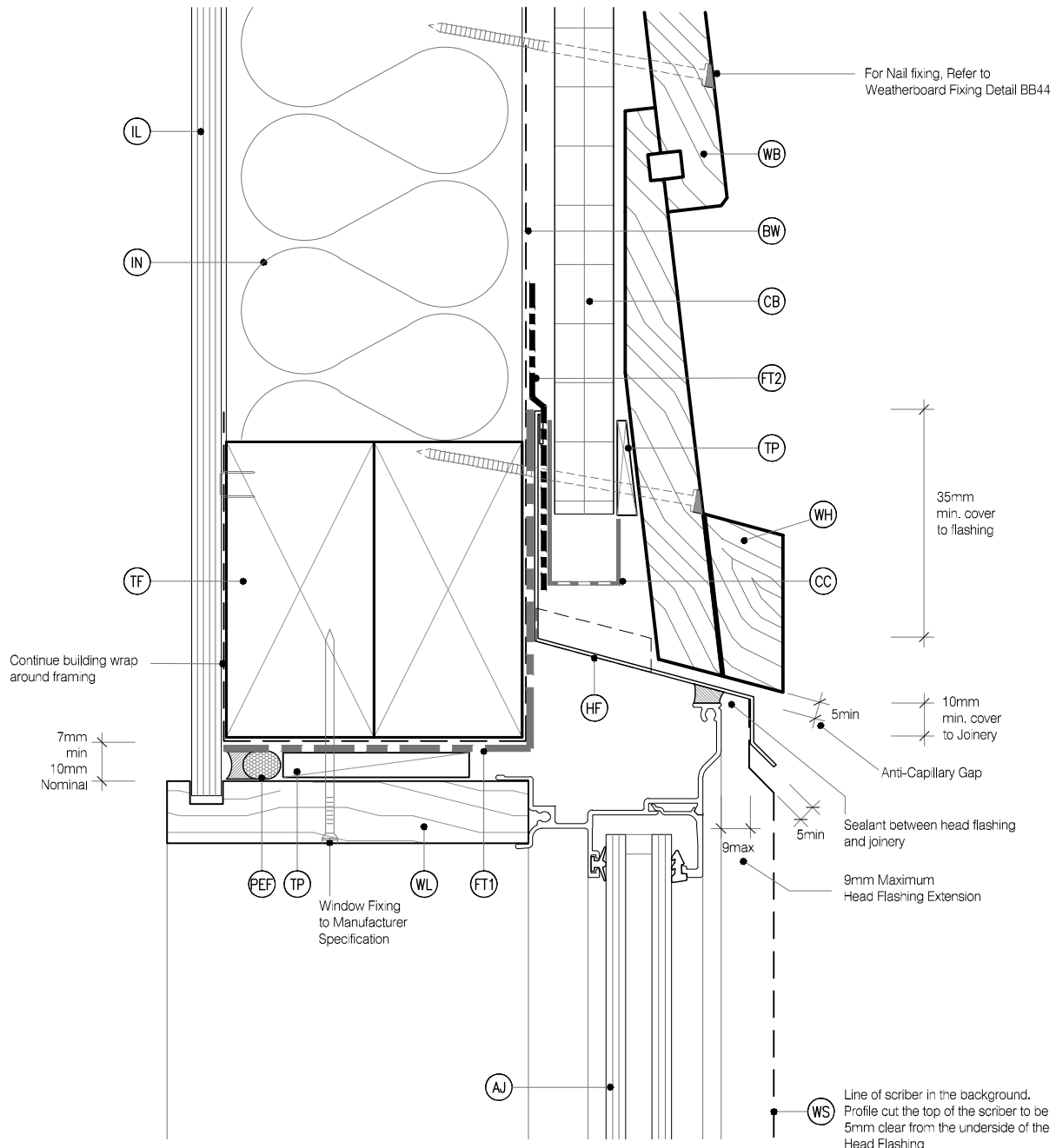


LEGEND :

- (PEF) PEF ROD BACKING: Foam backing rod with sealant to cavity in Window perimeter that forms a waterproof air-seal. (Sealant 2:1 Ratio)
- (AJ) ALUMINIUM JOINERY: Selected double glazed aluminium joinery
- (IL) INTERNAL LINING: Selected Internal Lining
- (BW) BUILDING WRAP: Flexible Wall Underlay, As per NZBC E2/AS1 - Table 23, In extra high wind zones, Rigid Underlay required (9.1.7.2 E2/AS1)
- (CC) CAVITY CLOSURE: Cavity closure strip, positioned to give a 15mm Min drip edge to cladding
- (CB) CAVITY BATTEN: 45x20 KLC Generation II, MicroPro H3.2 FJ Cavity Batten to form a 20mm cavity

- (FT1) FLASHING TAPE: Flashing tape over wrap 70mm (50 min) turn-down required in corners only. Refer to Fig. 72 of NZBC E2/AS1
- (FT2) FLEXIBLE FLASHING TAPE: Flexible flashing tape lapped over aluminium head flashing or 2nd layer of Building Wrap to taped joint or top of frame
- (TF) TIMBER FRAME: H1.2 min treated timber framing
- (WB) WEATHER BOARD: KLC Generation II, MicroPro H3.2 Bevel Back Weatherboard, Profile to NZS 3617
- (IN) INSULATION: Selected Insulation
- (HF) HEAD FLASHING: Aluminium head flashing with minimum 15 degree fall and optional hemmed edges as per table 7 E2/AS1
- (TP) TIMBER PACKER: MicroPro H3.2 Treated Packer

- (SS) SILL SCRIBER: MicroPro H3.2, Horizontal batten under window as necessary to suit profile, sealant to back of sill scriber
- (WL) WINDOW LINER: As Specified (We Recommend MicroPro H3.2 Liners & Sills)
- (WH) WEATHERHEAD: MicroPro H3.2, Horizontal batten above window as necessary to suit profile, shaped to shed water, sealant to back of head scriber
- (WZ) WANZ SUPPORT: Provide window support as required by joinery manufacturer
- (WS) WINDOW SCRIBER: KLC Generation II, MicroPro H3.2 profile cut to fit weatherboard, sealant to back of scriber and 75 x 3.15mm Galvanised nail in 3mm predrilled hole. 40x18 or 65x18 depending on weatherboard size



MicroPro® Wood Treatment Technology

- KLC use the MicroPro Micronized Copper Azole (MCA) based preservative system for their wood products. It accounts for 80% of wood treated in the US for domestic applications.
- Micronized Copper Azole (MCA) preservatives are EPA-approved for use in NZ and AUS to NZS3640:2003 and AS1604:12012
- MicroPro preservative is applied using high-pressure and vacuum-pressure in the impregnation process in KLC's modern, automated treatment facility.
- Cut End Treatment: All cut ends surfaces are to be double coated and sealed before fixing. With a alkyl (oil based) primer
- MicroPro preservative solution has benefits of reduced corrosivity. Use Hot Dip Galvanised Fasteners & Stainless Steel fasteners. MicroPro may be placed in direct contact with Aluminium Building products in interior applications, and above ground exterior applications that provide proper water drainage.
- MicroPro® is the first wood treatment process to be EPP (Environmentally Preferable Product) certified by Scientific Certification Systems based on a life cycle assessment.
- MicroPro® is environmentally sustainable, is low leaching, low VOC emissions and the award of the GREENGUARD Children and Schools Certification from the Greenguard® Environmental Institute.
- MicroPro® Wood Treatment Technology has received a Global GreenTag GreenRate™ Level A this declaration is 'Fit-for-Purpose' and confirmed for Green Building compliance.
- MicroPro® Wood Treatment Technology has received GreenTag PhD™ proving claims that MicroPro® is safe for human health (and ecosystems).

CAD REF : KLC CF20 BB10-15 - WINDOW DETAILS.dwg

DATE : 11/10/2020



www.klc.co.nz
DETAILS MAY BE SUBJECT
TO CHANGE WITHOUT NOTICE
COPYRIGHT © "KLC LIMITED" ALL RIGHTS ASSERTED

Generation II H3.2 Exterior Cladding Systems Bevel Back Weatherboard - Cavity Fix

NAME Window Head Detail - Aluminium Joinery



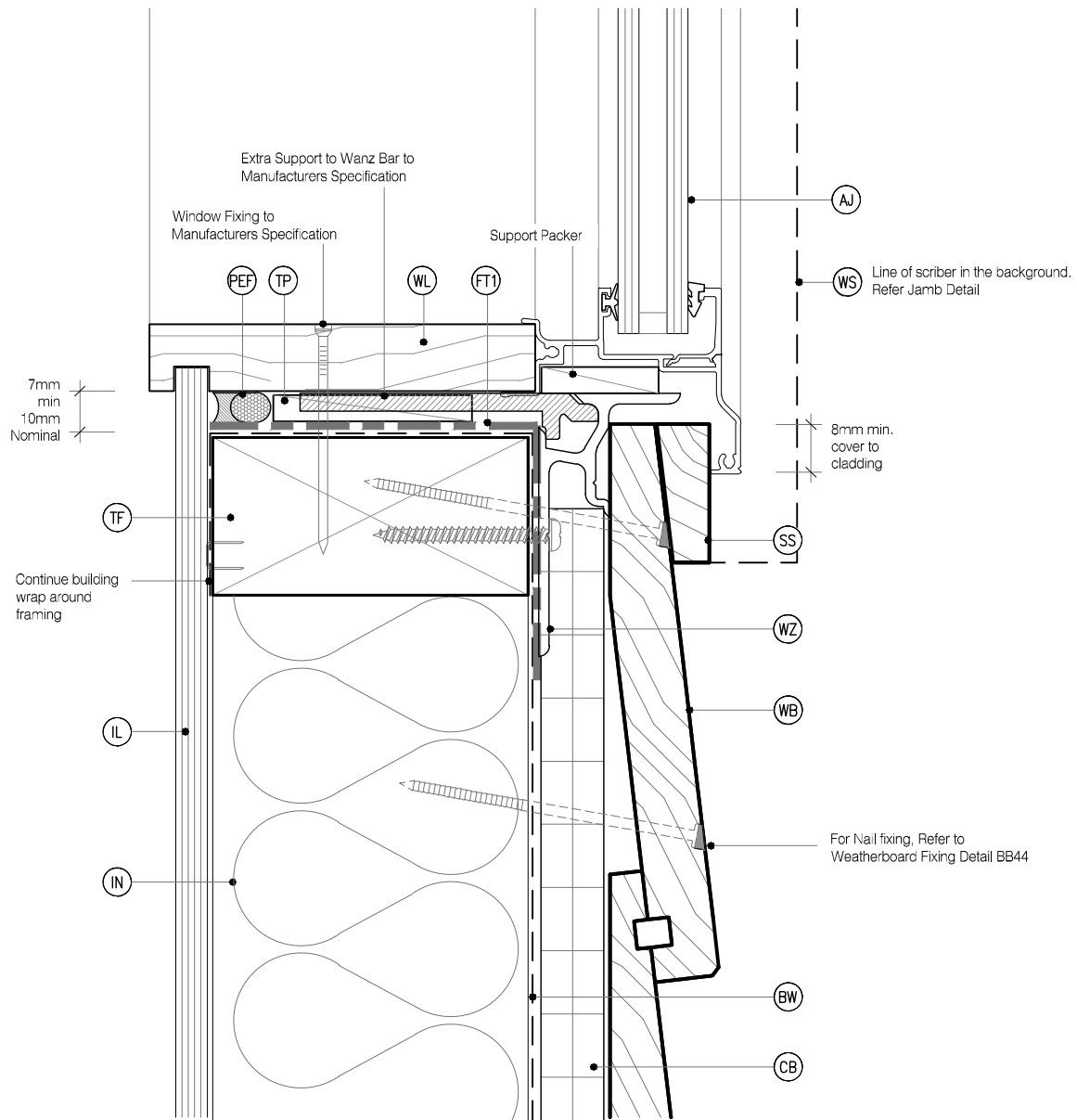
DRAWING SCALE
1:2 @ A4

ISSUE DATE
26/03/2019

DRAWING No KLC CF20 BB10 REVISION 1

LEGEND :

PEF PEF ROD BACKING: Foam backing rod with sealant to cavity in Window perimeter that forms a waterproof air-seal. (Sealant 2:1 Ratio)	FT1 FLASHING TAPE: Flashing tape over wrap 70mm (50 min) turn-down required in corners only. Refer to Fig. 72 of NZBC E2/AS1	SS SILL SCRIBER: MicroPro H3.2, Horizontal batten under window as necessary to suit profile, sealant to back of sill scriber
AJ ALUMINIUM JOINERY: Selected double glazed aluminium joinery	FT2 FLEXIBLE FLASHING TAPE: Flexible flashing tape lapped over aluminium head flashing or 2nd layer of Building Wrap to taped joint or top of frame	WL WINDOW LINER: As Specified (We Recommend MicroPro H3.2 Liners & Sills)
IL INTERNAL LINING: Selected Internal Lining	TF TIMBER FRAME: H1.2 min treated timber framing	WH WEATHERHEAD: MicroPro H3.2, Horizontal batten above window as necessary to suit profile, shaped to shed water, sealant to back of head scriber
BW BUILDING WRAP: Flexible Wall Underlay, As per NZBC E2/AS1 - Table 23, In extra high wind zones, Rigid Underlay required (9.1.7.2 E2/AS1)	WB WEATHER BOARD: KLC Generation II, MicroPro H3.2 Bevel Back Weatherboard, Profile to NZS 3617	WZ WANZ SUPPORT: Provide window support as required by joinery manufacturer
CC CAVITY CLOSURE: Cavity closure strip, positioned to give a 15mm Min drip edge to cladding	IN INSULATION: Selected Insulation	WS WINDOW SCRIBER: KLC Generation II, MicroPro H3.2 profile cut to fit weatherboard, sealant to back of scriber and 75 x 3.15mm Galvanised nail in 3mm predrilled hole. 40x18 or 65x18 depending on weatherboard size
CB CAVITY BATTEN: 45x20 KLC Generation II, MicroPro H3.2 FJ Cavity Batten to form a 20mm cavity	HF HEAD FLASHING: Aluminium head flashing with minimum 15 degree fall and optional hemmed edges as per table 7 E2/AS1	
	TP TIMBER PACKER: MicroPro H3.2 Treated Packer	



MicroPro® Wood Treatment Technology

- KLC use the MicroPro Micronized Copper Azole (MCA) based preservative system for their wood products. It accounts for 80% of wood treated in the US for domestic applications.
- Micronized Copper Azole (MCA) preservatives are EPA-approved for use in NZ and AUS to NZS3640:2003 and AS1604:12012
- MicroPro preservative is applied using high-pressure and vacuum-pressure in the impregnation process in KLC's modern, automated treatment facility.
- Cut End Treatment: All cut ends surfaces are to be double coated and sealed before fixing. With a alkylid (oil based) primer
- MicroPro preservative solution has benefits of reduced corrosivity. Use Hot Dip Galvanised Fasteners & Stainless Steel fasteners. MicroPro may be placed in direct contact with Aluminium Building products in interior applications, and above ground exterior applications that provide proper water drainage.
- MicroPro® is the first wood treatment process to be EPP (Environmentally Preferable Product) certified by Scientific Certification Systems based on a life cycle assessment.
- MicroPro® is environmentally sustainable, is low leaching, low VOC emissions and the award of the GREENGUARD Children and Schools' Certification from the Greenguard® Environmental Institute.
- MicroPro® Wood Treatment Technology has received a Global GreenTag GreenRate™ Level A this declaration is 'Fit-for-Purpose' and confirmed for Green Building compliance.
- MicroPro® Wood Treatment Technology has received GreenTag PhD™ proving claims that MicroPro® is safe for human health (and ecosystems).

CAD REF : KLC CF20 BB10-15 - WINDOW DETAILS.dwg

DATE : 11/10/2020



www.klc.co.nz
DETAILS MAY BE SUBJECT
TO CHANGE WITHOUT NOTICE
COPYRIGHT © "KLC LIMITED" ALL RIGHTS ASSERTED

TYPE **Generation II H3.2 Exterior Cladding Systems**
Bevel Back Weatherboard - Cavity Fix

NAME **Window Sill Detail - Aluminium Joinery**



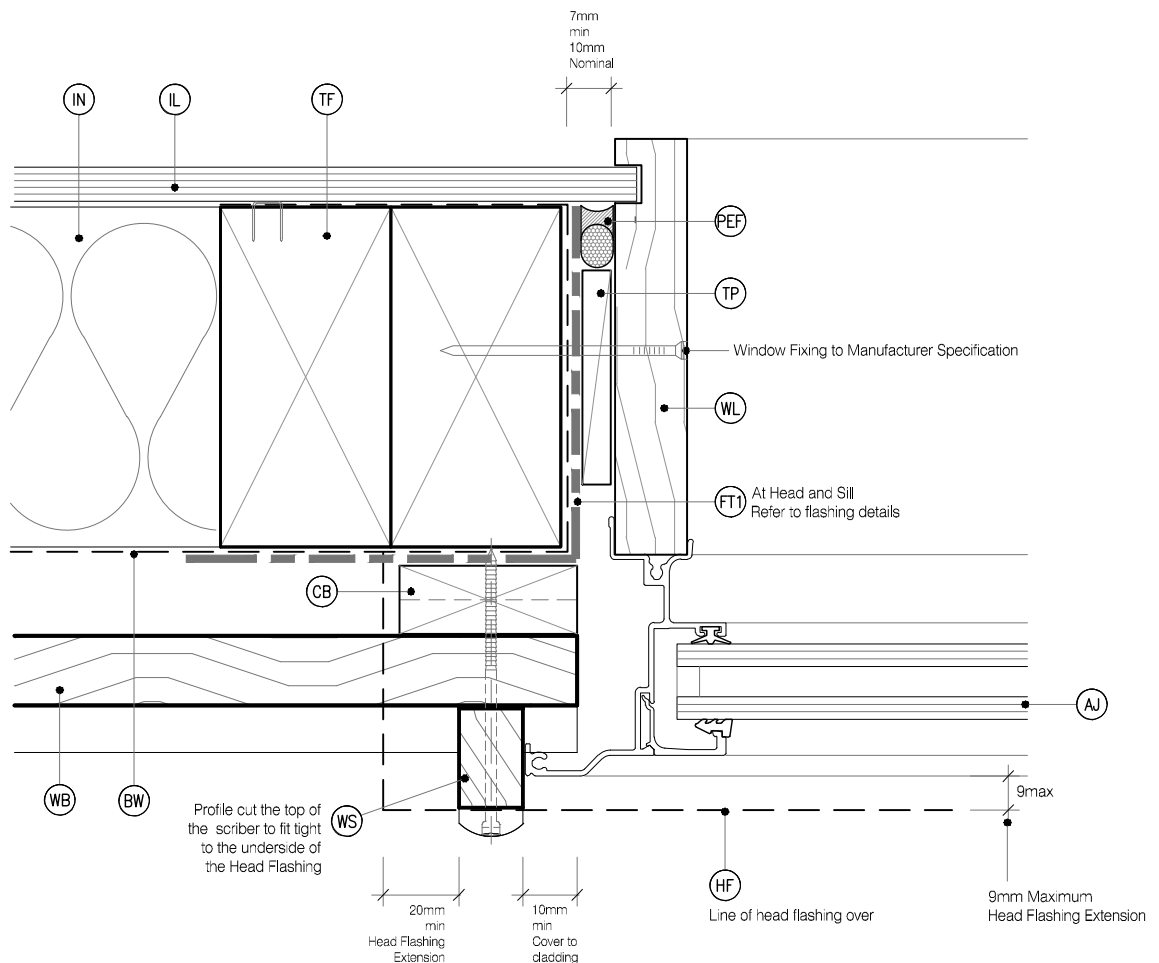
DRAWING SCALE
1:2 @ A4

ISSUE DATE
26/03/2019

DRAWING No **KLC CF20 BB11** REVISION **1**

LEGEND :

PEF PEF ROD BACKING: Foam backing rod with sealant to cavity in Window perimeter that forms a waterproof air-seal. (Sealant 2:1 Ratio)	FT1 FLASHING TAPE: Flashing tape over wrap 70mm (50 min) turn-down required in corners only. Refer to Fig. 72 of NZBC E2/AS1	SS SILL SCRIBER: MicroPro H3.2, Horizontal batten under window as necessary to suit profile, sealant to back of sill scriber
AJ ALUMINIUM JOINERY: Selected double glazed aluminium joinery	FT2 FLEXIBLE FLASHING TAPE: Flexible flashing tape lapped over aluminium head flashing or 2nd layer of Building Wrap to taped joint or top of frame	WL WINDOW LINER: As Specified (We Recommend MicroPro H3.2 Liners & Sills)
IL INTERNAL LINING: Selected Internal Lining	TF TIMBER FRAME: H:1.2 min treated timber framing	WH WEATHERHEAD: MicroPro H3.2, Horizontal batten above window as necessary to suit profile, shaped to shed water, sealant to back of head scriber
BW BUILDING WRAP: Flexible Wall Underlay, As per NZBC E2/AS1 - Table 23, In extra high wind zones, Rigid Underlay required (9.1.7.2 E2/AS1)	WB WEATHER BOARD: KLC Generation II, MicroPro H3.2 Bevel Back Weatherboard, Profile to NZS 3617	WZ WANZ SUPPORT: Provide window support as required by joinery manufacturer
CC CAVITY CLOSURE: Cavity closure strip, positioned to give a 15mm Min drip edge to cladding	IN INSULATION: Selected Insulation	WS WINDOW SCRIBER: KLC Generation II, MicroPro H3.2 profile cut to fit weatherboard, sealant to back of scriber and 75 x 3.15mm Galvanised nail in 3mm predrilled hole. 40x18 or 65x18 depending on weatherboard size
CB CAVITY BATTEN: 45x20 KLC Generation II, MicroPro H3.2 FJ Cavity Batten to form a 20mm cavity	HF HEAD FLASHING: Aluminium head flashing with minimum 15 degree fall and optional hemmed edges as per table 7 E2/AS1	
	TP TIMBER PACKER: MicroPro H3.2 Treated Packer	



MicroPro® Wood Treatment Technology

- KLC use the MicroPro Micronized Copper Azole (MCA) based preservative system for their wood products. It accounts for 80% of wood treated in the US for domestic applications.
- Micronized Copper Azole (MCA) preservatives are EPA-approved for use in NZ and AUS to NZS3640:2003 and AS1604:12012
- MicroPro preservative is applied using high-pressure and vacuum-pressure in the impregnation process in KLC's modern, automated treatment facility.
- Cut End Treatment: All cut ends surfaces are to be double coated and sealed before fixing. With a alkyl (oil based) primer
- MicroPro preservative solution has benefits of reduced corrosivity. Use Hot Dip Galvanised Fasteners & Stainless Steel fasteners. MicroPro may be placed in direct contact with Aluminium Building products in interior applications, and above ground exterior applications that provide proper water drainage.
- MicroPro® is the first wood treatment process to be EPP (Environmentally Preferable Product) certified by Scientific Certification Systems based on a life cycle assessment.
- MicroPro® is environmentally sustainable, is low leaching, low VOC emissions and the award of the GREENGUARD Children and Schools Certification from the Greenguard® Environmental Institute.
- MicroPro® Wood Treatment Technology has received a Global GreenTag GreenRate™ Level A this declaration is 'Fit-for-Purpose' and confirmed for Green Building compliance.
- MicroPro® Wood Treatment Technology has received GreenTag PhD™ proving claims that MicroPro® is safe for human health (and ecosystems).

CAD REF : KLC CF20 BB10-15 - WINDOW DETAILS.dwg
DATE : 11/10/2020



www.klc.co.nz
DETAILS MAY BE SUBJECT
TO CHANGE WITHOUT NOTICE
COPYRIGHT © KLC LIMITED ALL RIGHTS ASSERTED

TYPE **Generation II H3.2 Exterior Cladding Systems**
Bevel Back Weatherboard - Cavity Fix

NAME **Window Jamb Detail - Aluminium Joinery**



DRAWING SCALE
1:2 @ A4

ISSUE DATE
26/03/2019

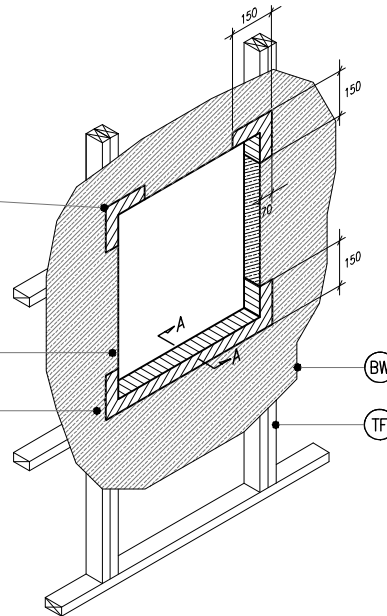
DRAWING No **KLC CF20 BB12** REVISION **1**

(FT1) ONE PIECE HEAD FLASHING TAPE, TO BUILDING WRAP

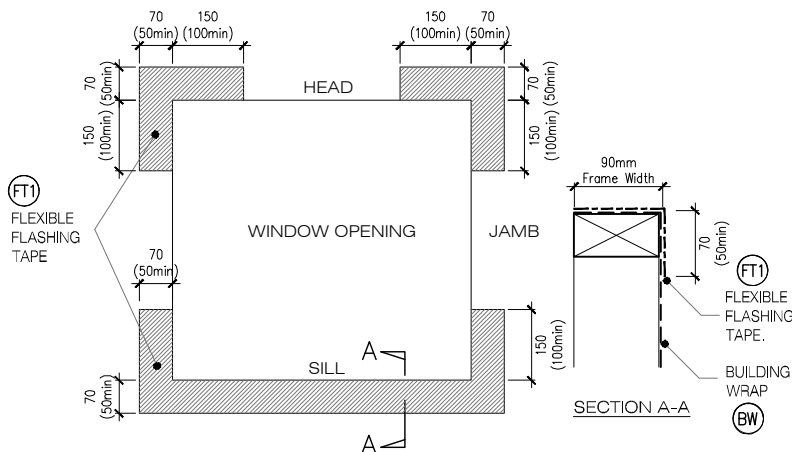
(BW) BUILDING WRAP (ALLOW TOP LAP INTO OPENING)

(FT1) ONE PIECE SILL FLASHING TAPE, TO BUILDING WRAP

BUILDING WRAP DRESSED INTO THE FRAMED OPENING WITH FLEXIBLE FLASHING TAPE LAPPED OVER AND TURNED DOWN OVER BUILDING WRAP 70mm



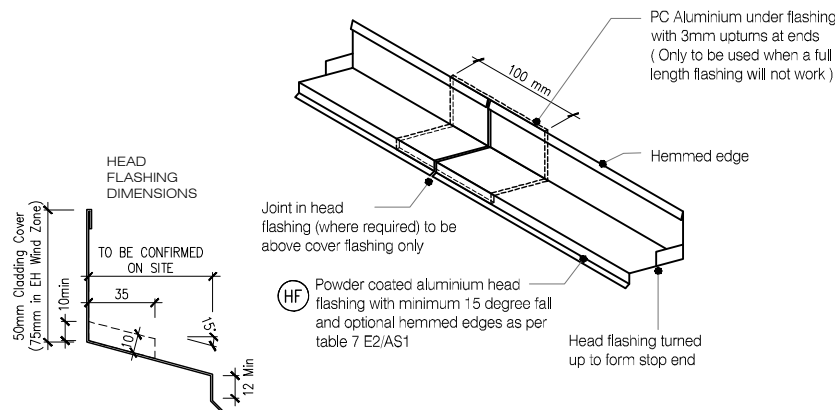
(W4) TYPICAL WINDOW OPENING (FLASHING TAPE)
BB13 SCALE : N.T.S



MicoPro® Wood Treatment Technology

1. KLC use the MicroPro Micronized Copper Azole (MCA) based preservative system for their wood products. It accounts for 80% of wood treated in the US for domestic applications
2. Micronized Copper Azole (MCA) preservatives are EPA-approved for use in NZ and AUS to NZS3640:2003 and AS1604.12012
3. MicroPro preservative is applied using high-pressure and vacuum-pressure in the impregnation process in KLC's modern, automated treatment facility.
4. Cut End Treatment : All cut ends surfaces are to be double coated and sealed before fixing. With a alkylid (oil based) primer
5. MicroPro preservative solution has benefits of reduced corrosivity. Use Hot Dip Galvanised Fasteners & Stainless Steel fasteners. MicroPro may be placed in direct contact with Aluminium Building products in interior applications, and above ground exterior applications that provide proper water drainage
6. MicroPro® is the first wood treatment process to be EPP (Environmentally Preferable Product) certified by Scientific Certification Systems based on a life cycle assessment.
7. **MicroPro® is environmentally sustainable, is low leaching, low VOC** emissions and the award of the GREENGUARD Children and Schools' Certification from the Greenguard® Environmental Institute.
8. MicroPro® Wood Treatment Technology has received a Global GreenTag GreenRate™ Level A this declaration is 'Fit-for-Purpose' and confirmed for Green Building compliance.
9. MicroPro® Wood Treatment Technology has received GreenTag PhD™ proving claims that MicroPro® is safe for human health (and ecosystems).

(W5) FLEXIBLE BUILDING WRAP AT OPENING
BB13 SCALE : 1 / 5 @ A1, 1 / 10 @ A3



ONE PIECE PC ALUMINIUM HEAD FLASHING 15° SLOPE WITH 10mm min COVER TO JOINERY EXTEND 30mm min EITHER SIDE OF JOINERY WITH STOP ENDS

(W6) TYPICAL HEAD & FLASHING JOINT
BB13 SCALE : 1 / 2 @ A1, 1 / 4 @ A3