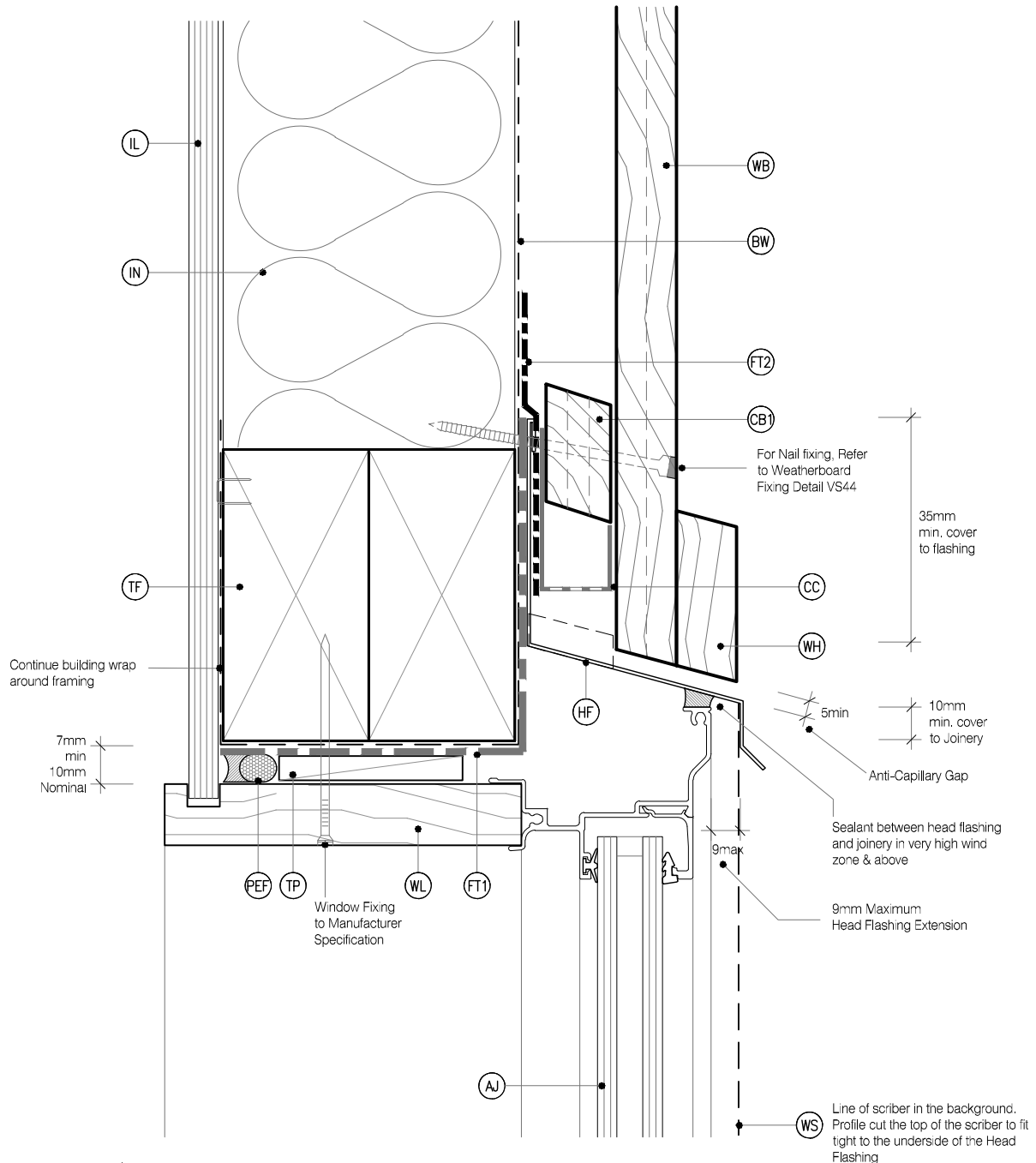


## LEGEND :

|            |  |            |   |           |  |
|------------|--|------------|---|-----------|--|
| <b>PEF</b> | PEF ROD BACKING: Foam backing rod with sealant to cavity in Window perimeter that forms a waterproof air-seal. ( Sealant 2:1 Ratio )       | <b>CB2</b> | CAVITY BATTEN, VERTICAL: 45x20 KLC Generation II, MicroPro H3.2 F.J. To form a 20mm cavity  | <b>WL</b> | WINDOW LINER: As Specified ( We Recommend MicroPro H3.2 Liners & Sills )   |
| <b>AJ</b>  | ALUMINIUM JOINERY: Selected double glazed aluminium joinery  | <b>TF</b>  | TIMBER FRAME: H1.2 min treated timber framing   | <b>WH</b> | WEATHERHEAD: ( OPTIONAL ) MicroPro H3.2, Horizontal batten above window as necessary to suit profile, shaped to shed water, sealant to back of head scribe |
| <b>IL</b>  | INTERNAL LINING: Selected Internal Lining  | <b>FT1</b> | FLASHING TAPE: Flashing tape over wrap 70mm (50 min) turn-down required in corners only. Refer to Fig. 72 of NZBC E2/AS1                        | <b>WZ</b> | WANZ SUPPORT: Provide window support as required by joinery manufacturer   |
| <b>BW</b>  | BUILDING WRAP: Flexible Wall Underlay, As per NZBC E2/AS1 - Table 23, In extra high wind zones, Rigid Underlay required ( 9.1.7.2 E2/AS1 ) | <b>FT2</b> | FLEXIBLE FLASHING TAPE: Flexible flashing tape lapped over aluminium head flashing or 2nd layer of Building Wrap to taped joint or top of frame | <b>WS</b> | WINDOW SCRIBER: KLC Generation II, MicroPro H3.2, sealant to back of scribe and 75 x 3.15mm Galvanised nail in 3mm predrilled hole.                        |
| <b>CC</b>  | CAVITY CLOSURE: Cavity closure strip, positioned to give a 15mm Min drip edge to cladding  | <b>IN</b>  | INSULATION: Selected Insulation   | <b>WB</b> | WEATHER BOARD: KLC Generation II, MicroPro H3.2 Vertical Shiplap WB. Profile to NZS 3617   |
| <b>CB1</b> | CAVITY BATTEN, HORIZONTAL: 45x20 Castellated with a 18 degree bevelled slope. MicroPro H3.2 F.J. To form a 20mm cavity                     | <b>HF</b>  | HEAD FLASHING: Aluminium head flashing with minimum 15 degree fall and optional hemmed edges as per table 7 E2/AS1                              |           |  |
|            |  | <b>TP</b>  | TIMBER PACKER: MicroPro H3.2 Treated Packer   |           |  |



### MicroPro® Wood Treatment Technology

- KLC use the MicroPro Micronized Copper Azole (MCA) based preservative system for their wood products. It accounts for 80% of wood treated in the US for domestic applications.
- Micronized Copper Azole (MCA) preservatives are EPA-approved for use in NZ and AUS to NZS3640:2003 and AS1604:12012
- MicroPro preservative is applied using high-pressure and vacuum-pressure in the impregnation process in KLC's modern, automated treatment facility.
- Cut End Treatment: All cut ends surfaces are to be double coated and sealed before fixing. With a alkyl (oil based) primer
- MicroPro preservative solution has benefits of reduced corrosivity. Use Hot Dip Galvanised Fasteners & Stainless Steel fasteners. MicroPro may be placed in direct contact with Aluminium Building products in interior applications, and above ground exterior applications that provide proper water drainage.
- MicroPro® is the first wood treatment process to be EPP (Environmentally Preferable Product) certified by Scientific Certification Systems based on a life cycle assessment.
- MicroPro® is environmentally sustainable, is low leaching, low VOC emissions and the award of the GREENGUARD Children and Schools Certification from the Greenguard® Environmental Institute.
- MicroPro® Wood Treatment Technology has received a Global GreenTag GreenRate™ Level A this declaration is 'Fit-for-Purpose' and confirmed for Green Building compliance.
- MicroPro® Wood Treatment Technology has received GreenTag PhD™ proving claims that MicroPro® is safe for human health (and ecosystems).

CAD REF : KLC CF20 VS10-15 - WINDOW DETAILS.dwg  
DATE : 26/10/2018



**www.klc.co.nz**  
DETAILS MAY BE SUBJECT  
TO CHANGE WITHOUT NOTICE  
COPYRIGHT © "KLC LIMITED" ALL RIGHTS ASSERTED

TYPE **Generation II H3.2 Exterior Cladding Systems**  
**Vertical Shiplap WB - Cavity Fix**

NAME **Window Head Detail - Aluminium Joinery**



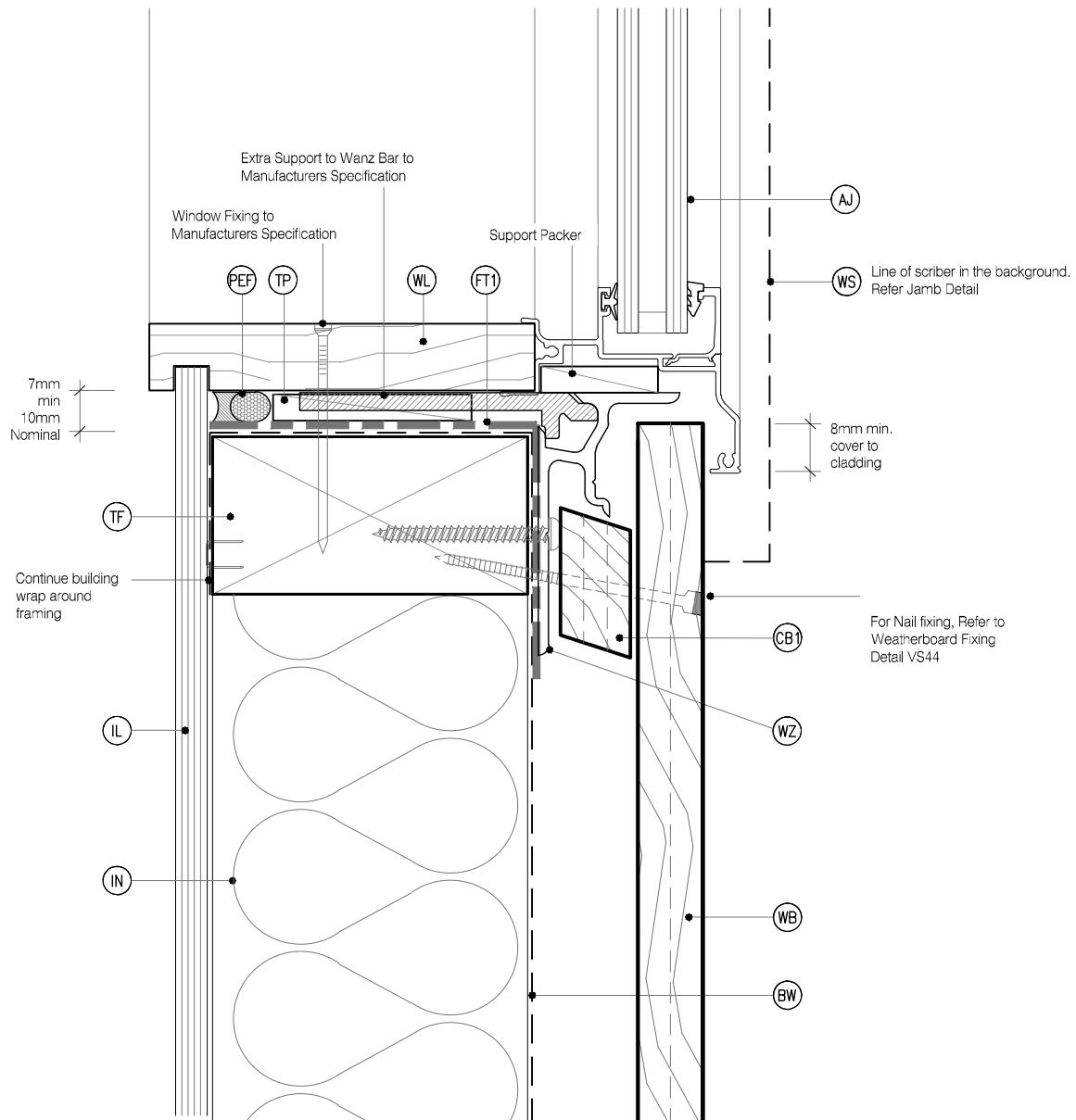
DRAWING SCALE  
1:2 @ A4

ISSUE DATE  
26/10/2018

DRAWING No **KLC CF20 VS10** REVISION

## LEGEND :

|            |  |            |   |           |   |
|------------|--|------------|---|-----------|---|
| <b>PEF</b> | PEF ROD BACKING: Foam backing rod with sealant to cavity in Window perimeter that forms a waterproof air-seal. ( Sealant 2:1 Ratio )       | <b>CB2</b> | CAVITY BATTEN, VERTICAL: 45x20 KLC Generation II, MicroPro H3.2 F.J. To form a 20mm cavity  | <b>WL</b> | WINDOW LINER: As Specified ( We Recommend MicroPro H3.2 Liners & Sills )  |
| <b>AJ</b>  | ALUMINIUM JOINERY: Selected double glazed aluminium joinery  | <b>TF</b>  | TIMBER FRAME: H1.2 min treated timber framing   | <b>WH</b> | WEATHERHEAD: ( OPTIONAL ) MicroPro H3.2, Horizontal batten above window as necessary to suit profile, shaped to shed water, sealant to back of head scriber |
| <b>IL</b>  | INTERNAL LINING: Selected Internal Lining  | <b>FT1</b> | FLASHING TAPE: Flashing tape over wrap 70mm (50 min) turn-down required in corners only. Refer to Fig. 72 of NZBC E2/AS1                        | <b>WZ</b> | WANZ SUPPORT: Provide window support as required by joinery manufacturer  |
| <b>BW</b>  | BUILDING WRAP: Flexible Wall Underlay, As per NZBC E2/AS1 - Table 23, In extra high wind zones, Rigid Underlay required ( 9.1.7.2 E2/AS1 ) | <b>FT2</b> | FLEXIBLE FLASHING TAPE: Flexible flashing tape lapped over aluminium head flashing or 2nd layer of Building Wrap to taped joint or top of frame | <b>WS</b> | WINDOW SCRIBER: KLC Generation II, MicroPro H3.2, sealant to back of scriber and 75 x 3.15mm Galvanised nail in 3mm predrilled hole.                        |
| <b>CC</b>  | CAVITY CLOSURE: Cavity closure strip, positioned to give a 15mm Min drip edge to cladding  | <b>IN</b>  | INSULATION: Selected Insulation   | <b>WB</b> | WEATHER BOARD: KLC Generation II, MicroPro H3.2 Vertical Shiplap WB. Profile to NZS 3617  |
| <b>CB1</b> | CAVITY BATTEN, HORIZONTAL: 45x20 Castellated with a 18 degree bevelled slope. MicroPro H3.2 F.J. To form a 20mm cavity                     | <b>HF</b>  | HEAD FLASHING: Aluminium head flashing with minimum 15 degree fall and optional hemmed edges as per table 7 E2/AS1                              |           |   |
|            |  | <b>TP</b>  | TIMBER PACKER: MicroPro H3.2 Treated Packer   |           |   |



## MicroPro® Wood Treatment Technology

- KLC use the MicroPro Micronized Copper Azole ( MCA ) based preservative system for their wood products. It accounts for 80% of wood treated in the US for domestic applications.
- Micronized Copper Azole ( MCA ) preservatives are EPA-approved for use in NZ and AUS to NZS3640:2003 and AS1604:12012
- MicroPro preservative is applied using high-pressure and vacuum-pressure in the impregnation process in KLC's modern, automated treatment facility.
- Cut End Treatment : All cut ends surfaces are to be double coated and sealed before fixing. With a alkylid ( oil based ) primer
- MicroPro preservative solution has benefits of reduced corrosivity. Use Hot Dip Galvanised Fasteners & Stainless Steel fasteners. MicroPro may be placed in direct contact with Aluminium Building products in interior applications, and above ground exterior applications that provide proper water drainage.
- MicroPro® is the first wood treatment process to be EPP ( Environmentally Preferable Product ) certified by Scientific Certification Systems based on a life cycle assessment.
- MicroPro® is environmentally sustainable, is low leaching, low VOC emissions and the award of the GREENGUARD Children and Schools' Certification from the Greenguard® Environmental Institute.
- MicroPro® Wood Treatment Technology has received a Global GreenTag GreenRate™ Level A this declaration is 'Fit-for-Purpose' and confirmed for Green Building compliance.
- MicroPro® Wood Treatment Technology has received GreenTag PhD™ proving claims that MicroPro® is safe for human health (and ecosystems).

CAD REF :KLC CF20 VS10-15 - WINDOW DETAILS.dwg

DATE :26/10/2018



**www.klc.co.nz**  
DETAILS MAY BE SUBJECT  
TO CHANGE WITHOUT NOTICE  
COPYRIGHT © "KLC LIMITED" ALL RIGHTS ASSERTED

TYPE **Generation II H3.2 Exterior Cladding Systems**  
**Vertical Shiplap WB - Cavity Fix**

NAME **Window Sill Detail - Aluminium Joinery**



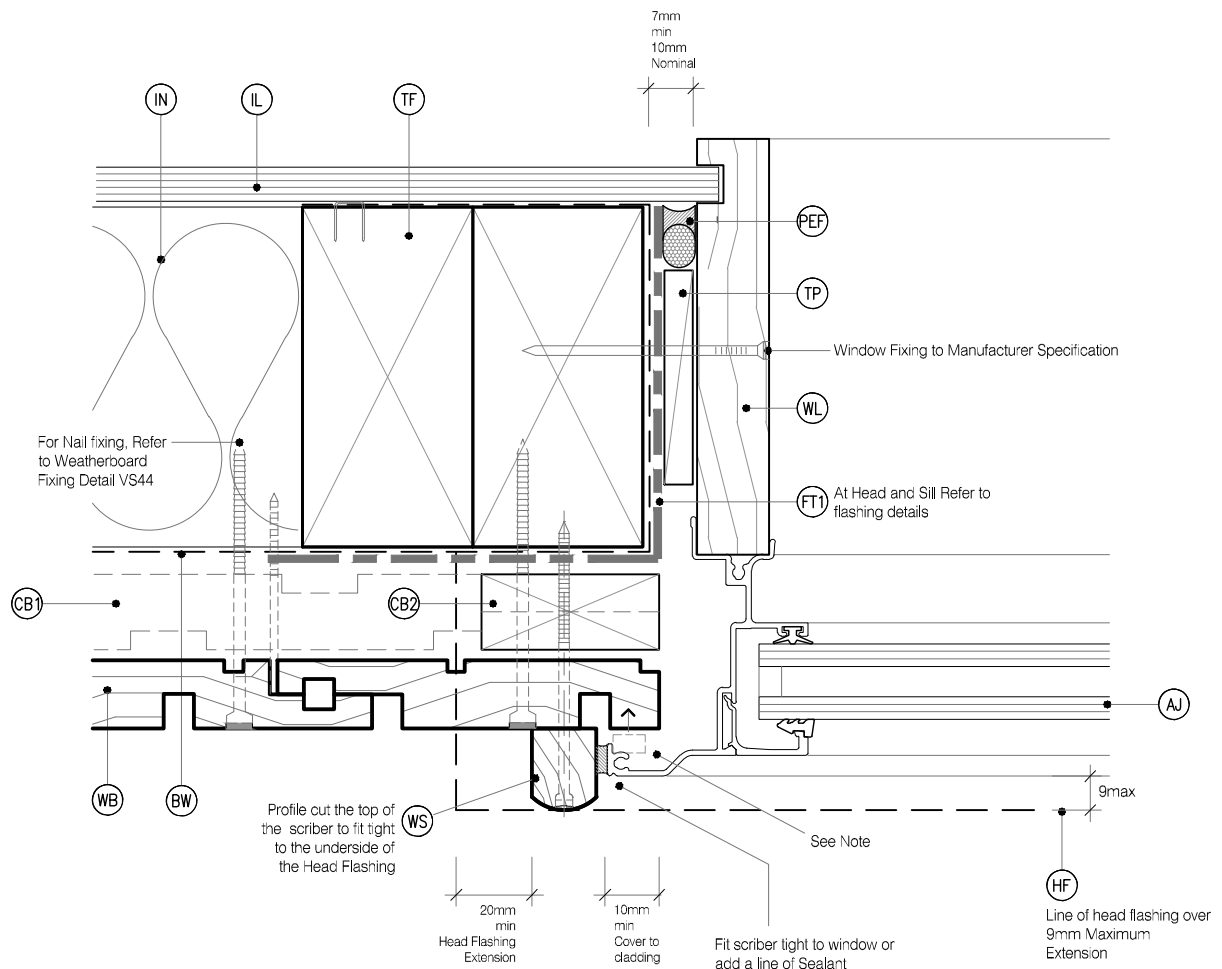
DRAWING SCALE  
1:2 @ A4

ISSUE DATE  
26/10/2018

DRAWING No **KLC CF20 VS11** REVISION

## LEGEND :

|            |  |            |   |           |  |
|------------|--|------------|---|-----------|--|
| <b>PEF</b> | PEF ROD BACKING: Foam backing rod with sealant to cavity in Window perimeter that forms a waterproof air-seal. ( Sealant 2:1 Ratio )       | <b>CB2</b> | CAVITY BATTEN, VERTICAL: 45x20 KLC Generation II, MicroPro H3.2 F.J. To form a 20mm cavity  | <b>WL</b> | WINDOW LINER: As Specified ( We Recommend MicroPro H3.2 Liners & Sills )   |
| <b>AJ</b>  | ALUMINIUM JOINERY: Selected double glazed aluminium joinery  | <b>TF</b>  | TIMBER FRAME: H1.2 min treated timber framing   | <b>WH</b> | WEATHERHEAD: ( OPTIONAL ) MicroPro H3.2, Horizontal batten above window as necessary to suit profile, shaped to shed water, sealant to back of head scribe |
| <b>IL</b>  | INTERNAL LINING: Selected Internal Lining  | <b>FT1</b> | FLASHING TAPE: Flashing tape over wrap 70mm (50 min) turn-down required in corners only. Refer to Fig. 72 of NZBC E2/AS1                        | <b>WZ</b> | WANZ SUPPORT: Provide window support as required by joinery manufacturer   |
| <b>BW</b>  | BUILDING WRAP: Flexible Wall Underlay, As per NZBC E2/AS1 - Table 23, In extra high wind zones, Rigid Underlay required ( 9.1.7.2 E2/AS1 ) | <b>FT2</b> | FLEXIBLE FLASHING TAPE: Flexible flashing tape lapped over aluminium head flashing or 2nd layer of Building Wrap to taped joint or top of frame | <b>WS</b> | WINDOW SCRIBER: KLC Generation II, MicroPro H3.2, sealant to back of scribe and 75 x 3.15mm Galvanised nail in 3mm predrilled hole.                        |
| <b>CC</b>  | CAVITY CLOSURE: Cavity closure strip, positioned to give a 15mm Min drip edge to cladding  | <b>IN</b>  | INSULATION: Selected Insulation   | <b>WB</b> | WEATHER BOARD: KLC Generation II, MicroPro H3.2 Vertical Shiplap WB. Profile to NZS 3617   |
| <b>CB1</b> | CAVITY BATTEN, HORIZONTAL: 45x20 Castellated with a 18 degree bevelled slope. MicroPro H3.2 F.J. To form a 20mm cavity                     | <b>HF</b>  | HEAD FLASHING: Aluminium head flashing with minimum 15 degree fall and optional hemmed edges as per table 7 E2/AS1                              |           |  |
|            |  | <b>TP</b>  | TIMBER PACKER: MicroPro H3.2 Treated Packer   |           |  |



### NOTE : No Scribe Option :

The Aluminium Joinery must sit hard against the back of the joinery flange and the timber weatherboards with a E.P.S Compressible bond breaker foam seal between

## MicroPro® Wood Treatment Technology

- KLC use the MicroPro Micronized Copper Azole ( MCA ) based preservative system for their wood products. It accounts for 80% of wood treated in the US for domestic applications.
- Micronized Copper Azole ( MCA ) preservatives are EPA-approved for use in NZ and AUS to NZS3640:2003 and AS1604:12012
- MicroPro preservative is applied using high-pressure and vacuum-pressure in the impregnation process in KLC's modern, automated treatment facility.
- Cut End Treatment : All cut ends surfaces are to be double coated and sealed before fixing. With a alkyl ( oil based ) primer
- MicroPro preservative solution has benefits of reduced corrosivity. Use Hot Dip Galvanised Fasteners & Stainless Steel fasteners. MicroPro may be placed in direct contact with Aluminium Building products in interior applications, and above ground exterior applications that provide proper water drainage.
- MicroPro® is the first wood treatment process to be EPP ( Environmentally Preferable Product ) certified by Scientific Certification Systems based on a life cycle assessment.
- MicroPro® is environmentally sustainable, is low leaching, low VOC emissions and the award of the GREENGUARD Children and Schools Certification from the Greenguard® Environmental Institute.
- MicroPro® Wood Treatment Technology has received a Global GreenTag GreenRate™ Level A this declaration is 'Fit-for-Purpose' and confirmed for Green Building compliance.
- MicroPro® Wood Treatment Technology has received GreenTag PhD™ proving claims that MicroPro® is safe for human health (and ecosystems).

CAD REF : KLC CF20 VS10-15 - WINDOW DETAILS.dwg

DATE : 26/10/2018



**www.klc.co.nz**  
DETAILS MAY BE SUBJECT  
TO CHANGE WITHOUT NOTICE  
COPYRIGHT © "KLC LIMITED" ALL RIGHTS ASSERTED



TYPE **Generation II H3.2 Exterior Cladding Systems**  
**Vertical Shiplap WB - Cavity Fix**

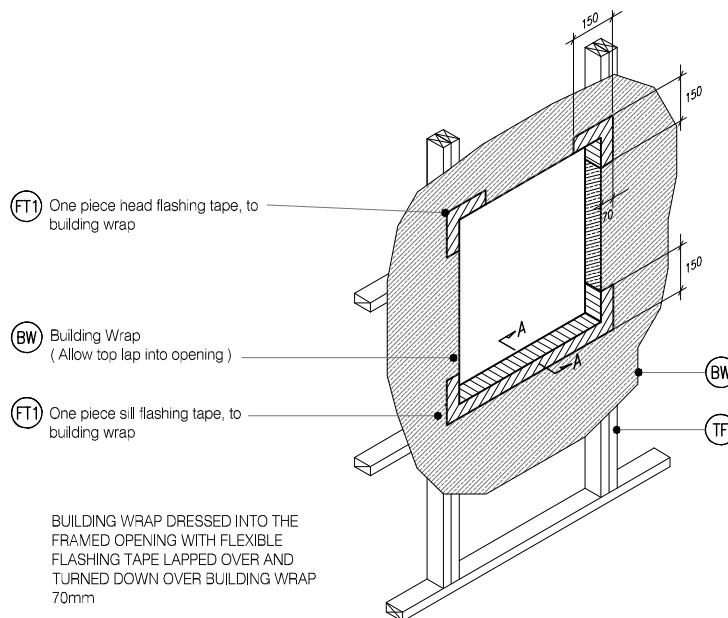
NAME **Window Jamb Detail - Aluminium Joinery**



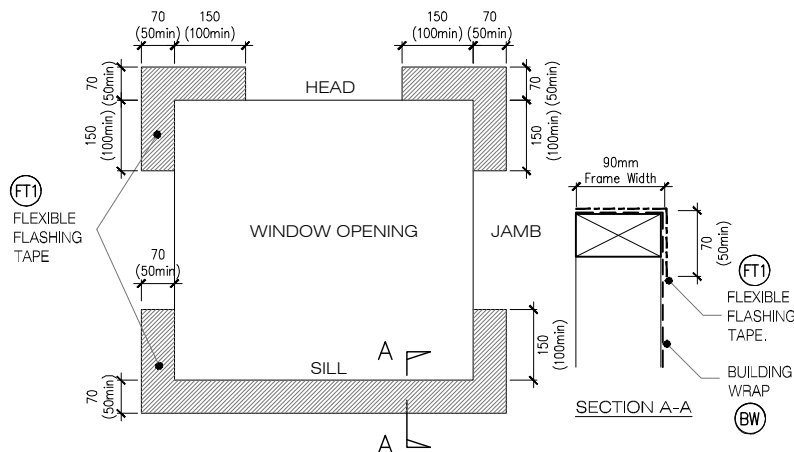
DRAWING SCALE  
1:2 @ A4

ISSUE DATE  
26/10/2018

DRAWING No **KLC CF20 VS12** REVISION



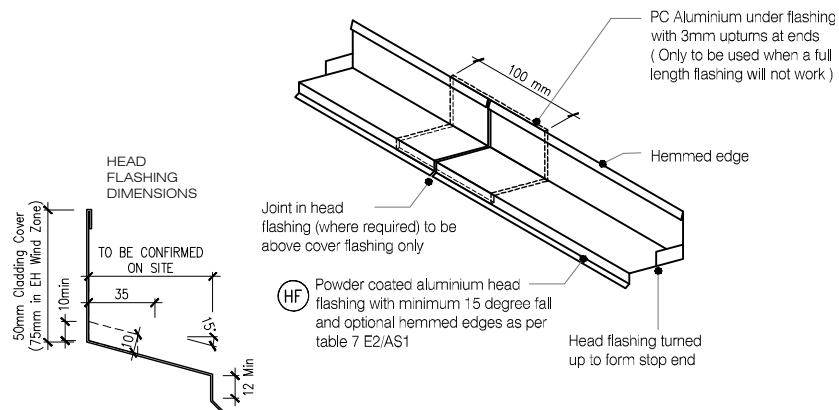
**W4** TYPICAL WINDOW OPENING ( FLASHING TAPE )  
VS13 SCALE : N.T.S



**W5** FLEXIBLE BUILDING WRAP AT OPENING  
VS13 SCALE : 1 / 5 @ A1, 1 / 10 @ A3

#### MicroPro® Wood Treatment Technology

1. KLC use the MicroPro Micronized Copper Azole ( MCA ) based preservative system for their wood products. It accounts for 80% of wood treated in the US for domestic applications
2. Micronized Copper Azole ( MCA ) preservatives are EPA-approved for use in NZ and AUS to NZS3640:2003 and AS1604:12012
3. MicroPro preservative is applied using high-pressure and vacuum-pressure in the impregnation process in KLC's modern, automated treatment facility.
4. Cut End Treatment : All cut ends surfaces are to be double coated and **sealed before fixing. With a alkylid ( oil based ) primer**
5. MicroPro preservative solution has benefits of reduced corrosivity. Use Hot Dip Galvanised Fasteners & Stainless Steel fasteners. MicroPro may be placed in direct contact with Aluminium Building products in interior applications, and above ground exterior applications that provide proper water drainage
6. MicroPro® is the first wood treatment process to be EPP ( Environmentally Preferable Product ) certified by Scientific Certification Systems based on a life cycle assessment.
7. MicroPro® is environmentally sustainable, is low leaching, low VOC emissions and the award of the GREENGUARD Children and Schools' Certification from the Greenguard® Environmental Institute.
8. MicroPro® Wood Treatment Technology has received a Global GreenTag GreenRate™ Level A this declaration is 'Fit-for-Purpose' and confirmed for Green Building compliance.
9. MicroPro® Wood Treatment Technology has received GreenTag PhD™ proving claims that MicroPro® is safe for human health (and ecosystems).



ONE PIECE PC ALUMINIUM HEAD FLASHING 15° SLOPE WITH 10mm min COVER TO JOINERY EXTEND 30mm min EITHER SIDE OF JOINERY WITH STOP ENDS

**W6** TYPICAL HEAD & FLASHING JOINT  
VS13 SCALE : 1 / 2 @ A1, 1 / 4 @ A3