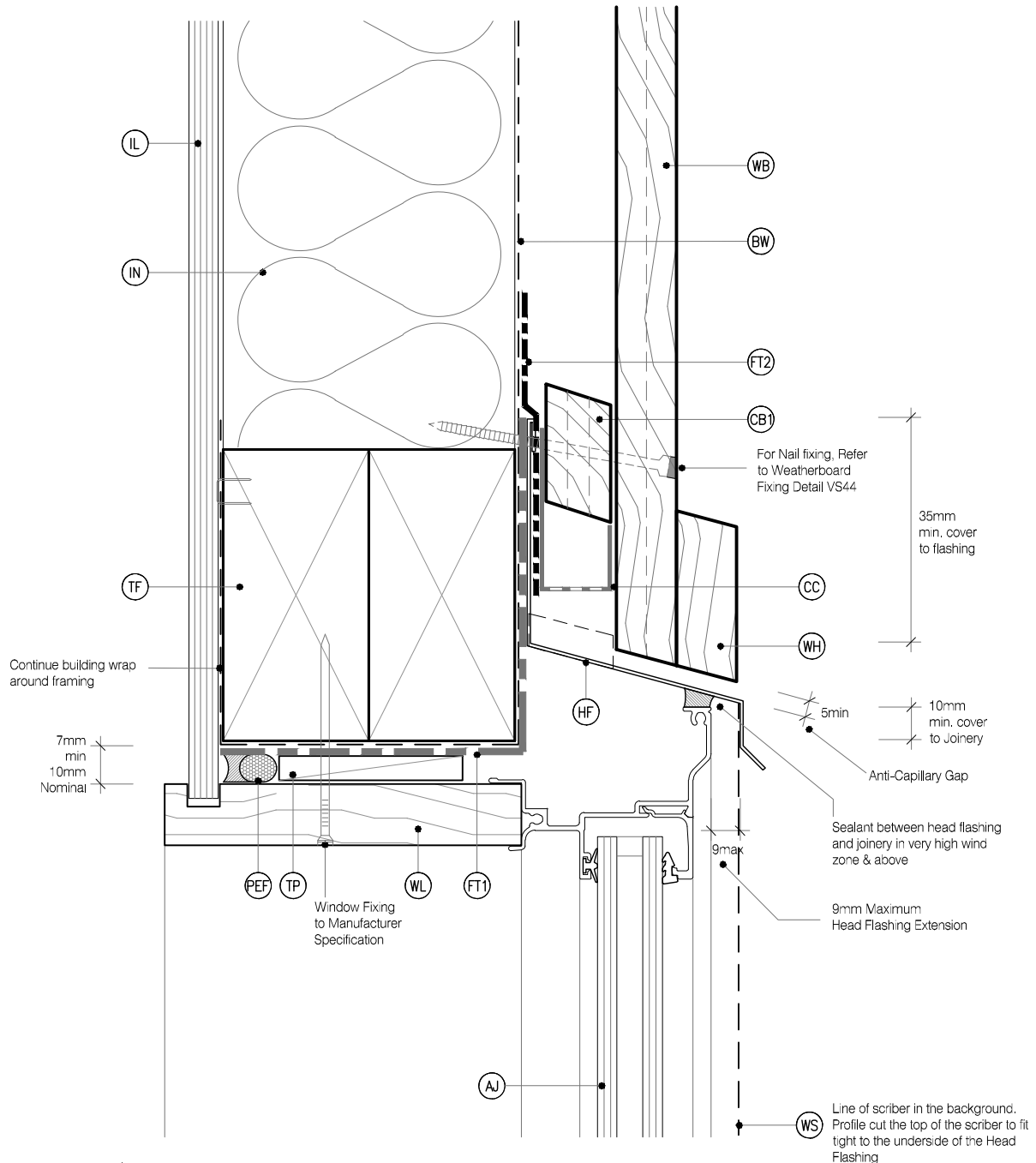


LEGEND :

PEF	PEF ROD BACKING: Foam backing rod with sealant to cavity in Window perimeter that forms a waterproof air-seal. (Sealant 2:1 Ratio)	CB2	CAVITY BATTEN, VERTICAL: 45x20 KLC Generation II, MicroPro H3.2 F.J. To form a 20mm cavity	WL	WINDOW LINER: As Specified (We Recommend MicroPro H3.2 Liners & Sills)
AJ	ALUMINIUM JOINERY: Selected double glazed aluminium joinery	TF	TIMBER FRAME: H1.2 min treated timber framing	WH	WEATHERHEAD: (OPTIONAL) MicroPro H3.2, Horizontal batten above window as necessary to suit profile, shaped to shed water, sealant to back of head scribe
IL	INTERNAL LINING: Selected Internal Lining	FT1	FLASHING TAPE: Flashing tape over wrap 70mm (50 min) turn-down required in corners only. Refer to Fig. 72 of NZBC E2/AS1	WZ	WANZ SUPPORT: Provide window support as required by joinery manufacturer
BW	BUILDING WRAP: Flexible Wall Underlay, As per NZBC E2/AS1 - Table 23, In extra high wind zones, Rigid Underlay required (9.1.7.2 E2/AS1)	FT2	FLEXIBLE FLASHING TAPE: Flexible flashing tape lapped over aluminium head flashing or 2nd layer of Building Wrap to taped joint or top of frame	WS	WINDOW SCRIBER: KLC Generation II, MicroPro H3.2, sealant to back of scribe and 75 x 3.15mm Galvanised nail in 3mm predrilled hole.
CC	CAVITY CLOSURE: Cavity closure strip, positioned to give a 15mm Min drip edge to cladding	IN	INSULATION: Selected Insulation	WB	WEATHER BOARD: KLC Generation II, MicroPro H3.2 Vertical Shiplap WB. Profile to NZS 3617
CB1	CAVITY BATTEN, HORIZONTAL: 45x20 Castellated with a 18 degree bevelled slope. MicroPro H3.2 F.J. To form a 20mm cavity	HF	HEAD FLASHING: Aluminium head flashing with minimum 15 degree fall and optional hemmed edges as per table 7 E2/AS1		
		TP	TIMBER PACKER: MicroPro H3.2 Treated Packer		



MicroPro® Wood Treatment Technology

- KLC use the MicroPro Micronized Copper Azole (MCA) based preservative system for their wood products. It accounts for 80% of wood treated in the US for domestic applications.
- Micronized Copper Azole (MCA) preservatives are EPA-approved for use in NZ and AUS to NZS3640:2003 and AS1604:12012
- MicroPro preservative is applied using high-pressure and vacuum-pressure in the impregnation process in KLC's modern, automated treatment facility.
- Cut End Treatment: All cut ends surfaces are to be double coated and sealed before fixing. With a alkyl (oil based) primer
- MicroPro preservative solution has benefits of reduced corrosivity. Use Hot Dip Galvanised Fasteners & Stainless Steel fasteners. MicroPro may be placed in direct contact with Aluminium Building products in interior applications, and above ground exterior applications that provide proper water drainage.
- MicroPro® is the first wood treatment process to be EPP (Environmentally Preferable Product) certified by Scientific Certification Systems based on a life cycle assessment.
- MicroPro® is environmentally sustainable, is low leaching, low VOC emissions and the award of the GREENGUARD Children and Schools Certification from the Greenguard® Environmental Institute.
- MicroPro® Wood Treatment Technology has received a Global GreenTag GreenRate™ Level A this declaration is 'Fit-for-Purpose' and confirmed for Green Building compliance.
- MicroPro® Wood Treatment Technology has received GreenTag PhD™ proving claims that MicroPro® is safe for human health (and ecosystems).

CAD REF : KLC CF20 VS10-15 - WINDOW DETAILS.dwg

DATE : 11/10/2020



DETAILS MAY BE SUBJECT
TO CHANGE WITHOUT NOTICE
COPYRIGHT © "KLC LIMITED" ALL RIGHTS ASSERTED

TYPE **Generation II H3.2 Exterior Cladding Systems**
Vertical Shiplap WB - Cavity Fix

NAME **Window Head Detail - Aluminium Joinery**



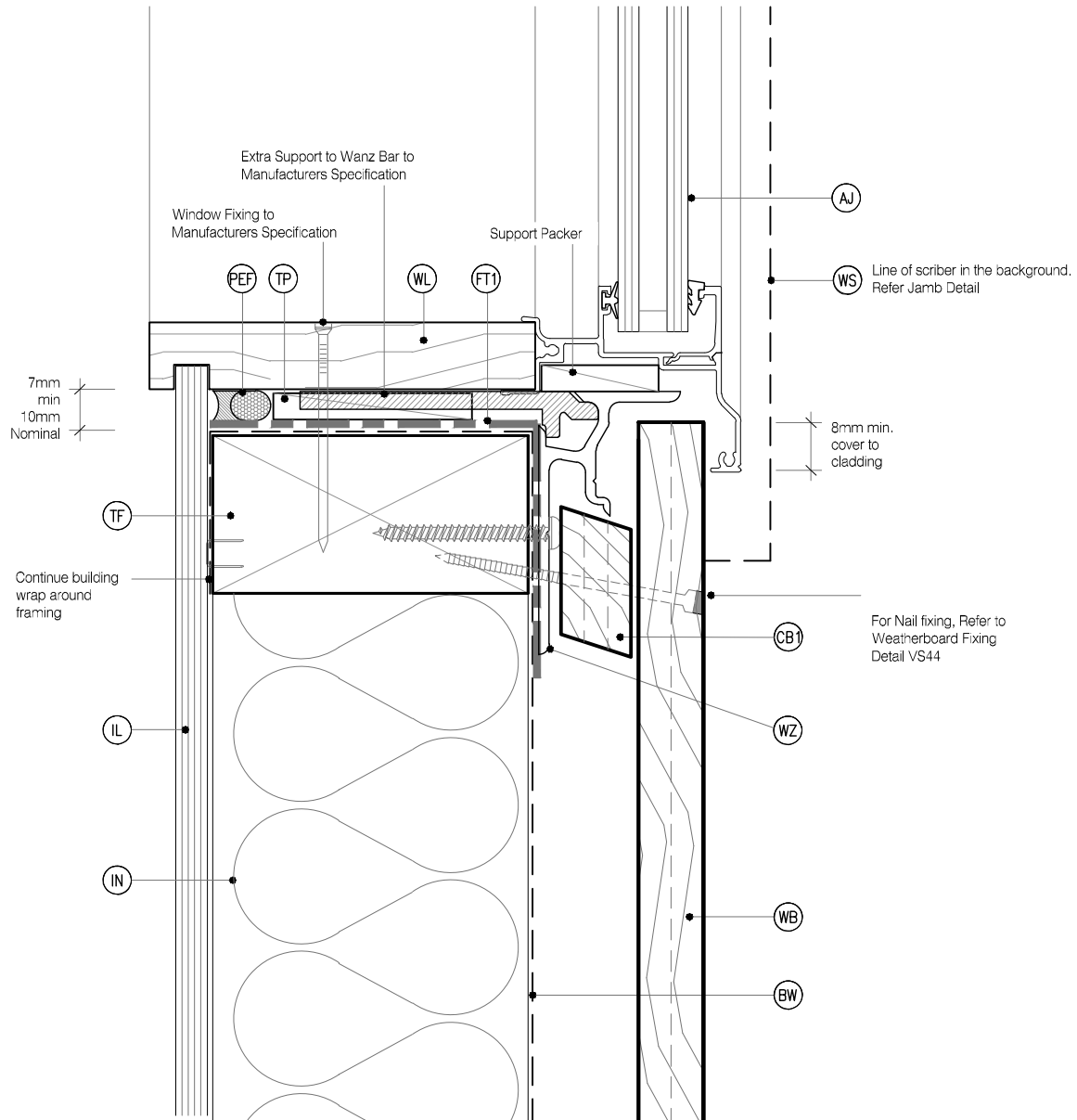
DRAWING SCALE
1:2 @ A4

ISSUE DATE
26/03/2019

DRAWING No **KLC CF20 VS10** REVISION

LEGEND :

PEF	PEF ROD BACKING: Foam backing rod with sealant to cavity in Window perimeter that forms a waterproof air-seal. (Sealant 2:1 Ratio)	CB2	CAVITY BATTEN, VERTICAL: 45x20 KLC Generation II, MicroPro H3.2 F.J. To form a 20mm cavity	WL	WINDOW LINER: As Specified (We Recommend MicroPro H3.2 Liners & Sills)
AJ	ALUMINIUM JOINERY: Selected double glazed aluminium joinery	TF	TIMBER FRAME: H1.2 min treated timber framing	WH	WEATHERHEAD: (OPTIONAL) MicroPro H3.2, Horizontal batten above window as necessary to suit profile, shaped to shed water, sealant to back of head scribe
IL	INTERNAL LINING: Selected Internal Lining	FT1	FLASHING TAPE: Flashing tape over wrap 70mm (50 min) turn-down required in corners only. Refer to Fig. 72 of NZBC E2/AS1	WZ	WANZ SUPPORT: Provide window support as required by joinery manufacturer
BW	BUILDING WRAP: Flexible Wall Underlay, As per NZBC E2/AS1 - Table 23, In extra high wind zones, Rigid Underlay required (9.1.7.2 E2/AS1)	FT2	FLEXIBLE FLASHING TAPE: Flexible flashing tape lapped over aluminium head flashing or 2nd layer of Building Wrap to taped joint or top of frame	WS	WINDOW SCRIBER: KLC Generation II, MicroPro H3.2, sealant to back of scribe and 75 x 3.15mm Galvanised nail in 3mm predrilled hole.
CC	CAVITY CLOSURE: Cavity closure strip, positioned to give a 15mm Min drip edge to cladding	IN	INSULATION: Selected Insulation	WB	WEATHER BOARD: KLC Generation II, MicroPro H3.2 Vertical Shiplap WB. Profile to NZS 3617
CB1	CAVITY BATTEN, HORIZONTAL: 45x20 Castellated with a 18 degree bevelled slope. MicroPro H3.2 F.J. To form a 20mm cavity	HF	HEAD FLASHING: Aluminium head flashing with minimum 15 degree fall and optional hemmed edges as per table 7 E2/AS1		
		TP	TIMBER PACKER: MicroPro H3.2 Treated Packer		



MicroPro® Wood Treatment Technology

- KLC use the MicroPro Micronized Copper Azole (MCA) based preservative system for their wood products. It accounts for 80% of wood treated in the US for domestic applications.
- Micronized Copper Azole (MCA) preservatives are EPA-approved for use in NZ and AUS to NZS3640:2003 and AS1604:12012
- MicroPro preservative is applied using high-pressure and vacuum-pressure in the impregnation process in KLC's modern, automated treatment facility.
- Cut End Treatment : All cut ends surfaces are to be double coated and sealed before fixing. With a alkylid (oil based) primer
- MicroPro preservative solution has benefits of reduced corrosivity. Use Hot Dip Galvanised Fasteners & Stainless Steel fasteners. MicroPro may be placed in direct contact with Aluminium Building products in interior applications, and above ground exterior applications that provide proper water drainage
- MicroPro® is the first wood treatment process to be EPP (Environmentally Preferable Product) certified by Scientific Certification Systems based on a life cycle assessment.
- MicroPro® is environmentally sustainable, is low leaching, low VOC emissions and the award of the GREENGUARD Children and Schools' Certification from the Greenguard® Environmental Institute.
- MicroPro® Wood Treatment Technology has received a Global GreenTag GreenRate™ Level A this declaration is 'Fit-for-Purpose' and confirmed for Green Building compliance.
- MicroPro® Wood Treatment Technology has received GreenTag PhD™ proving claims that MicroPro® is safe for human health (and ecosystems).

CAD REF :KLC CF20 VS10-15 - WINDOW DETAILS.dwg

DATE :11/10/2020



www.klc.co.nz
DETAILS MAY BE SUBJECT
TO CHANGE WITHOUT NOTICE
COPYRIGHT © "KLC LIMITED" ALL RIGHTS ASSERTED



TYPE **Generation II H3.2 Exterior Cladding Systems**
Vertical Shiplap WB - Cavity Fix

NAME **Window Sill Detail - Aluminium Joinery**



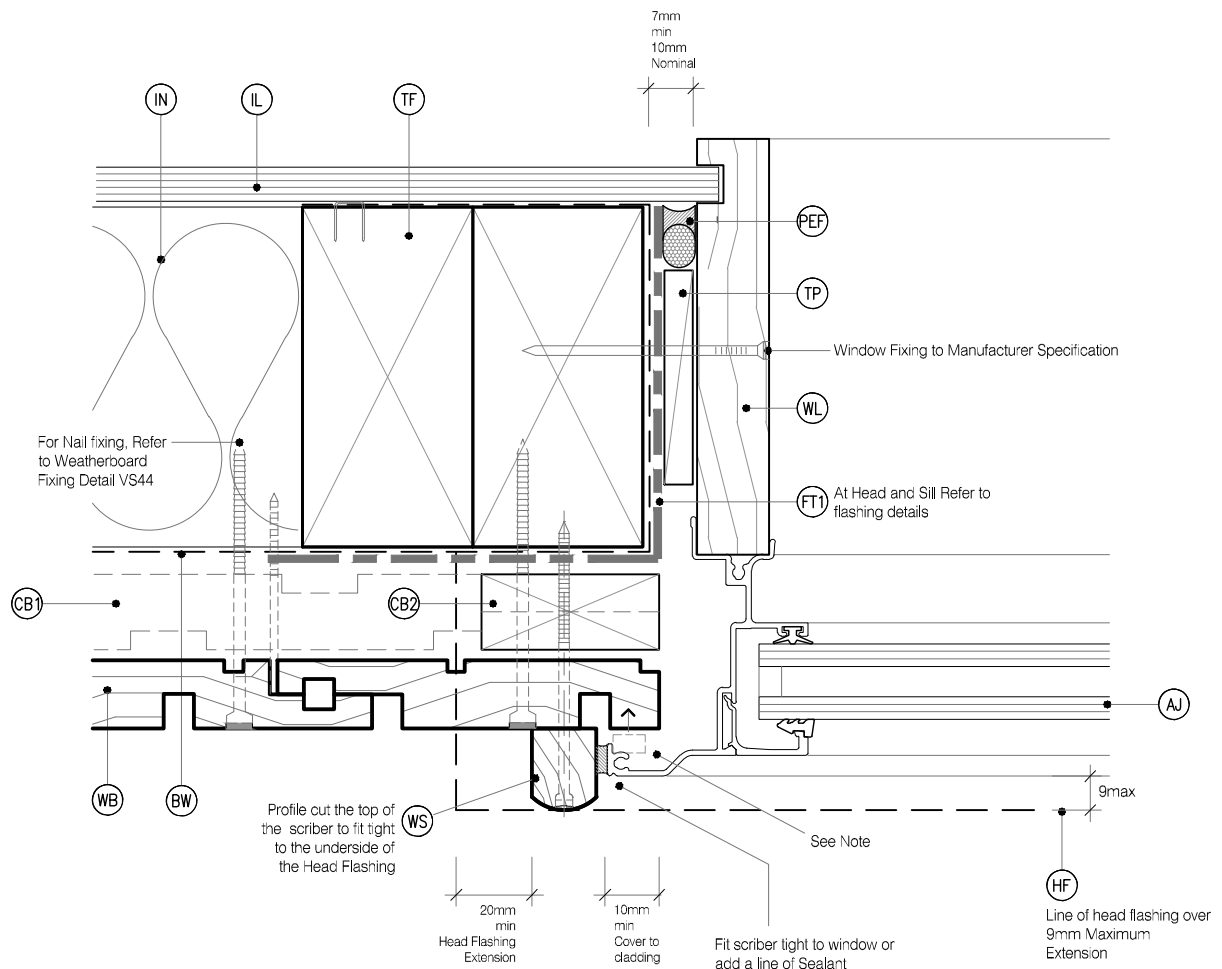
DRAWING SCALE
1:2 @ A4

ISSUE DATE
26/03/2019

DRAWING No **KLC CF20 VS11** REVISION

LEGEND :

PEF PEF ROD BACKING: Foam backing rod with sealant to cavity in Window perimeter that forms a waterproof air-seal. (Sealant 2:1 Ratio)	CB2 CAVITY BATTEN, VERTICAL: 45x20 KLC Generation II, MicroPro H3.2 F.J. To form a 20mm cavity	WL WINDOW LINER: As Specified (We Recommend MicroPro H3.2 Liners & Sills)
AJ ALUMINIUM JOINERY: Selected double glazed aluminium joinery	TF TIMBER FRAME: H1.2 min treated timber framing	WH WEATHERHEAD: (OPTIONAL) MicroPro H3.2, Horizontal batten above window as necessary to suit profile, shaped to shed water, sealant to back of head scribe
IL INTERNAL LINING: Selected Internal Lining	FT1 FLASHING TAPE: Flashing tape over wrap 70mm (50 min) turn-down required in corners only. Refer to Fig. 72 of NZBC E2/AS1	WZ WANZ SUPPORT: Provide window support as required by joinery manufacturer
BW BUILDING WRAP: Flexible Wall Underlay, As per NZBC E2/AS1 - Table 23, In extra high wind zones, Rigid Underlay required (9.1.7.2 E2/AS1)	FT2 FLEXIBLE FLASHING TAPE: Flexible flashing tape lapped over aluminium head flashing or 2nd layer of Building Wrap to taped joint or top of frame	WS WINDOW SCRIBER: KLC Generation II, MicroPro H3.2, sealant to back of scribe and 75 x 3.15mm Galvanised nail in 3mm predrilled hole.
CC CAVITY CLOSURE: Cavity closure strip, positioned to give a 15mm Min drip edge to cladding	IN INSULATION: Selected Insulation	WB WEATHER BOARD: KLC Generation II, MicroPro H3.2 Vertical Shiplap WB. Profile to NZS 3617
CB1 CAVITY BATTEN, HORIZONTAL: 45x20 Castellated with a 18 degree bevelled slope. MicroPro H3.2 F.J. To form a 20mm cavity	HF HEAD FLASHING: Aluminium head flashing with minimum 15 degree fall and optional hemmed edges as per table 7 E2/AS1	
	TP TIMBER PACKER: MicroPro H3.2 Treated Packer	



NOTE : No Scribe Option :

The Aluminium Joinery must sit hard against the back of the joinery flange and the timber weatherboards with a E.P.S Compressible bond breaker foam seal between

MicroPro® Wood Treatment Technology

- KLC use the MicroPro Micronized Copper Azole (MCA) based preservative system for their wood products. It accounts for 80% of wood treated in the US for domestic applications.
- Micronized Copper Azole (MCA) preservatives are EPA-approved for use in NZ and AUS to NZS3640:2003 and AS1604:12012
- MicroPro preservative is applied using high-pressure and vacuum-pressure in the impregnation process in KLC's modern, automated treatment facility.
- Cut End Treatment: All cut ends surfaces are to be double coated and sealed before fixing. With a alkyl (oil based) primer
- MicroPro preservative solution has benefits of reduced corrosivity. Use Hot Dip Galvanised Fasteners & Stainless Steel fasteners. MicroPro may be placed in direct contact with Aluminium Building products in interior applications, and above ground exterior applications that provide proper water drainage.
- MicroPro® is the first wood treatment process to be EPP (Environmentally Preferable Product) certified by Scientific Certification Systems based on a life cycle assessment.
- MicroPro® is environmentally sustainable, is low leaching, low VOC emissions and the award of the GREENGUARD Children and Schools Certification from the Greenguard® Environmental Institute.
- MicroPro® Wood Treatment Technology has received a Global GreenTag GreenRate™ Level A this declaration is 'Fit-for-Purpose' and confirmed for Green Building compliance.
- MicroPro® Wood Treatment Technology has received GreenTag PhD™ proving claims that MicroPro® is safe for human health (and ecosystems).

CAD REF : KLC CF20 VS10-15 - WINDOW DETAILS.dwg

DATE : 11/10/2020



www.klc.co.nz

DETAILS MAY BE SUBJECT TO CHANGE WITHOUT NOTICE
COPYRIGHT © "KLC LIMITED" ALL RIGHTS ASSERTED



Generation II H3.2 Exterior Cladding Systems Vertical Shiplap WB - Cavity Fix

NAME Window Jamb Detail - Aluminium Joinery



DRAWING SCALE

1:2 @ A4

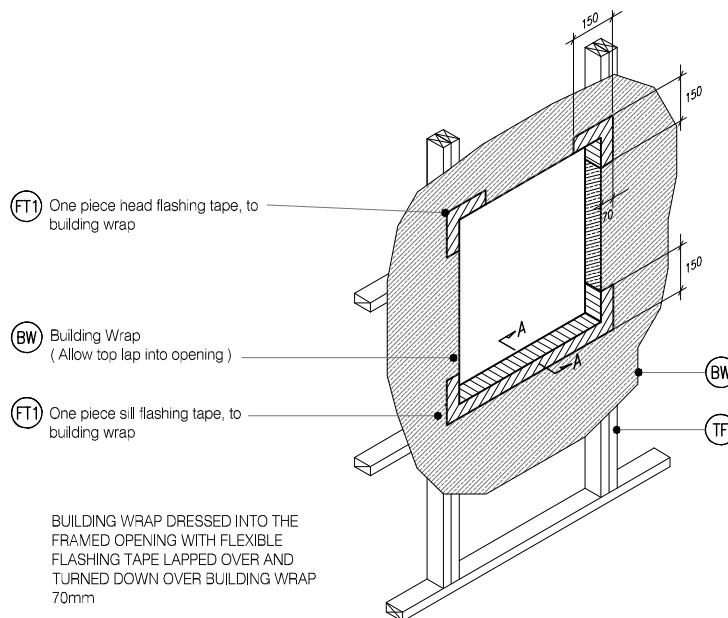
ISSUE DATE

26/03/2019

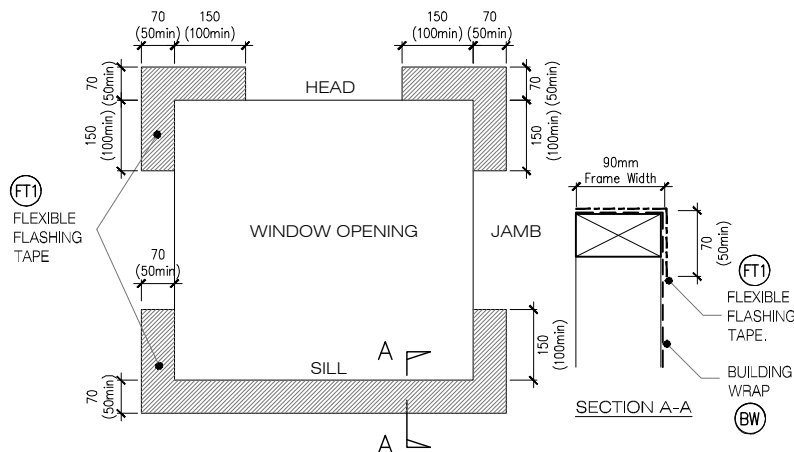
DRAWING No

KLC CF20 VS12

REVISION



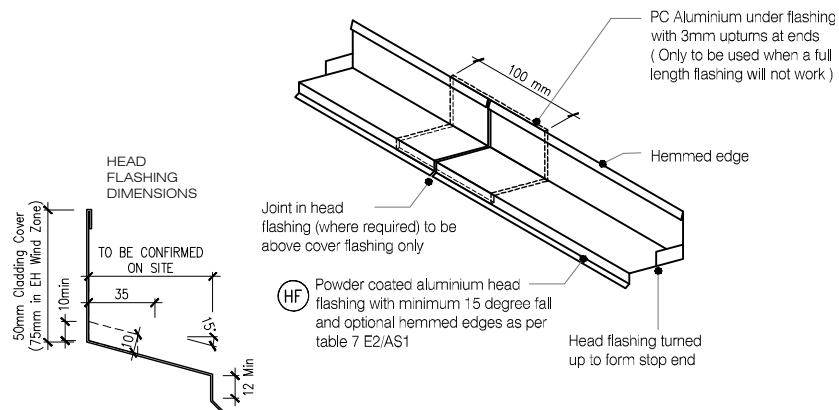
W4 TYPICAL WINDOW OPENING (FLASHING TAPE)
VS13 SCALE : N.T.S



W5 FLEXIBLE BUILDING WRAP AT OPENING
VS13 SCALE : 1 / 5 @ A1, 1 / 10 @ A3

MicroPro® Wood Treatment Technology

1. KLC use the MicroPro Micronized Copper Azole (MCA) based preservative system for their wood products. It accounts for 80% of wood treated in the US for domestic applications
2. Micronized Copper Azole (MCA) preservatives are EPA-approved for use in NZ and AUS to NZS3640:2003 and AS1604:12012
3. MicroPro preservative is applied using high-pressure and vacuum-pressure in the impregnation process in KLC's modern, automated treatment facility.
4. Cut End Treatment : All cut ends surfaces are to be double coated and **sealed before fixing. With a alkyl (oil based) primer**
5. MicroPro preservative solution has benefits of reduced corrosivity. Use Hot Dip Galvanised Fasteners & Stainless Steel fasteners. MicroPro may be placed in direct contact with Aluminium Building products in interior applications, and above ground exterior applications that provide proper water drainage
6. MicroPro® is the first wood treatment process to be EPP (Environmentally Preferable Product) certified by Scientific Certification Systems based on a life cycle assessment.
7. MicroPro® is environmentally sustainable, is low leaching, low VOC emissions and the award of the GREENGUARD Children and Schools' Certification from the Greenguard® Environmental Institute.
8. MicroPro® Wood Treatment Technology has received a Global GreenTag GreenRate™ Level A this declaration is 'Fit-for-Purpose' and confirmed for Green Building compliance.
9. MicroPro® Wood Treatment Technology has received GreenTag PhD™ proving claims that MicroPro® is safe for human health (and ecosystems).



ONE PIECE PC ALUMINIUM HEAD FLASHING 15° SLOPE WITH 10mm min COVER TO JOINERY EXTEND 30mm min EITHER SIDE OF JOINERY WITH STOP ENDS

W6 TYPICAL HEAD & FLASHING JOINT
VS13 SCALE : 1 / 2 @ A1, 1 / 4 @ A3