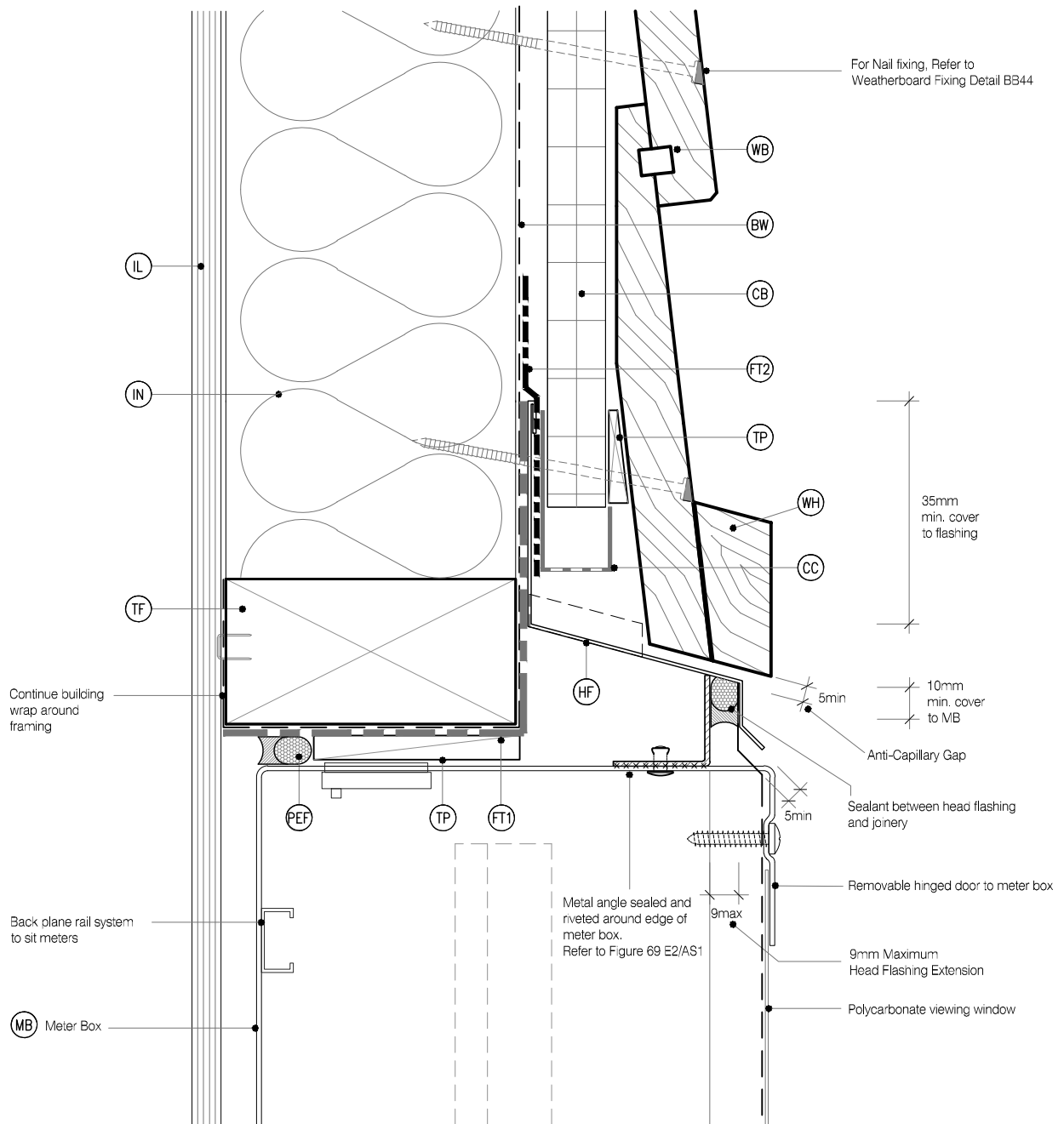


LEGEND :

PEF PEF ROD BACKING: Foam backing rod with sealant to cavity in Window perimeter that forms a waterproof air-seal. (Sealant 2:1 Ratio)	FT1 FLASHING TAPE: Flashing tape over wrap 70mm (50 min) turn-down required in corners only. Refer to Fig. 72 of NZBC E2/AS1	SS SILL SCRIBER: MicroPro H3.2, Horizontal batten under window as necessary to suit profile, sealant to back of sill scriber
AJ ALUMINIUM JOINERY: Selected double glazed aluminium joinery	FT2 FLEXIBLE FLASHING TAPE: Flexible flashing tape lapped over aluminium head flashing or 2nd layer of Building Wrap to taped joint or top of frame	WL WINDOW LINER: As Specified (We Recommend MicroPro H3.2 Liners & Sills)
IL INTERNAL LINING: Selected Internal Lining	TF TIMBER FRAME: H1.2 min treated timber framing	WH WEATHERHEAD: MicroPro H3.2, Horizontal batten above window as necessary to suit profile, shaped to shed water, sealant to back of head scriber
BW BUILDING WRAP: Flexible Wall Underlay, As per NZBC E2/AS1 - Table 23, In extra high wind zones, Rigid Underlay required (9.1.7.2 E2/AS1)	WB WEATHER BOARD: KLC Generation II, MicroPro H3.2 Bevel Back Weatherboard, Profile to NZS 3617	WZ WANZ SUPPORT: Provide window support as required by joinery manufacturer
CC CAVITY CLOSURE: Cavity closure strip, positioned to give a 15mm Min drip edge to cladding	IN INSULATION: Selected Insulation	WS WINDOW SCRIBER: KLC Generation II, MicroPro H3.2 profile cut to fit weatherboard, sealant to back of scriber and 75 x 3.15mm Galvanised nail in 3mm predrilled hole. 40x18 or 65x18 depending on weatherboard size
CB CAVITY BATTEN: 45x20 KLC Generation II, MicroPro H3.2 FJ Cavity Batten to form a 20mm cavity	HF HEAD FLASHING: Aluminium head flashing with minimum 15 degree fall and optional hemmed edges as per table 7 E2/AS1	
	TP TIMBER PACKER: MicroPro H3.2 Treated Packer	



MicroPro® Wood Treatment Technology

- KLC use the MicroPro Micronized Copper Azole (MCA) based preservative system for their wood products. It accounts for 80% of wood treated in the US for domestic applications.
- Micronized Copper Azole (MCA) preservatives are EPA-approved for use in NZ and AUS to NZS3640:2003 and AS1604:12012
- MicroPro preservative is applied using high-pressure and vacuum-pressure in the impregnation process in KLC's modern, automated treatment facility.
- Cut End Treatment: All cut ends surfaces are to be double coated and sealed before fixing. With a alkyl (oil based) primer
- MicroPro preservative solution has benefits of reduced corrosivity. Use Hot Dip Galvanised Fasteners & Stainless Steel fasteners. MicroPro may be placed in direct contact with Aluminium Building products in interior applications, and above ground exterior applications that provide proper water drainage.
- MicroPro® is the first wood treatment process to be EPP (Environmentally Preferable Product) certified by Scientific Certification Systems based on a life cycle assessment.
- MicroPro® is environmentally sustainable, is low leaching, low VOC emissions and the award of the GREENGUARD Children and Schools Certification from the Greenguard® Environmental Institute.
- MicroPro® Wood Treatment Technology has received a Global GreenTag GreenRate™ Level A this declaration is 'Fit-for-Purpose' and confirmed for Green Building compliance.
- MicroPro® Wood Treatment Technology has received GreenTag PhD™ proving claims that MicroPro® is safe for human health (and ecosystems).



www.klc.co.nz

DETAILS MAY BE SUBJECT
TO CHANGE WITHOUT NOTICE
COPYRIGHT © "KLC LIMITED" ALL RIGHTS ASSERTED

Generation II H3.2 Exterior Cladding Systems Bevel Back Weatherboard - Cavity Fix

NAME Meter Box - Head Detail



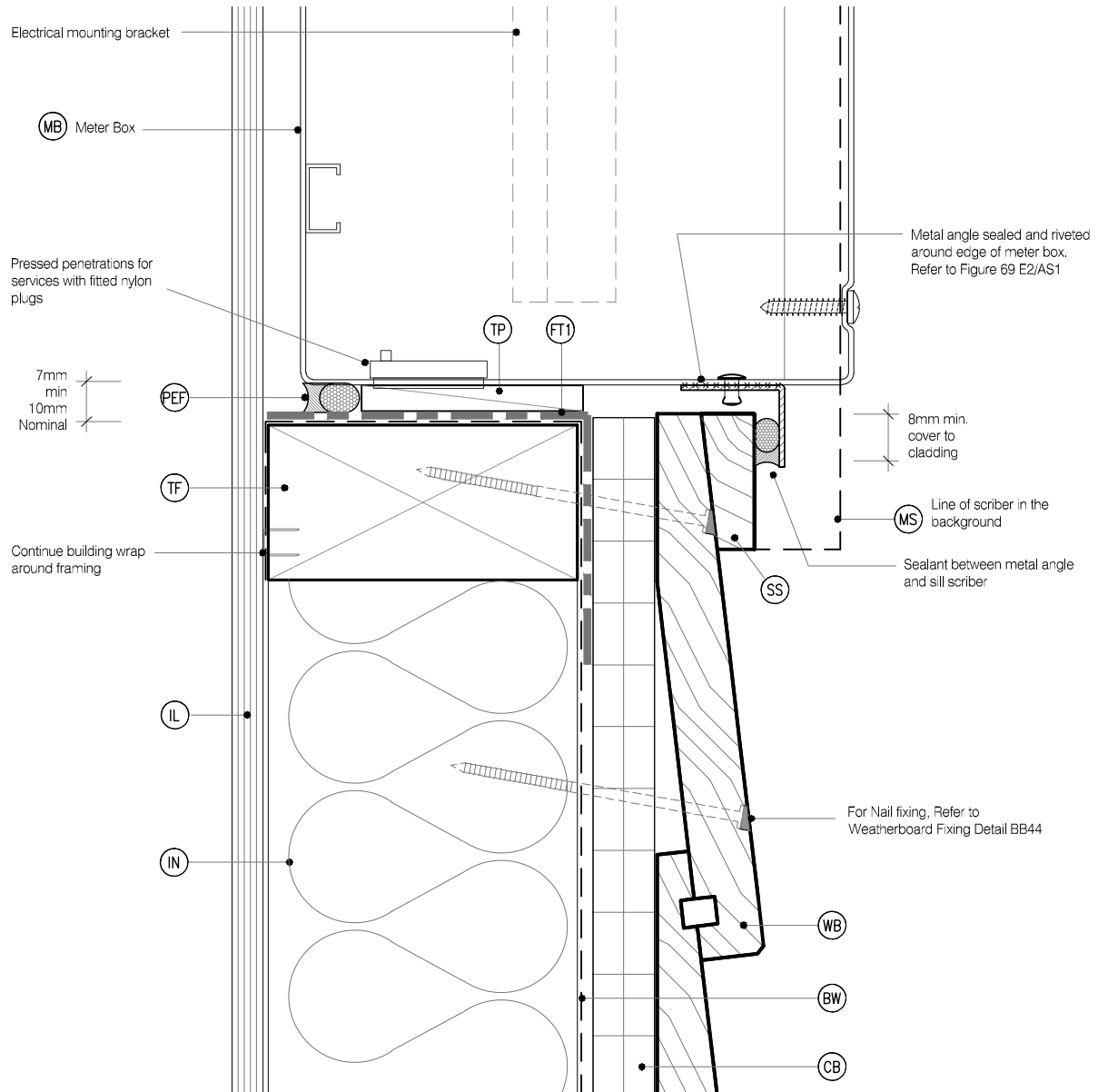
DRAWING SCALE
1:2 @ A4

ISSUE DATE
26/03/2019

DRAWING No KLC CF20 BB30 REVISION 1

LEGEND :

PEF PEF ROD BACKING: Foam backing rod with sealant to cavity in Window perimeter that forms a waterproof air-seal. (Sealant 2:1 Ratio)	FT1 FLASHING TAPE: Flashing tape over wrap 70mm (50 min) turn-down required in corners only. Refer to Fig. 72 of NZBC E2/AS1	SS SILL SCRIBER: MicroPro H3.2, Horizontal batten under window as necessary to suit profile, sealant to back of sill scriber
AJ ALUMINIUM JOINERY: Selected double glazed aluminium joinery	FT2 FLEXIBLE FLASHING TAPE: Flexible flashing tape lapped over aluminium head flashing or 2nd layer of Building Wrap to taped joint or top of frame	WL WINDOW LINER: As Specified (We Recommend MicroPro H3.2 Liners & Sills)
IL INTERNAL LINING: Selected Internal Lining	TF TIMBER FRAME: H1.2 min treated timber framing	WH WEATHERHEAD: MicroPro H3.2, Horizontal batten above window as necessary to suit profile, shaped to shed water, sealant to back of head scriber
BW BUILDING WRAP: Flexible Wall Underlay, As per NZBC E2/AS1 - Table 23, In extra high wind zones, Rigid Underlay required (9.1.7.2 E2/AS1)	WB WEATHER BOARD: KLC Generation II, MicroPro H3.2 Bevel Back Weatherboard, Profile to NZS 3617	WZ WANZ SUPPORT: Provide window support as required by joinery manufacturer
CC CAVITY CLOSURE: Cavity closure strip, positioned to give a 15mm Min drip edge to cladding	IN INSULATION: Selected Insulation	WS WINDOW SCRIBER: KLC Generation II, MicroPro H3.2 profile cut to fit weatherboard, sealant to back of scriber and 75 x 3.15mm Galvanised nail in 3mm predrilled hole. 40x18 or 65x18 depending on weatherboard size
CB CAVITY BATTEN: 45x20 KLC Generation II, MicroPro H3.2 FJ Cavity Batten to form a 20mm cavity	HF HEAD FLASHING: Aluminium head flashing with minimum 15 degree fall and optional hemmed edges as per table 7 E2/AS1	
	TP TIMBER PACKER: MicroPro H3.2 Treated Packer	



MicroPro® Wood Treatment Technology

- KLC use the MicroPro Micronized Copper Azole (MCA) based preservative system for their wood products. It accounts for 80% of wood treated in the US for domestic applications.
- Micronized Copper Azole (MCA) preservatives are EPA-approved for use in NZ and AUS to NZS3640:2003 and AS1604:12012
- MicroPro preservative is applied using high-pressure and vacuum-pressure in the impregnation process in KLC's modern, automated treatment facility.
- Cut End Treatment: All cut ends surfaces are to be double coated and sealed before fixing. With a alkyl (oil based) primer
- MicroPro preservative solution has benefits of reduced corrosivity. Use Hot Dip Galvanised Fasteners & Stainless Steel fasteners. MicroPro may be placed in direct contact with Aluminium Building products in interior applications, and above ground exterior applications that provide proper water drainage.
- MicroPro® is the first wood treatment process to be EPP (Environmentally Preferable Product) certified by Scientific Certification Systems based on a life cycle assessment.
- MicroPro® is environmentally sustainable, is low leaching, low VOC emissions and the award of the GREENGUARD Children and Schools' Certification from the Greenguard® Environmental Institute.
- MicroPro® Wood Treatment Technology has received a Global GreenTag GreenRate™ Level A this declaration is 'Fit-for-Purpose' and confirmed for Green Building compliance.
- MicroPro® Wood Treatment Technology has received GreenTag PhD™ proving claims that MicroPro® is safe for human health (and ecosystems).

CAD REF : KLC CF20 BB30-35 - METER BOX.dwg
DATE : 11/10/2020



Generation II H3.2 Exterior Cladding Systems Bevel Back Weatherboard - Cavity Fix

NAME Meter Box - Sill Detail



DRAWING SCALE
1:2 @ A4

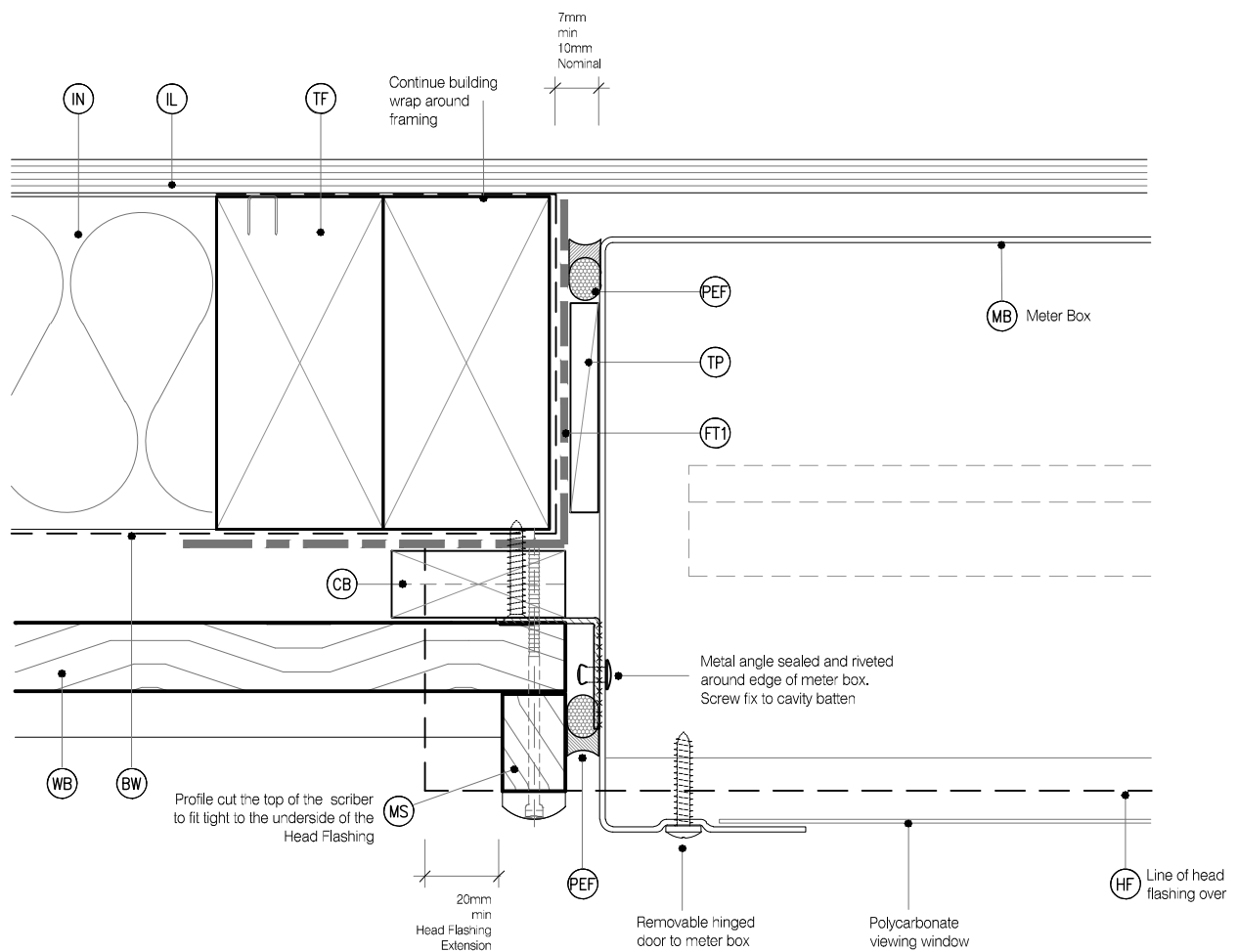
ISSUE DATE
26/03/2019

DRAWING No KLC CF20 BB31
REVISION 1

DETAILS MAY BE SUBJECT
TO CHANGE WITHOUT NOTICE
COPYRIGHT © "KLC LIMITED" ALL RIGHTS ASSERTED

LEGEND :

PEF PEF ROD BACKING: Foam backing rod with sealant to cavity in Window perimeter that forms a waterproof air-seal. (Sealant 2:1 Ratio)	FT1 FLASHING TAPE: Flashing tape over wrap 70mm (50 min) turn-down required in corners only. Refer to Fig. 72 of NZBC E2/AS1	SS SILL SCRIBER: MicroPro H3.2, Horizontal batten under window as necessary to suit profile, sealant to back of sill scriber
AJ ALUMINIUM JOINERY: Selected double glazed aluminium joinery	FT2 FLEXIBLE FLASHING TAPE: Flexible flashing tape lapped over aluminium head flashing or 2nd layer of Building Wrap to taped joint or top of frame	WL WINDOW LINER: As Specified (We Recommend MicroPro H3.2 Liners & Sills)
IL INTERNAL LINING: Selected Internal Lining	TF TIMBER FRAME: H1.2 min treated timber framing	WH WEATHERHEAD: MicroPro H3.2, Horizontal batten above window as necessary to suit profile, shaped to shed water, sealant to back of head scriber
BW BUILDING WRAP: Flexible Wall Underlay, As per NZBC E2/AS1 - Table 23, In extra high wind zones, Rigid Underlay required (9.1.7.2 E2/AS1)	WB WEATHER BOARD: KLC Generation II, MicroPro H3.2 Bevel Back Weatherboard, Profile to NZS 3617	WZ WANZ SUPPORT: Provide window support as required by joinery manufacturer
CC CAVITY CLOSURE: Cavity closure strip, positioned to give a 15mm Min drip edge to cladding	IN INSULATION: Selected Insulation	WS WINDOW SCRIBER: KLC Generation II, MicroPro H3.2 profile cut to fit weatherboard, sealant to back of scriber and 75 x 3.15mm Galvanised nail in 3mm predrilled hole. 40x18 or 65x18 depending on weatherboard size
CB CAVITY BATTEN: 45x20 KLC Generation II, MicroPro H3.2 FJ Cavity Batten to form a 20mm cavity	HF HEAD FLASHING: Aluminium head flashing with minimum 15 degree fall and optional hemmed edges as per table 7 E2/AS1	
	TP TIMBER PACKER: MicroPro H3.2 Treated Packer	



MicroPro® Wood Treatment Technology

- KLC use the MicroPro Micronized Copper Azole (MCA) based preservative system for their wood products. It accounts for 80% of wood treated in the US for domestic applications.
- Micronized Copper Azole (MCA) preservatives are EPA-approved for use in NZ and AUS to NZS3640:2003 and AS1604:12012
- MicroPro preservative is applied using high-pressure and vacuum-pressure in the impregnation process in KLC's modern, automated treatment facility.
- Cut End Treatment: All cut ends surfaces are to be double coated and sealed before fixing. With a alkyl (oil based) primer
- MicroPro preservative solution has benefits of reduced corrosivity. Use Hot Dip Galvanised Fasteners & Stainless Steel fasteners. MicroPro may be placed in direct contact with Aluminium Building products in interior applications, and above ground exterior applications that provide proper water drainage.
- MicroPro® is the first wood treatment process to be EPP (Environmentally Preferable Product) certified by Scientific Certification Systems based on a life cycle assessment.
- MicroPro® is environmentally sustainable, is low leaching, low VOC emissions and the award of the GREENGUARD Children and Schools Certification from the Greenguard® Environmental Institute.
- MicroPro® Wood Treatment Technology has received a Global GreenTag GreenRate™ Level A this declaration is 'Fit-for-Purpose' and confirmed for Green Building compliance.
- MicroPro® Wood Treatment Technology has received GreenTag PhD™ proving claims that MicroPro® is safe for human health (and ecosystems).



TYPE Generation II H3.2 Exterior Cladding Systems Bevel Back Weatherboard - Cavity Fix

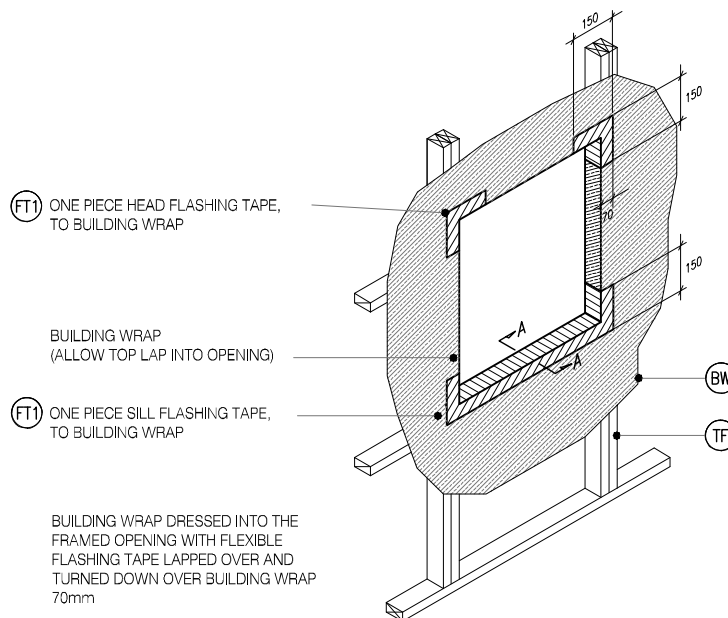
NAME Meter Box - Jamb Detail



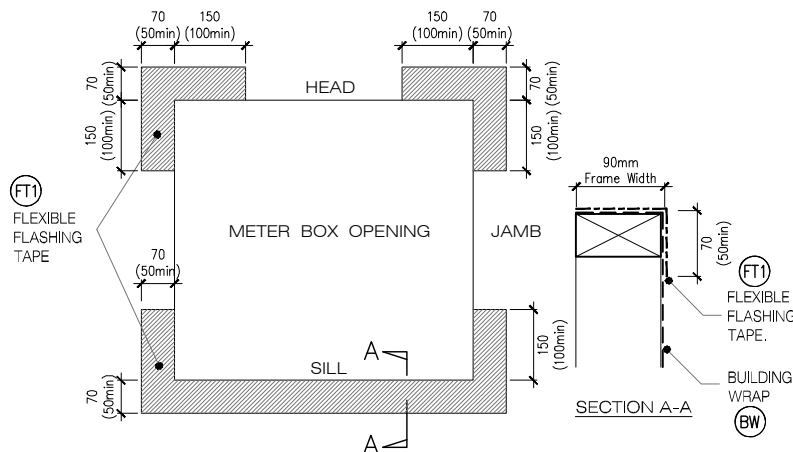
DRAWING SCALE
1:2 @ A4

ISSUE DATE
26/03/2019

DRAWING No	REVISION
KLC CF20 BB32	1



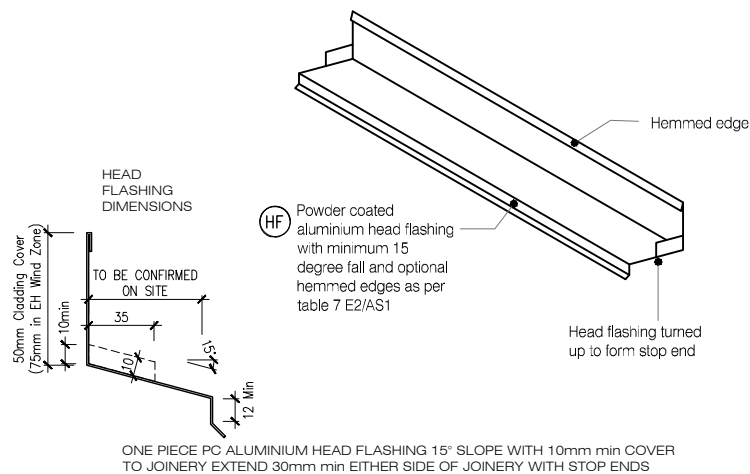
M4 TYPICAL METER BOX OPENING (FLASHING TAPE)
BB33 SCALE : N.T.S



M5 FLEXIBLE BUILDING WRAP AT OPENING
BB33 SCALE : 1 / 5 @ A1, 1 / 10 @ A3

MicroPro® Wood Treatment Technology

1. KLC use the MicroPro Micronized Copper Azole (MCA) based preservative system for their wood products. It accounts for 80% of wood treated in the US for domestic applications
2. Micronized Copper Azole (MCA) preservatives are EPA-approved for use in NZ and AUS to NZS3640:2003 and AS1604:12012
3. MicroPro preservative is applied using high-pressure and vacuum-pressure in the impregnation process in KLC's modern, automated treatment facility.
4. Cut End Treatment : All cut ends surfaces are to be double coated and **sealed before fixing. With a alkylid (oil based) primer**
5. **MicroPro preservative solution has benefits of reduced corrosion.** Use Hot Dip Galvanised Fasteners & Stainless Steel fasteners. MicroPro may be placed in direct contact with Aluminium Building products in interior applications, and above ground exterior applications that provide proper water drainage
6. MicroPro® is the first wood treatment process to be EPP (Environmentally Preferable Product) certified by Scientific Certification Systems based on a life cycle assessment.
7. MicroPro® is environmentally sustainable, is low leaching, low VOC emissions and the award of the GREENGUARD Children and Schools' Certification from the Greenguard® Environmental Institute.
8. MicroPro® Wood Treatment Technology has received a Global GreenTag GreenRate™ Level A this declaration is 'Fit-for-Purpose' and confirmed for Green Building compliance.
9. MicroPro® Wood Treatment Technology has received GreenTag PhD™ proving claims that MicroPro® is safe for human health (and ecosystems).



M6 TYPICAL HEAD & FLASHING JOINT
BB33 SCALE : 1 / 2 @ A1, 1 / 4 @ A3