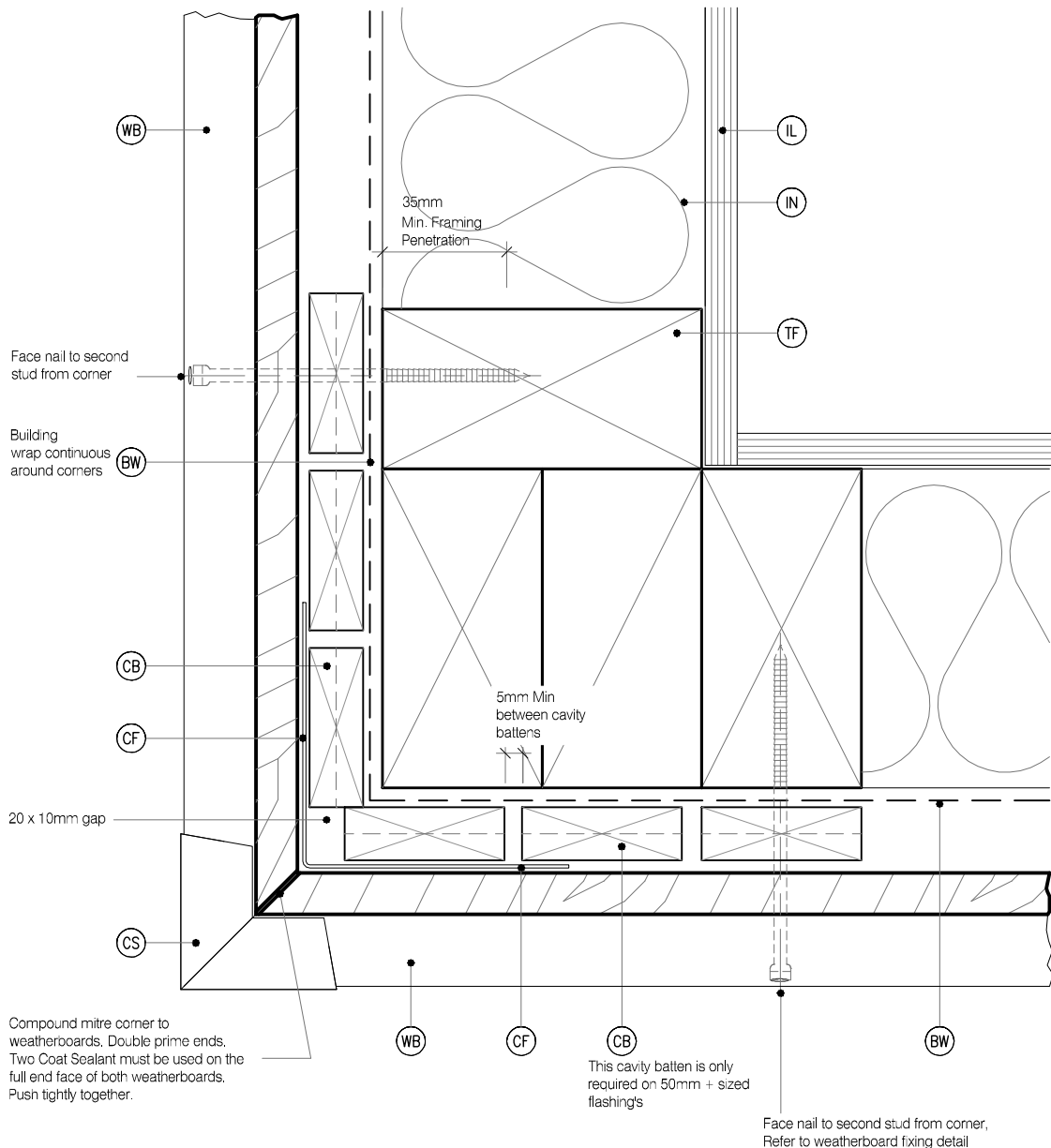


## LEGEND :

- CB** CAVITY BATTEN: 45x20 KLC Generation II, SG6 Min MicroPro H3.2 FJ Cavity Batten. Forms a 20mm cavity
- IL** INTERNAL LINING: Selected Internal Lining
- BW** BUILDING WRAP: Flexible Wall Underlay, As per NZBC E2/AS1 - Table 23, In extra high wind zones, Rigid Underlay required (9.1.7.2 E2/AS1)
- CS** CORNER SOAKER: With 15mm Min cover over weatherboards

- FT3** FLEXIBLE FLASHING TAPE: Flexible flashing tape lapped into corner
- TF** TIMBER FRAME: H1.2 min treated timber framing
- WB** WEATHER BOARD: KLC Generation II, MicroPro H3.2 Bevel Back Weatherboard. Profile to NZS 3617
- IN** INSULATION: Selected Insulation

- CF** CORNER FLASHING: Aluminium, PVC or Stainless Steel corner flashing. Refer NZBC E2/AS1 4.3 50x50 Hem or Hook to Flashing Edges 75x75 NO, Hem or Hook Required EXTRA HIGH WIND ZONE 100x100 Hem or Hook to Flashing Edges, Refer NZBC E2/AS1 4.5.1



## MicroPro® Wood Treatment Technology

- KLC use the MicroPro Micronized Copper Azole (MCA) based preservative system for their wood products. It accounts for 80% of wood treated in the US for domestic applications.
- Micronized Copper Azole (MCA) preservatives are EPA-approved for use in NZ and AUS to NZS3640:2003 and AS1604:12012
- MicroPro preservative is applied using high-pressure and vacuum-pressure in the impregnation process in KLC's modern, automated treatment facility.
- Cut End Treatment: All cut ends surfaces are to be double coated and sealed before fixing. With a alkylid (oil based) primer
- MicroPro preservative solution has benefits of reduced corrosivity. Use Hot Dip Galvanised Fasteners & Stainless Steel fasteners. MicroPro may be placed in direct contact with Aluminium Building products in interior applications, and above ground exterior applications that provide proper water drainage.
- MicroPro® is the first wood treatment process to be EPP (Environmentally Preferable Product) certified by Scientific Certification Systems based on a life cycle assessment.
- MicroPro® is environmentally sustainable, is low leaching, low VOC emissions and the award of the GREENGUARD Children and Schools Certification from the Greenguard® Environmental Institute.
- MicroPro® Wood Treatment Technology has received a Global GreenTag GreenRate™ Level A this declaration is 'Fit-for-Purpose' and confirmed for Green Building compliance.
- MicroPro® Wood Treatment Technology has received GreenTag PhD™ proving claims that MicroPro® is safe for human health (and ecosystems).

CAD REF : KLC CF20 BB40-46 - GENERAL DETAILS 01.dwg  
DATE : 11/10/2020



**www.klc.co.nz**  
DETAILS MAY BE SUBJECT  
TO CHANGE WITHOUT NOTICE  
COPYRIGHT © KLC LIMITED ALL RIGHTS ASSERTED

TYPE **Generation II H3.2 Exterior Cladding Systems**  
**Bevel Back Weatherboard - Cavity Fix**

NAME **External Corner Soaker**



DRAWING SCALE  
1:2 @ A4

ISSUE DATE  
26/03/2019

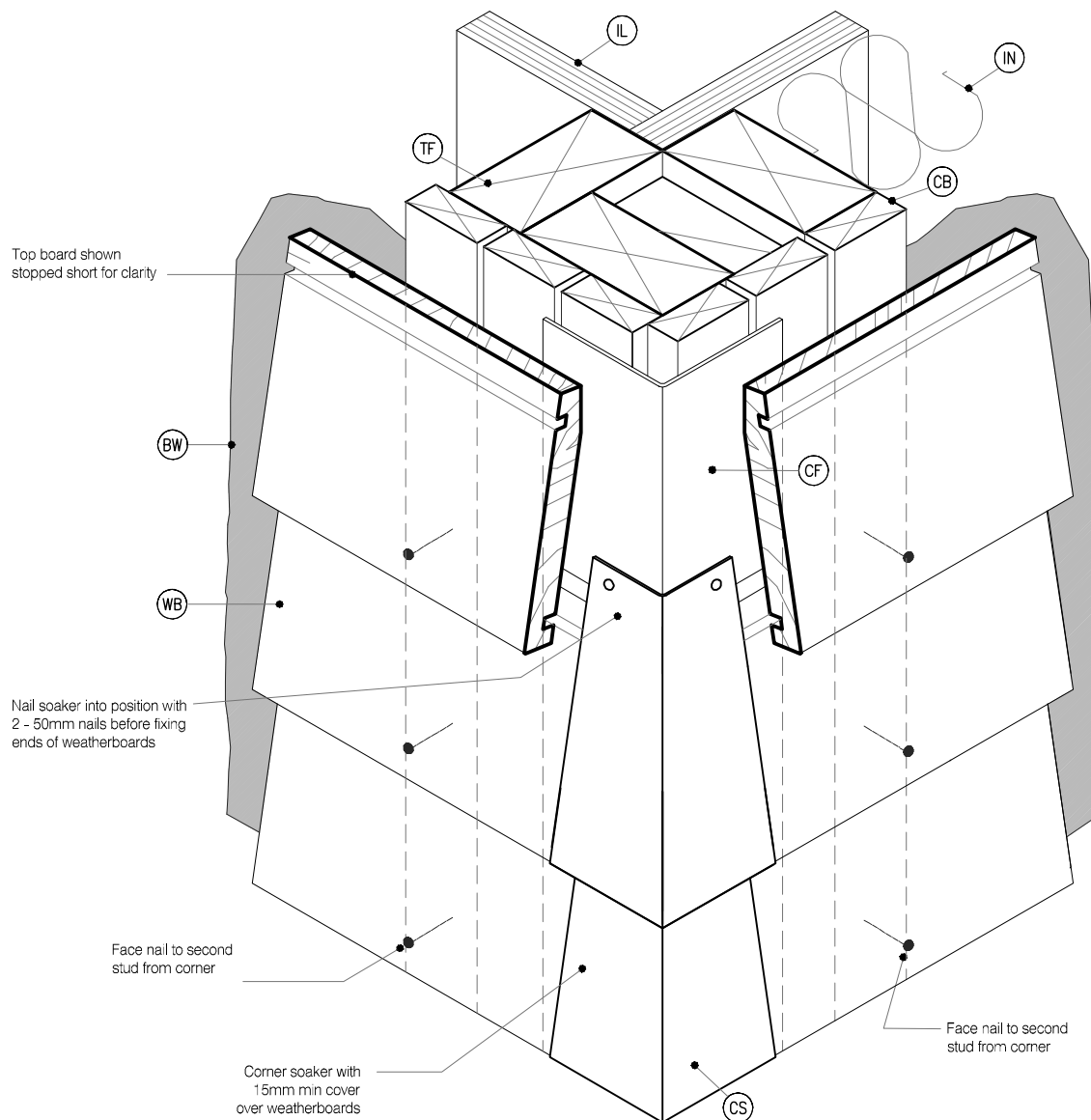
DRAWING No **KLC CF20 BB40** REVISION **1**

## LEGEND :

- (CB)** CAVITY BATTEN: 45x20 KLC Generation II, SG6 Min MicroPro H3.2 FJ Cavity Batten. Forms a 20mm cavity
- (IL)** INTERNAL LINING: Selected Internal Lining
- (BW)** BUILDING WRAP: Flexible Wall Underlay, As per NZBC E2/AS1 - Table 23, In extra high wind zones, Rigid Underlay required ( 9.1.7.2 E2/AS1 )
- (CS)** CORNER SOAKER: With 15mm Min cover over weatherboards

- (FT3)** FLEXIBLE FLASHING TAPE: Flexible flashing tape lapped into corner
- (TF)** TIMBER FRAME: H1.2 min treated timber framing
- (WB)** WEATHER BOARD: KLC Generation II, MicroPro H3.2 Bevel Back Weatherboard. Profile to NZS 3617
- (IN)** INSULATION: Selected Insulation

- (CF)** CORNER FLASHING: Aluminium, PVC or Stainless Steel corner flashing. Refer NZBC E2/AS1 4.3 50x50 Hem or Hook to Flashing Edges 75x75 NO, Hem or Hook Required EXTRA HIGH WIND ZONE 100x100 Hem or Hook to Flashing Edges, Refer NZBC E2/AS1 4.5.1



Soaker material	Nail material
Copper	Copper or phosphor bronze
Aluminium	Hot dip galvanised
Stainless steel	Stainless steel

### MicoPro® Wood Treatment Technology

- KLC use the MicroPro Micronized Copper Azole (MCA) based preservative system for their wood products. It accounts for 80% of wood treated in the US for domestic applications.
- Micronized Copper Azole (MCA) preservatives are EPA-approved for use in NZ and AUS to NZS3640:2003 and AS1604:12012
- MicroPro preservative is applied using high-pressure and vacuum-pressure in the impregnation process in KLC's modern, automated treatment facility.
- Cut End Treatment: All cut ends surfaces are to be double coated and sealed before fixing. With a alkylid (oil based) primer
- MicroPro preservative solution has benefits of reduced corrosivity. Use Hot Dip Galvanised Fasteners & Stainless Steel fasteners. MicroPro may be placed in direct contact with Aluminium Building products in interior applications, and above ground exterior applications that provide proper water drainage.
- MicroPro® is the first wood treatment process to be EPP (Environmentally Preferable Product) certified by Scientific Certification Systems based on a life cycle assessment.
- MicroPro® is environmentally sustainable, is low leaching, low VOC emissions and the award of the GREENGUARD Children and Schools' Certification from the Greenguard® Environmental Institute.
- MicroPro® Wood Treatment Technology has received a Global GreenTag GreenRate™ Level A this declaration is 'Fit-for-Purpose' and confirmed for Green Building compliance.
- MicroPro® Wood Treatment Technology has received GreenTag PhD™ proving claims that MicroPro® is safe for human health (and ecosystems).

CAD REF : KLC CF20 BB40-46 - GENERAL DETAILS 01.dwg  
DATE : 11/10/2020



**www.klc.co.nz**  
DETAILS MAY BE SUBJECT  
TO CHANGE WITHOUT NOTICE  
COPYRIGHT © KLC LIMITED ALL RIGHTS ASSERTED



TYPE **Generation II H3.2 Exterior Cladding Systems**  
**Bevel Back Weatherboard - Cavity Fix**

NAME **3D - External Corner Soaker**



DRAWING SCALE  
1:2 @ A4

ISSUE DATE  
26/03/2019

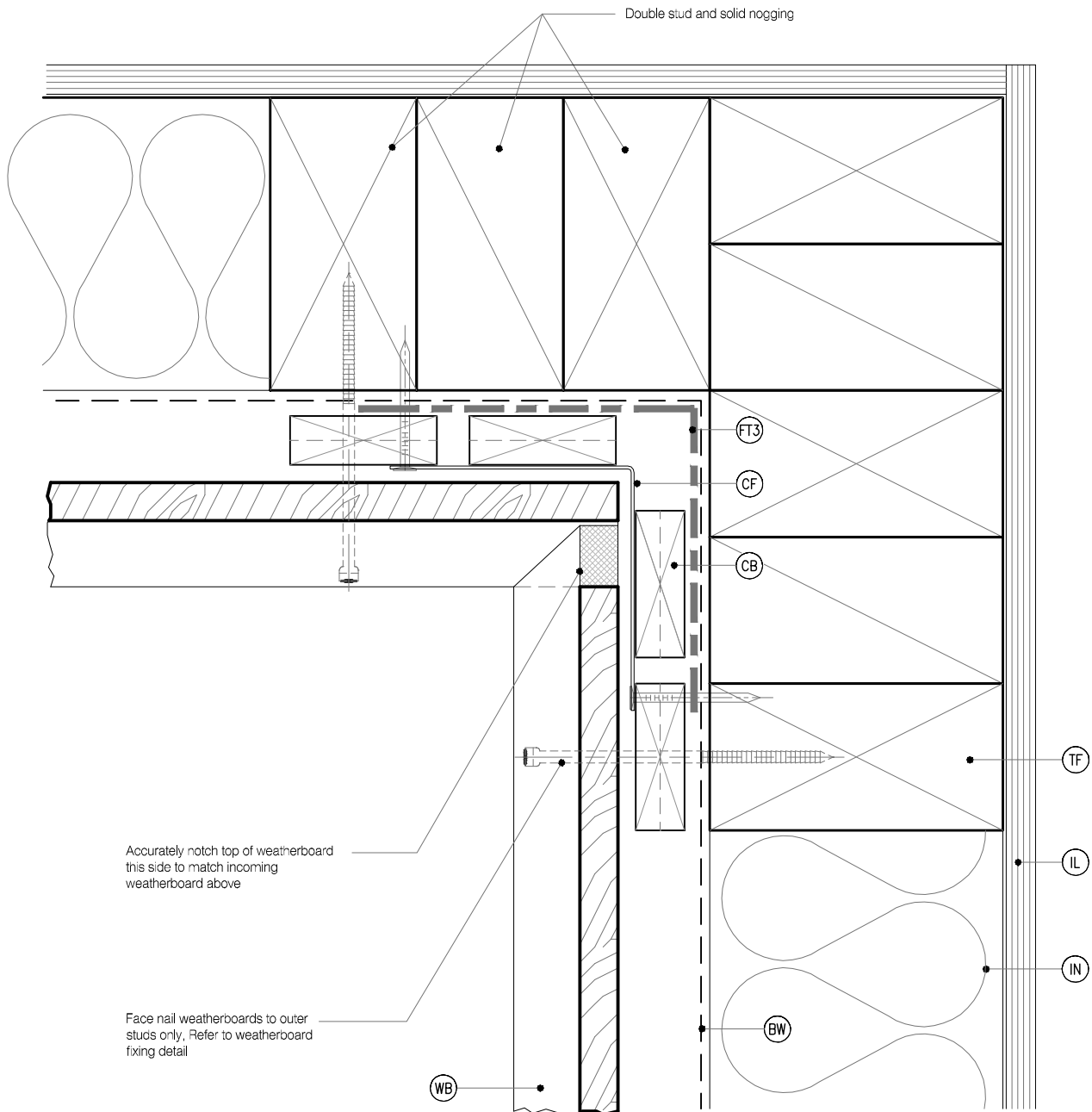
DRAWING No **KLC CF20 BB41** REVISION **1**

## LEGEND :

- (CB) CAVITY BATTEN: 45x20 KLC Generation II, SG6 Min MicroPro H3.2 FJ Cavity Batten. Forms a 20mm cavity
- (IL) INTERNAL LINING: Selected Internal Lining
- (BW) BUILDING WRAP: Flexible Wall Underlay, As per NZBC E2/AS1 - Table 23, In extra high wind zones, Rigid Underlay required ( 9.1.7.2 E2/AS1 )
- (CS) CORNER SOAKER: With 15mm Min cover over weatherboards

- (FT3) FLEXIBLE FLASHING TAPE: Flexible flashing tape lapped into corner
- (TF) TIMBER FRAME: H1.2 min treated timber framing
- (WB) WEATHER BOARD: KLC Generation II, MicroPro H3.2 Bevel Back Weatherboard. Profile to NZS 3617
- (IN) INSULATION: Selected Insulation

- (CF) CORNER FLASHING: Aluminium, PVC or Stainless Steel corner flashing. Refer NZBC E2/AS1 4.3 50x50 Hem or Hook to Flashing Edges 75x75 NO, Hem or Hook Required EXTRA HIGH WIND ZONE 100x100 Hem or Hook to Flashing Edges, Refer NZBC E2/AS1 4.5.1



## DETAIL NOTES :

1. Flashing tape is recommended due to movement that may occur in corners but it is not required by E2/AS1
2. Aluminium extrusion must not be continuous over solid floor joists.

### MicroPro® Wood Treatment Technology

1. KLC use the MicroPro Micronized Copper Azole (MCA) based preservative system for their wood products. It accounts for 80% of wood treated in the US for domestic applications.
2. Micronized Copper Azole (MCA) preservatives are EPA-approved for use in NZ and AUS to NZS3640:2003 and AS1604:12012
3. MicroPro preservative is applied using high-pressure and vacuum-pressure in the impregnation process in KLC's modern, automated treatment facility.
4. Cut End Treatment: All cut ends surfaces are to be double coated and sealed before fixing. With a alkylid (oil based) primer
5. MicroPro preservative solution has benefits of reduced corrosivity. Use Hot Dip Galvanised Fasteners & Stainless Steel fasteners. MicroPro may be placed in direct contact with Aluminium Building products in interior applications, and above ground exterior applications that provide proper water drainage
6. MicroPro® is the first wood treatment process to be EPP (Environmentally Preferable Product) certified by Scientific Certification Systems based on a life cycle assessment.
7. MicroPro® is environmentally sustainable, is low leaching, low VOC emissions and the award of the GREENGUARD Children and Schools' Certification from the Greenguard® Environmental Institute.
8. MicroPro® Wood Treatment Technology has received a Global GreenTag GreenRate™ Level A this declaration is 'Fit-for-Purpose' and confirmed for Green Building compliance.
9. MicroPro® Wood Treatment Technology has received GreenTag PhD™ proving claims that MicroPro® is safe for human health (and ecosystems).

CAD REF :KLC CF20 BB40-46 - GENERAL DETAILS 01.dwg

DATE :11/10/2020



DETAILS MAY BE SUBJECT TO CHANGE WITHOUT NOTICE  
COPYRIGHT © "KLC LIMITED" ALL RIGHTS ASSERTED



TYPE **Generation II H3.2 Exterior Cladding Systems**  
**Bevel Back Weatherboard - Cavity Fix**

NAME **Internal Corner**



DRAWING SCALE  
1:2 @ A4

ISSUE DATE  
26/03/2019

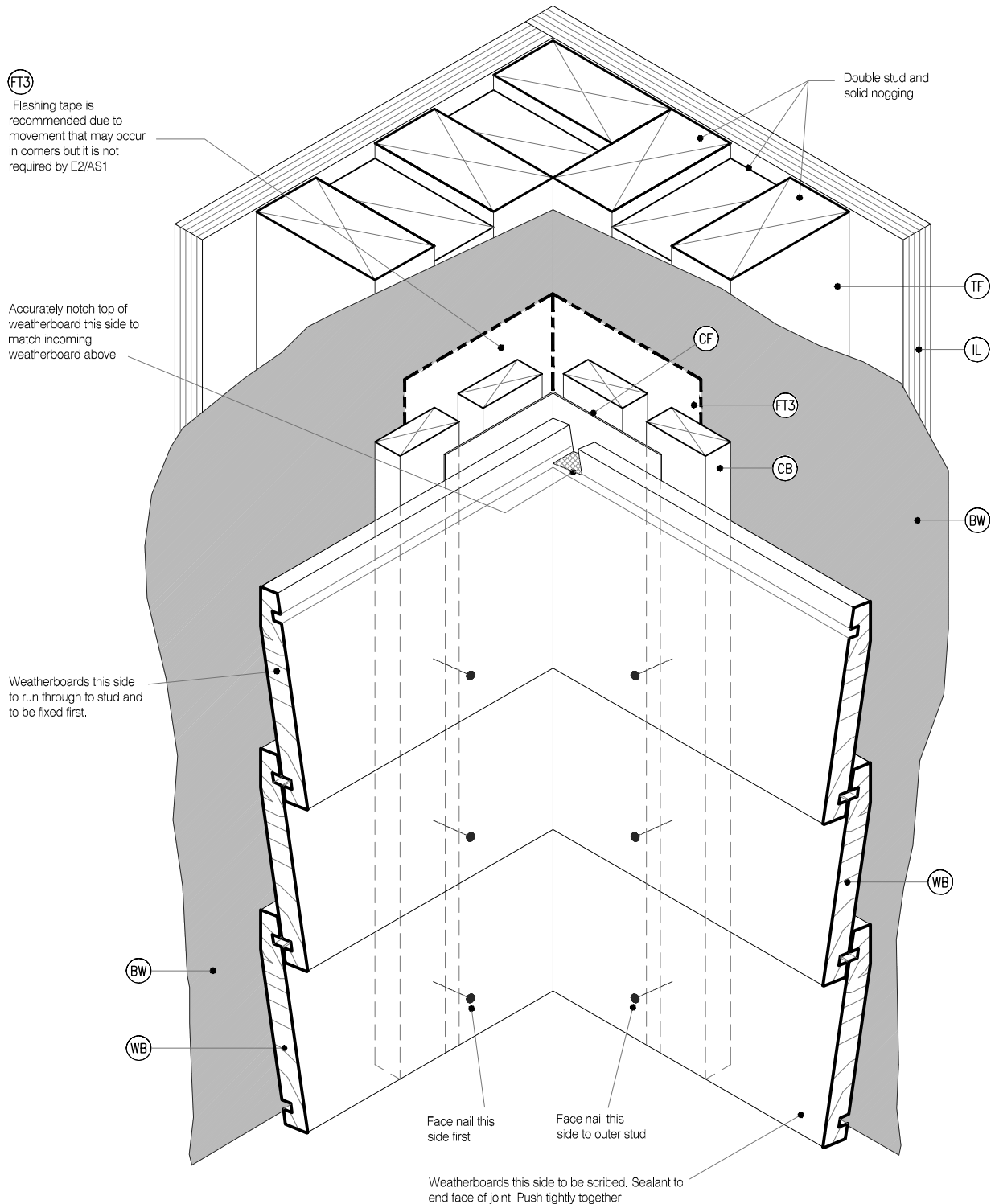
DRAWING No **KLC CF20 BB42** REVISION **1**

## LEGEND :

- CB** CAVITY BATTEN: 45x20 KLC Generation II, SG6 Min MicroPro H3.2 FJ Cavity Batten. Forms a 20mm cavity
- IL** INTERNAL LINING: Selected Internal Lining
- BW** BUILDING WRAP: Flexible Wall Underlay, As per NZBC E2/AS1 - Table 23, In extra high wind zones, Rigid Underlay required ( 9.1.7.2 E2/AS1 )
- CS** CORNER SOAKER: With 15mm Min cover over weatherboards

- FT3** FLEXIBLE FLASHING TAPE: Flexible flashing tape lapped into corner
- TF** TIMBER FRAME: H1.2 min treated timber framing
- WB** WEATHER BOARD: KLC Generation II, MicroPro H3.2 Bevel Back Weatherboard. Profile to NZS 3617
- IN** INSULATION: Selected Insulation

- CF** CORNER FLASHING: Aluminium, PVC or Stainless Steel corner flashing. Refer NZBC E2/AS1 4.3 50x50 Hem or Hook to Flashing Edges 75x75 NO, Hem or Hook Required EXTRA HIGH WIND ZONE 100x100 Hem or Hook to Flashing Edges, Refer NZBC E2/AS1 4.5.1



### MicroPro® Wood Treatment Technology

- KLC use the MicroPro Micronized Copper Azole ( MCA ) based preservative system for their wood products. It accounts for 80% of wood treated in the US for domestic applications.
- Micronized Copper Azole ( MCA ) preservatives are EPA-approved for use in NZ and AUS to NZS3640:2003 and AS1604:12012
- MicroPro preservative is applied using high-pressure and vacuum-pressure in the impregnation process in KLC's modern, automated treatment facility.
- Cut End Treatment : All cut ends surfaces are to be double coated and sealed before fixing. With a alkylid ( oil based ) primer
- MicroPro preservative solution has benefits of reduced corrosivity. Use Hot Dip Galvanised Fasteners & Stainless Steel fasteners. MicroPro may be placed in direct contact with Aluminium Building products in interior applications, and above ground exterior applications that provide proper water drainage
- MicroPro® is the first wood treatment process to be EPP ( Environmentally Preferable Product ) certified by Scientific Certification Systems based on a life cycle assessment.
- MicroPro® is environmentally sustainable, is low leaching, low VOC emissions and the award of the GREENGUARD Children and Schools' Certification from the Greenguard® Environmental Institute.
- MicroPro® Wood Treatment Technology has received a Global GreenTag GreenRate™ Level A this declaration is 'Fit-for-Purpose' and confirmed for Green Building compliance.
- MicroPro® Wood Treatment Technology has received GreenTag PhD™ proving claims that MicroPro® is safe for human health (and ecosystems).

CAD REF : KLC CF20 BB40-46 - GENERAL DETAILS 01.dwg  
DATE : 11/10/2020



[www.klc.co.nz](http://www.klc.co.nz)  
DETAILS MAY BE SUBJECT  
TO CHANGE WITHOUT NOTICE  
COPYRIGHT © "KLC LIMITED" ALL RIGHTS ASSERTED



### TYPE Generation II H3.2 Exterior Cladding Systems Bevel Back Weatherboard - Cavity Fix

NAME 3D - Internal Corner



DRAWING SCALE  
1:2 @ A4

ISSUE DATE  
26/03/2019

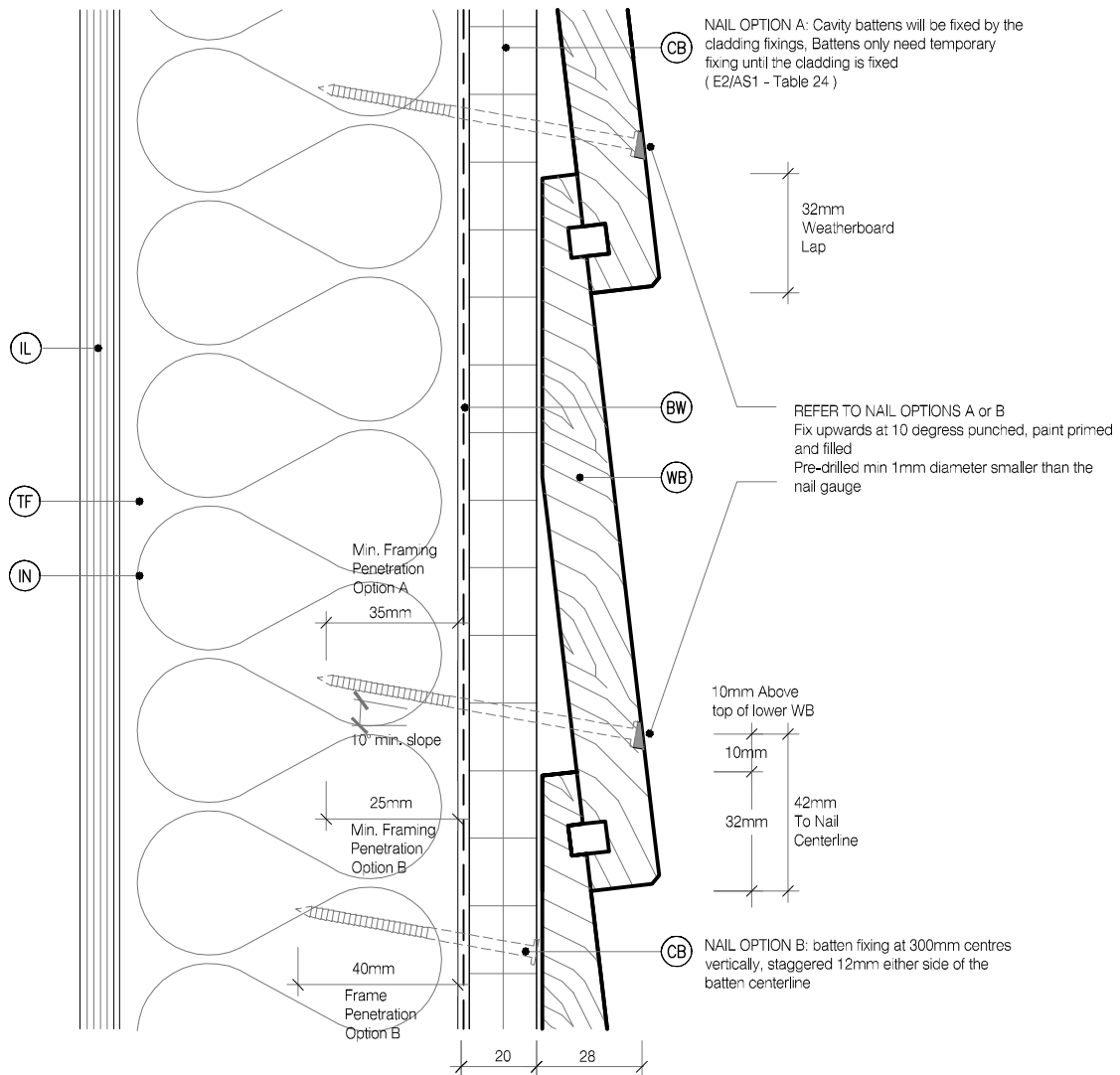
DRAWING No KLC CF20 BB43  
REVISION 1

## LEGEND :

- CB** CAVITY BATTEN: 45x20 KLC Generation II, SG6 Min MicroPro H3.2 FJ Cavity Batten. Forms a 20mm cavity
- IL** INTERNAL LINING: Selected Internal Lining
- BW** BUILDING WRAP: Flexible Wall Underlay, As per NZBC E2/AS1 - Table 23, In extra high wind zones, Rigid Underlay required ( 9.1.7.2 E2/AS1 )
- CS** CORNER SOAKER: With 15mm Min cover over weatherboards

- FT3** FLEXIBLE FLASHING TAPE: Flexible flashing tape lapped into corner
- TF** TIMBER FRAME: H1.2 min treated timber framing
- WB** WEATHER BOARD: KLC Generation II, MicroPro H3.2 Bevel Back Weatherboard. Profile to NZS 3617
- IN** INSULATION: Selected Insulation

- CF** CORNER FLASHING: Aluminium, PVC or Stainless Steel corner flashing. Refer NZBC E2/AS1 4.3 50x50 Hem or Hook to Flashing Edges 75x75 NO, Hem or Hook Required EXTRA HIGH WIND ZONE 100x100 Hem or Hook to Flashing Edges, Refer NZBC E2/AS1 4.5.1



### NAIL OPTION A - One Nail to Framing ( Refer E2/AS1 - Table 24 )

WEATHERBOARD & CAVITY BATTEN FIXING  
90 x 3.55mm Jolt Head, Hot Dip Galvanised Nail  
OR  
75 x 3.15mm CSK Annular Grooved, HD Galv Nail  
75 x 3.15mm CSK Annular Grooved, SS Nail

### NAIL OPTION B - Structurally Fixed Cavity Batten ( Refer BRANZ Bulletin No 582 & Test Report ST0589 )

BATTEN FIXING OPTION  
60 x 2.8mm Jolt Head, Hot Dip Galvanised Nail  
65 x 2.87mm Power Driver, Hot Dip Galvanised Nail  
65 x 2.87mm Power Driver, Annular Grooved SS Nail  
WEATHERBOARD FIXING  
75 x 3.15mm Jolt Head, Hot Dip Galvanised Nail  
75 x 3.15mm CSK Annular Grooved, SS Nail

## MicroPro® Wood Treatment Technology

- KLC use the MicroPro Micronized Copper Azole ( MCA ) based preservative system for their wood products. It accounts for 80% of wood treated in the US for domestic applications.
- Micronized Copper Azole ( MCA ) preservatives are EPA-approved for use in NZ and AUS to NZS3640:2003 and AS1604:12012
- MicroPro preservative is applied using high-pressure and vacuum-pressure in the impregnation process in KLC's modern, automated treatment facility.
- Cut End Treatment: All cut ends surfaces are to be double coated and sealed before fixing. With a alkylid ( oil based ) primer
- MicroPro preservative solution has benefits of reduced corrosivity. Use Hot Dip Galvanised Fasteners & Stainless Steel fasteners. MicroPro may be placed in direct contact with Aluminium Building products in interior applications, and above ground exterior applications that provide proper water drainage.
- MicroPro® is the first wood treatment process to be EPP ( Environmentally Preferable Product ) certified by Scientific Certification Systems based on a life cycle assessment.
- MicroPro® is environmentally sustainable, is low leaching, low VOC emissions and the award of the GREENGUARD Children and Schools Certification from the Greenguard® Environmental Institute.
- MicroPro® Wood Treatment Technology has received a Global GreenTag GreenRate™ Level A this declaration is 'Fit-for-Purpose' and confirmed for Green Building compliance.
- MicroPro® Wood Treatment Technology has received GreenTag PhD™ proving claims that MicroPro® is safe for human health (and ecosystems).



## Generation II H3.2 Exterior Cladding Systems Bevel Back Weatherboard - Cavity Fix

NAME Weatherboard Fixing



DRAWING SCALE  
1:2 @ A4

ISSUE DATE  
26/03/2019

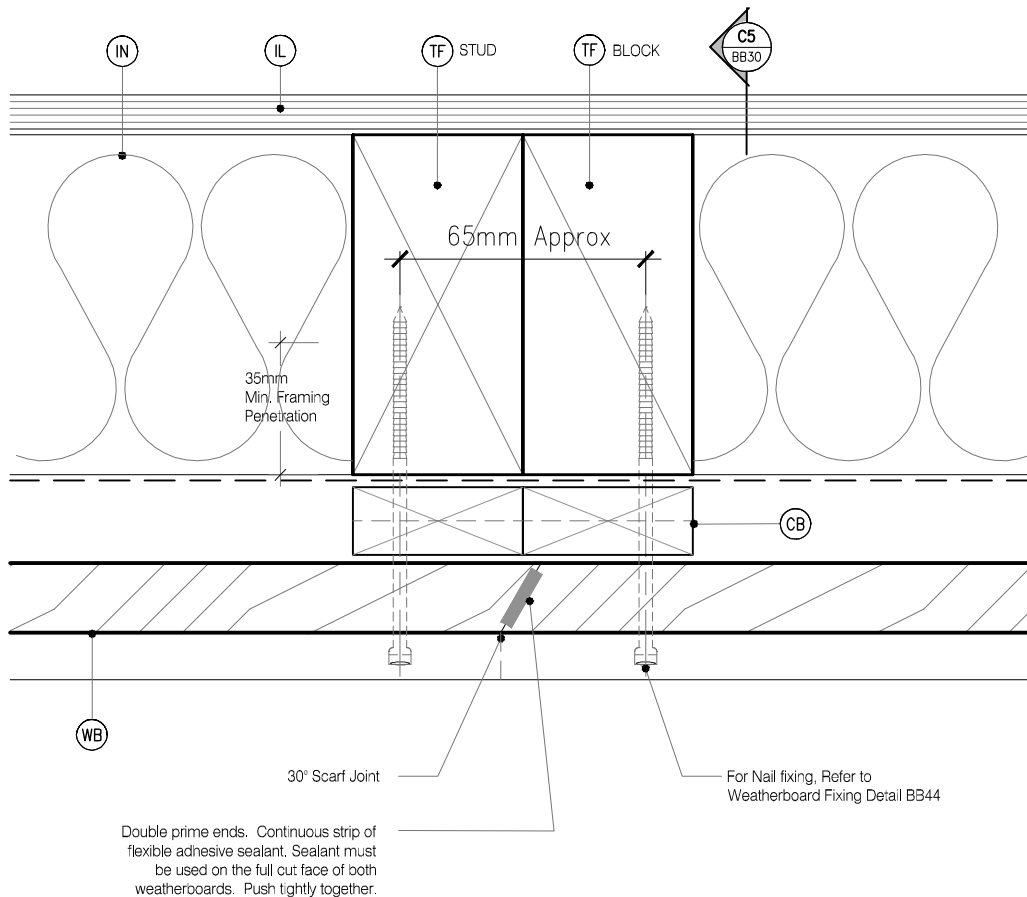
DRAWING No KLC CF20 BB44 REVISION 3

## LEGEND :

- (CB) CAVITY BATTEN: 45x20 KLC Generation II, SG6 Min MicroPro H3.2 FJ Cavity Batten. Forms a 20mm cavity
- (IL) INTERNAL LINING: Selected Internal Lining
- (BW) BUILDING WRAP: Flexible Wall Underlay, As per NZBC E2/AS1 - Table 23, In extra high wind zones, Rigid Underlay required ( 9.1.7.2 E2/AS1 )
- (CS) CORNER SOAKER: With 15mm Min cover over weatherboards

- (FT3) FLEXIBLE FLASHING TAPE: Flexible flashing tape lapped into corner
- (TF) TIMBER FRAME: H1.2 min treated timber framing
- (WB) WEATHER BOARD: KLC Generation II, MicroPro H3.2 Bevel Back Weatherboard. Profile to NZS 3617
- (IN) INSULATION: Selected Insulation

- (CF) CORNER FLASHING: Aluminium, PVC or Stainless Steel corner flashing. Refer NZBC E2/AS1 4.3 50x50 Hem or Hook to Flashing Edges 75x75 NO, Hem or Hook Required EXTRA HIGH WIND ZONE 100x100 Hem or Hook to Flashing Edges, Refer NZBC E2/AS1 4.5.1



When joining weatherboards a 30 ° Scarf joint is to be used. This joint must face away from the prevailing weather.  
Alternatively a corrosion resistant soaker can be used, refer to E2/AS1 - 9.4.4.2 & Soakers materials to 4.32 to Paragraph 4.3.8

## MicroPro® Wood Treatment Technology

- KLC use the MicroPro Micronized Copper Azole ( MCA ) based preservative system for their wood products. It accounts for 80% of wood treated in the US for domestic applications.
- Micronized Copper Azole ( MCA ) preservatives are EPA-approved for use in NZ and AUS to NZS3640:2003 and AS1604:12012
- MicroPro preservative is applied using high-pressure and vacuum-pressure in the impregnation process in KLC's modern, automated treatment facility.
- Cut End Treatment : All cut ends surfaces are to be double coated and sealed before fixing. With a alkylid ( oil based ) primer
- MicroPro preservative solution has benefits of reduced corrosivity. Use Hot Dip Galvanised Fasteners & Stainless Steel fasteners. MicroPro may be placed in direct contact with Aluminium Building products in interior applications, and above ground exterior applications that provide proper water drainage.
- MicroPro® is the first wood treatment process to be EPP ( Environmentally Preferable Product ) certified by Scientific Certification Systems based on a life cycle assessment.
- MicroPro® is environmentally sustainable, is low leaching, low VOC emissions and the award of the GREENGUARD Children and Schools' Certification from the Greenguard® Environmental Institute.
- MicroPro® Wood Treatment Technology has received a Global GreenTag GreenRate™ Level A this declaration is 'Fit-for-Purpose' and confirmed for Green Building compliance.
- MicroPro® Wood Treatment Technology has received GreenTag PhD™ proving claims that MicroPro® is safe for human health (and ecosystems).



**www.klc.co.nz**  
DETAILS MAY BE SUBJECT  
TO CHANGE WITHOUT NOTICE  
COPYRIGHT © "KLC LIMITED" ALL RIGHTS ASSERTED

TYPE **Generation II H3.2 Exterior Cladding Systems**  
**Bevel Back Weatherboard - Cavity Fix**

NAME **Scarf Joint - Horizontal**



DRAWING SCALE  
1:2 @ A4

ISSUE DATE  
26/03/2019

DRAWING No **KLC CF20 BB45** REVISION **1**