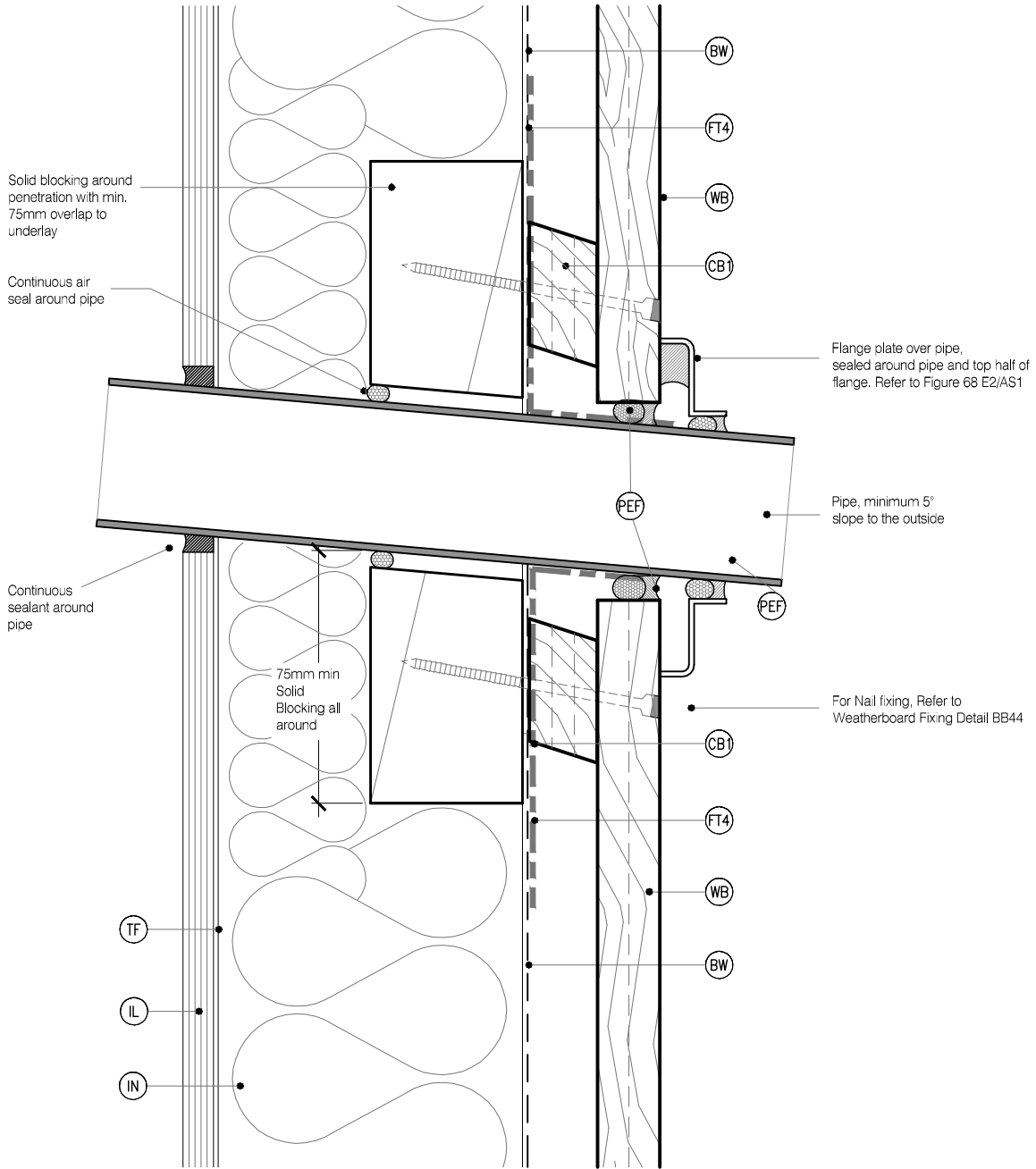


LEGEND :

- (PEF)** PEF ROD BACKING: Foam backing rod with sealant to perimeter that forms a waterproof air-seal. (Sealant 2:1 Ratio)
- (IL)** INTERNAL LINING: Selected Internal Lining
- (BW)** BUILDING WRAP: Flexible Wall Underlay, As per NZBC E2/AS1 - Table 23. In extra high wind zones, Rigid Underlay required (9.1.7.2 E2/AS1)
- (IN)** INSULATION: Selected Insulation
- (TF)** TIMBER FRAME: H:1.2 min treated timber framing
- (WB)** WEATHER BOARD: KLC Generation II, MicroPro H3.2 Vertical Shiplap WB. Profile to NZS 3617
- (FT3)** FLEXIBLE FLASHING TAPE: Flexible flashing tape lapped into corner, Refer NZBC E2/AS1 4.3.11 Flashing tape is recommended due to movement that may occur in corners but it is not required by E2/AS1
- (FT4)** FLEXIBLE FLASHING TAPE: Flexible flashing tape wrapped around pipe and over building wrap, Refer NZBC E2/AS1 4.3.11 & Figure 68
- (BC1)** BOXED CORNER COVER : 98x18 KLC Generation II, MicroPro H3.2 Cover Batten to boxed corners
- (BC2)** BOXED CORNER COVER: 85x18 KLC Generation II, MicroPro H3.2 Cover Batten to boxed corners
- (CB1)** CAVITY BATTEN, HORIZONTAL: 45x20 Castellated with a 18 degree bevelled slope. MicroPro H3.2 FJ. To form a 20mm cavity
- (CB2)** CAVITY BATTEN, VERTICAL: 45x20 KLC Generation II, MicroPro H3.2 FJ. To form a 20mm cavity
- (CF)** CORNER FLASHING: Aluminium, PVC or Stainless Steel corner flashing. Refer NZBC E2/AS1 4.3 50x50 Hem or Hook to Flashing Edges 75x75 NO. Hem or Hook Required EXTRA HIGH WIND ZONE 100x100 Hem or Hook to Flashing Edges, Refer NZBC E2/AS1 4.5.1



MicoPro® Wood Treatment Technology

1. KLC use the MicroPro Micronized Copper Azole (MCA) based preservative system for their wood products. It accounts for 80% of wood treated in the US for domestic applications.
2. Micronized Copper Azole (MCA) preservatives are EPA-approved for use in NZ and AUS to NZS3640:2003 and AS1604:12012
3. MicroPro preservative is applied using high-pressure and vacuum-pressure in the impregnation process in KLC's modern, automated treatment facility.
4. Cut End Treatment: All cut ends surfaces are to be double coated and sealed before fixing. With a alkyl (oil based) primer
5. MicroPro preservative solution has benefits of reduced corrosivity. Use Hot Dip Galvanised Fasteners & Stainless Steel fasteners. MicroPro may be placed in direct contact with Aluminium Building products in interior applications, and above ground exterior applications that provide proper water drainage.
6. MicroPro® is the first wood treatment process to be EPP (Environmentally Preferable Product) certified by Scientific Certification Systems based on a life cycle assessment.
7. MicroPro® is environmentally sustainable, is low leaching, low VOC emissions and the award of the GREENGUARD Children and Schools Certification from the Greenguard® Environmental Institute.
8. MicroPro® Wood Treatment Technology has received a Global GreenTag GreenRate™ Level A this declaration is 'Fit-for-Purpose' and confirmed for Green Building compliance.
9. MicroPro® Wood Treatment Technology has received GreenTag PhD™ proving claims that MicroPro® is safe for human health (and ecosystems).

CAD REF :KLC CF20 VS50-56 - GENERAL DETAILS 02.dwg
DATE :26/10/2018



TYPE **Generation II H3.2 Exterior Cladding Systems**
Vertical Shiplap WB - Cavity Fix

NAME **Pipe Penetration**

www.klc.co.nz
DETAILS MAY BE SUBJECT
TO CHANGE WITHOUT NOTICE
COPYRIGHT © KLC LIMITED* ALL RIGHTS ASSERTED



DRAWING SCALE 1:2 @ A4	ISSUE DATE 26/10/2018
DRAWING No KLC CF20 VS54	
REVISION	